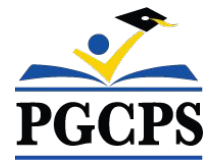




PGCPS . PARTICIPAR. DISEÑAR. CONSTRUIR. COMUNICAR. PGCPS



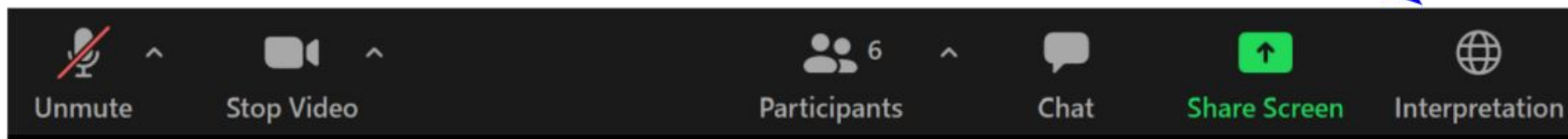
# ESCUELA PRIMARIA SPRINGHILL LAKE

REUNIÓN COMUNITARIA #1 | 7 DE MAYO DE 2023, 7:30 P. M.



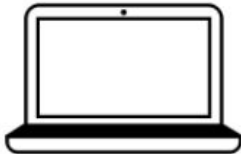
## SERVICIOS DE INTERPRETACIÓN *INTERPRETING SERVICES*

La interpretación simultánea  
está disponible en español.  
*Simultaneous interpretation is  
available in Spanish.*



# SERVICIOS DE INTERPRETACIÓN

## *INTERPRETING SERVICES*



**On a computer**-- At the bottom of the screen will be an interpretation globe. Click that globe and then select *Spanish*.

**En una computadora**-- En la parte baja de la pantalla habrá un globo de interpretación. Haga clic en ese globo y seleccione "Spanish."

---



**On a mobile device**-- At the bottom of the screen, tap the ellipses icon on the bottom right (...).

- Tap *Language Interpretation*.
- Tap *Spanish*.

**En un dispositivo móvil**-- En la parte baja de la pantalla, toca el icono de elipses en la parte baja derecha (...).

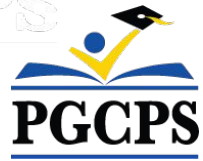
- Toque *Language Interpretation*.
- Toque *Spanish*.



## Valoramos su opinión.

- Por favor, escriba sus preguntas e inquietudes en el área de preguntas y respuestas de Zoom.
- Las preguntas y respuestas de este foro comunitario se publicarán en [pgcpsblueprintschools.com](http://pgcpsblueprintschools.com).





## **Nuestro compromiso**

PGCPS está comprometido a trabajar rápidamente para ofrecer entornos de aprendizaje seguros, de última generación y sostenibles para nuestros estudiantes, maestros y comunidades.



## Agenda

- Presentaciones del equipo
- Diseño
- Cronograma y logística de la construcción
- Preguntas y respuestas



# Presentaciones del equipo

## PGCPS

- **Dra. Niki Newman-Brown**, *directora de instrucción*
- **Dra. Kasandra Lassiter**, *superintendente adjunta*
- **Trena Wilson**, *directora*

## Departamento de los Programas de Inversión de Capitales de PGCPS

- **Shawn Matlock**, *director, Oficina de Planificación y Desarrollo de Infraestructura Alternativa*



# Presentaciones del equipo



**Jeff Barr**  
PLENARY  
Registered Representative

**Hafeez Habib**  
PLENARY  
Equity Members' Lead Project Manager

**Brett Sullivan**  
PLENARY  
Associate

**Adam Dunn**  
PLENARY  
Assistant Project Manager

**Jeremy Ebie**  
PHOENIX  
Equity Members' Project Manager

**Rob Summers**  
PHOENIX  
Operating Partner

**Peter Bullen**  
ELLISDON CAPITAL  
Senior Director



**Bill Beschoner**  
MCN  
Construction Process Executive in Charge

**Bassem Boustany**  
MCN  
Principal

**Yonas Menji**  
MCN  
Lead Construction Manager

**Rick Munford**  
MCN  
Preconstruction Director



**Sean O'Donnell**  
PERKINS EASTMAN  
Design Process Executive In Charge & Lead Architect

**Omar Calderon**  
PERKINS EASTMAN  
Design Principal



**Pete Cambell**  
ELLISDON FS  
Director, P3 Pursuits

**Brandon Kelley**  
USF  
Vice President

**Johnathan Bolden**  
RSC  
President



**Sharon Bradley**  
BSD  
Directora

**Iván Zapata**  
BSD  
Director de Ingeniería Civil

**Matthew Cartledge**  
BSD  
Administrador de proyectos/ Arquitecto paisajista



**Jam Kendrick**  
TB&A  
Administrador de proyectos





# Plano propuesto para el sitio



**MATERIALS LEGEND**

- PROPERTY LINE
- CONCRETE
- ASPHALT
- RUBBER PLAY SURFACING
- LAWN
- PLANTING AREA
- EXISTING CANOPY TO REMAIN
- BIORETENTION; REFER CIVIL FOR DEPTH AND SPECIFICATIONS

\* CONTRACTOR TO VERIFY THAT ALL QUANTITIES LISTED MATCH THE PLAN. NOTIFY LANDSCAPE ARCHITECT OF DISCREPANCIES.



Nota: El diseño está sujeto a cambios







# Selección de cultivos

## SPRING



WHITE AZALEA  
*Rhododendron x*



HINO CRIMSON AZALEA  
*Rhododendron x*



DAFFODIL  
*Narcissus x*



DRIFT ROSE  
*Rosa hybrida*

## SUMMER



BUTTERFLY MILKWEED  
*Asclepias tuberosa*



BLACK-EYED SUSAN  
*Rudbeckia fulgida*



PENNSYLVANIA SEDGE  
*Carex pennsylvanica*



SNIPPET WIEGELA  
*Wiegela florida*



GOLDEN RAGWORT  
*Packera aurea*



FOAM FLOWER  
*Tiarella cordifolia*



GIANT ALLIUM  
*Allium Giganteum*



ENGLISH LAUREL  
*Prunus laurocerasus*



CORAL BELLS  
*Heuchera micrantha*



FERN MIX  
*Multiple Species*



KODIAK DIERVILLA  
*Diervilla x*



BLUE CASCADE DISTYLIUM  
*Distylium x*

## AUTUMN



GROW LOW SUMAC  
*Rhus aromatica*



ARKANSAS BLUESTAR  
*Amsonia hubrichtii*



FEATHER REED GRASS  
*Calamagrostis x acutiflora*

## WINTER



PLUM YEWE  
*Cephalotaxus harringtonia*



WINTERBERRY  
*ilex verticillata*



GREY OWL CEDAR  
*Juniperus virginiana*



RED TWIG DOGWOOD  
*Cornus sericea*



LITTLE BLUESTEM  
*Schizachyrium scoparium*



SWEETPIRE  
*Itea virginica*



SARGENT JUNIPER  
*Juniperus chinensis sargentii*



FOTHERGILLA  
*Fothergilla gardenii*



FOUNTAIN GRASS  
*Pennisetum alopecuroides*

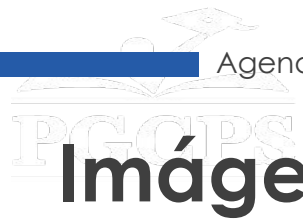


WINTER JASMIN  
*Jasmin nudiflorum*



DRAGON LADY HOLLY  
*Ilex x aquipernyi*





# Imágenes precedentes





# Plano de la distribución preliminar

- Salones de clase de primera infancia en la planta.
- Entrada principal
- Centro de la escuela

**DEPARTMENT**

ACADEMIC - CORE
ACADEMIC - EXTENDED
ADMINISTRATION
BUILDING SERVICES
BUILDING SUPPORT
CIRCULATION
DINING
MEDIA CENTER
PERF ARTS
PHYS ED
SPEC ED
SUPPORT
VISUAL ARTS



Plano de la primera planta

Nota: El diseño está sujeto a cambios



# Plano de la distribución preliminar

- Salones de clase de los grados superiores

**DEPARTMENT**

	ACADEMIC - CORE
	ACADEMIC - EXTENDED
	ADMINISTRATION
	BUILDING SERVICES
	BUILDING SUPPORT
	CIRCULATION
	DINING
	MEDIA CENTER
	PERF. ARTS
	PHYS. ED.
	SPEC. ED.
	SUPPORT
	VISUAL ARTS



Plano de la segunda planta

Nota: El diseño está sujeto a cambios





# Elevaciones interiores y renderizados







# Elevaciones y renderizados



Nota: El diseño está sujeto a cambios





# Elevaciones y renderizados



*Nóta:* El diseño está sujeto a cambios



# Descripción general del cronograma







# Plano logístico

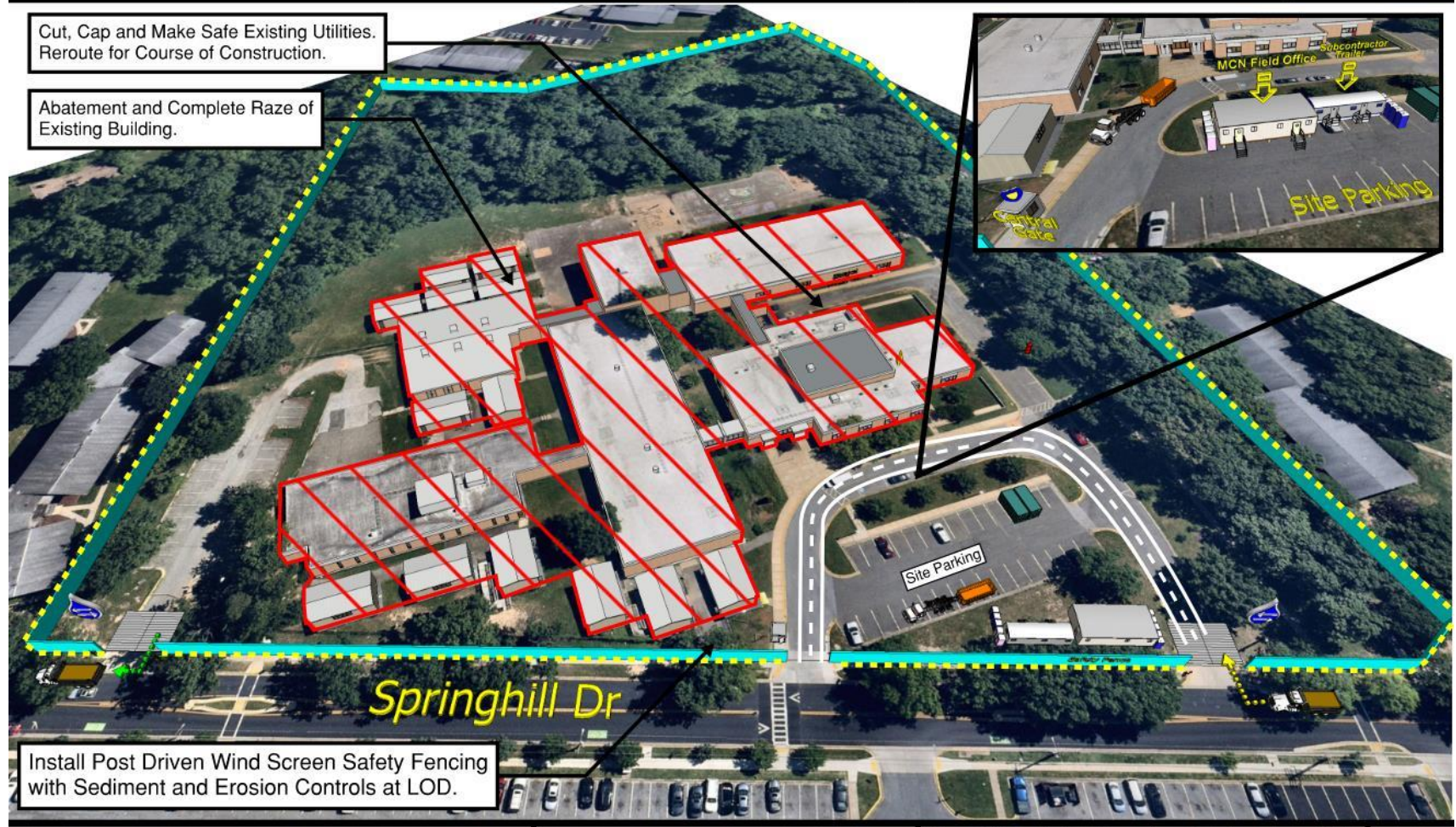
## Springhill Lake ES: New Building Logistic & Phasing Plan

### Sequence 2 - Demolition & Rough Grading



August 2026 - February 2027

Page 1 of 3



Sequence 1 - Site Controls & LOD (Not Shown)

### Sequence 2 - Demolition & Rough Grading

Sequence 3 - Superstructure & Facade

Sequence 4 - Final Site & Completion

-  : Dedicated Flaggers
-  : Vibration & Settlement Monitors

Prior to initiating the demolition and rough grading process, MCN will take necessary steps to gain control over the site. This will involve the installation of safety fencing and the implementation of sediment and erosion control systems. The existing utilities will be meticulously identified, cut, capped, and secured to ensure safety. Subsequently, these utilities will be rerouted and repurposed as temporary resources to facilitate and support the ongoing construction activities.



NTS





# Plano logístico

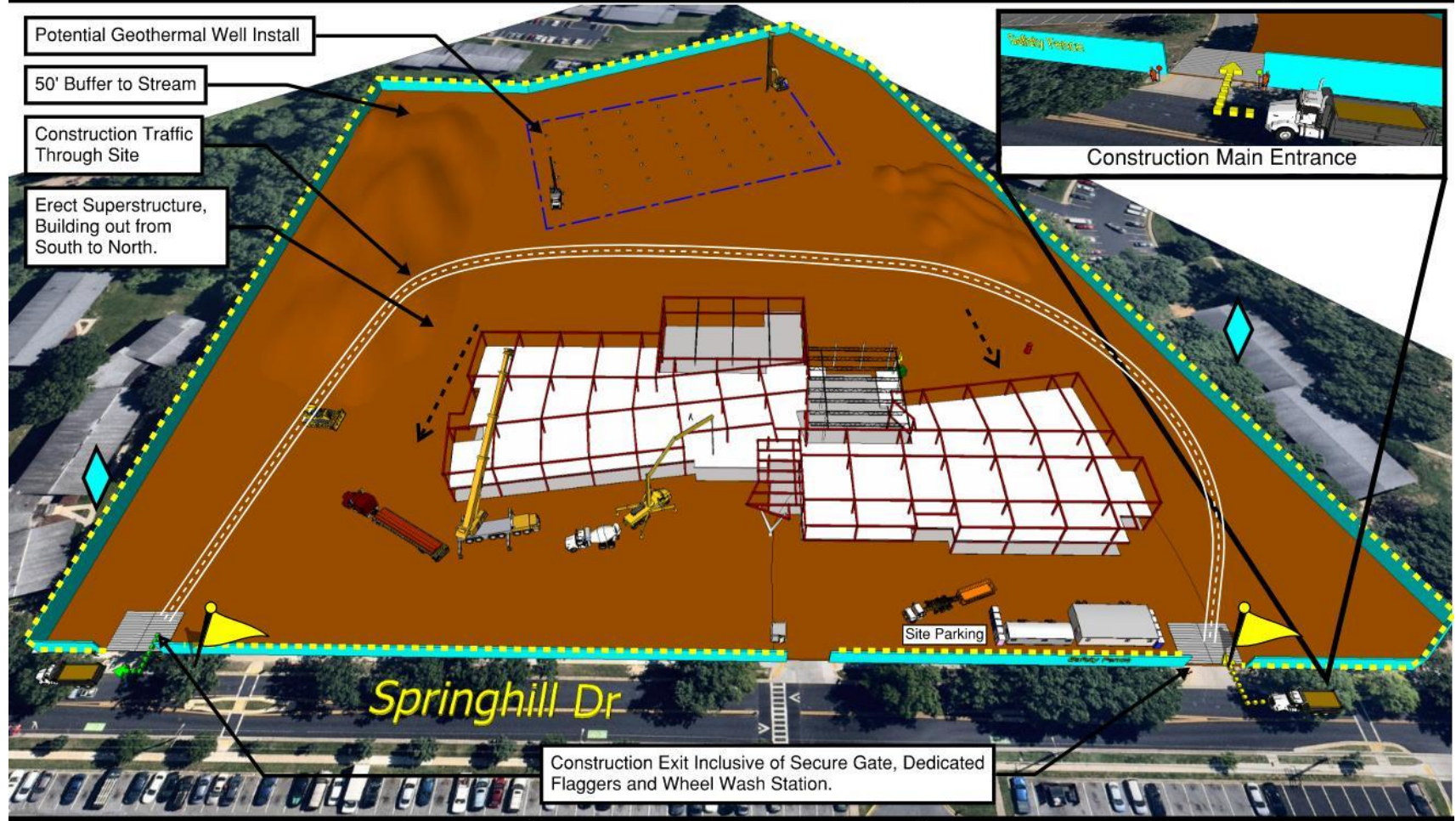
## Springhill Lake ES: New Building Logistic & Phasing Plan

### Sequence 3 - Superstructure & Facade



March 2027 - August 2027

Page 2 of 3



Sequence 1 - Site Controls & LOD (Not Shown)

Sequence 2 - Demolition & Rough Grading

**Sequence 3 - Superstructure & Facade**

Sequence 4 - Final Site & Completion

: Dedicated Flaggers

: Vibration & Settlement Monitors

The construction and installation of the new school will be conducted in an unobstructed area within the existing site. Special attention will be given to ensure that the construction activities, including the potential geothermal well field, are situated at a significant distance from neighboring properties. This precaution is taken to prevent any excessive vibration and noise disturbances that could impact the surrounding area.



NTS





# Plano logístico

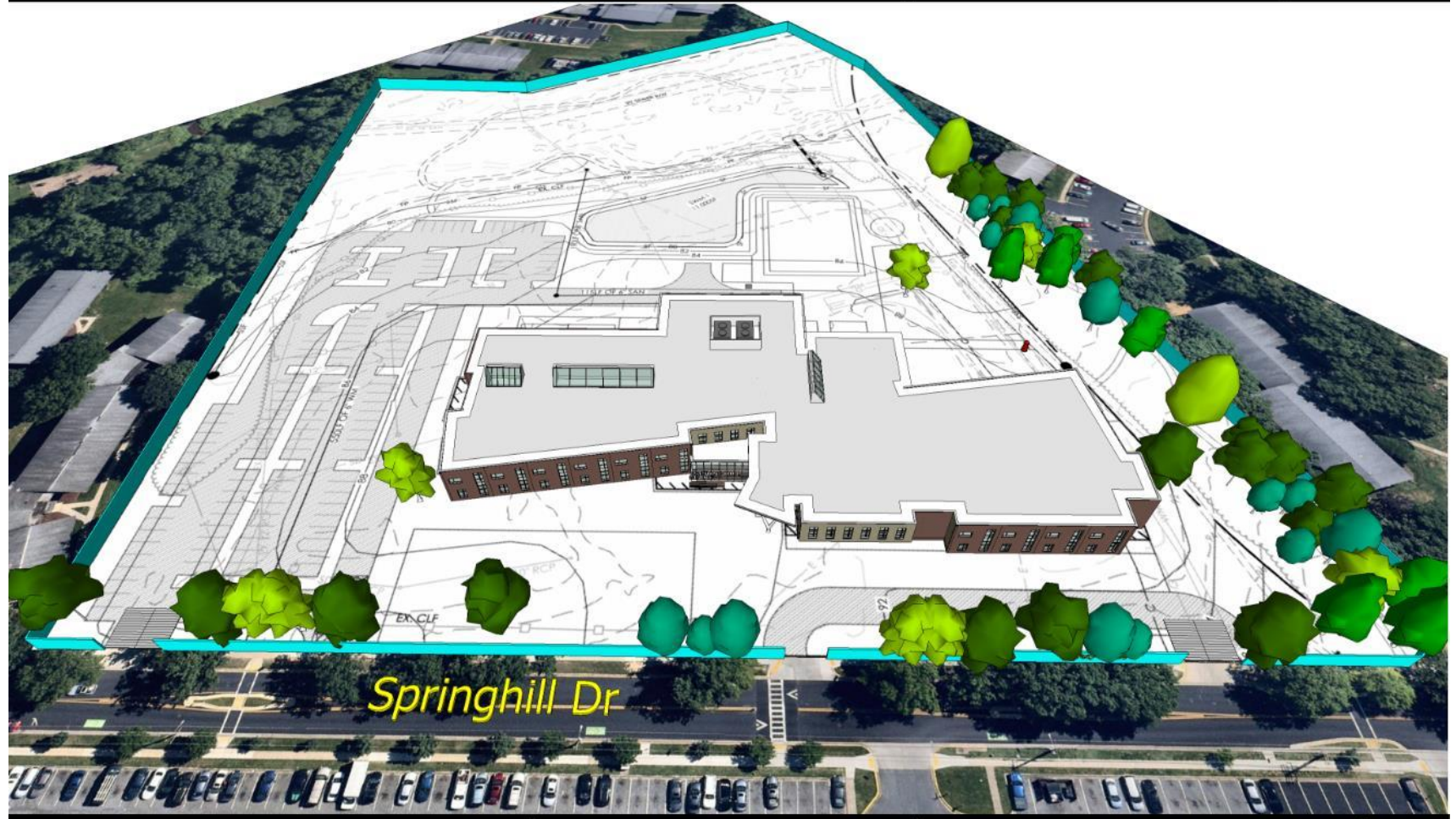
## Springhill Lake ES: New Building Logistic & Phasing Plan

### Sequence 4 - Final Site & Completion



February 2028 - June 2028

Page 3 of 3



Sequence 1 - Site Controls & LOD (Not Shown)

Sequence 2 - Demolition & Rough Grading

Sequence 3 - Superstructure & Facade

**Sequence 4 - Final Site & Completion**



: Dedicated Flaggers



: Vibration & Settlement Monitors

Upon the completion of the superstructure, the interior construction will begin simultaneously with the site work. The aim is to synchronize and complete both the site work and the final construction of the interior building at the same time.



# ¿Preguntas?