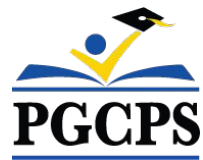




PGCPS . PARTICIPAR. DISEÑAR. CONSTRUIR. COMUNICAR. PGCPS



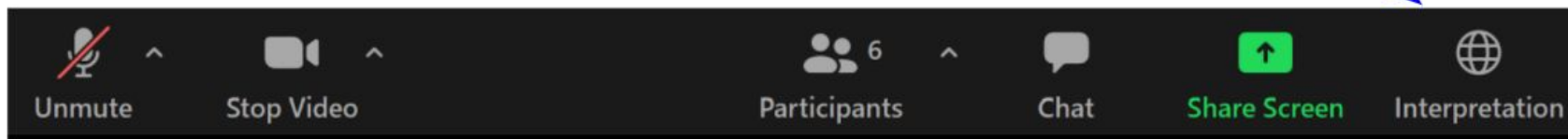
# ESCUELA BRANDYWINE DE KÍNDER A OCTAVO GRADO

REUNIÓN COMUNITARIA #1 | 7 DE MAYO DE 2023, 6:00 P. M.



## SERVICIOS DE INTERPRETACIÓN *INTERPRETING SERVICES*

La interpretación simultánea  
está disponible en español.  
*Simultaneous interpretation is  
available in Spanish.*



# SERVICIOS DE INTERPRETACIÓN

## *INTERPRETING SERVICES*



**On a computer**-- At the bottom of the screen will be an interpretation globe. Click that globe and then select *Spanish*.

**En una computadora**-- En la parte baja de la pantalla habrá un globo de interpretación. Haga clic en ese globo y seleccione "Spanish."

---



**On a mobile device**-- At the bottom of the screen, tap the ellipses icon on the bottom right (...).

- Tap *Language Interpretation*.
- Tap *Spanish*.

**En un dispositivo móvil**-- En la parte baja de la pantalla, toca el icono de elipses en la parte baja derecha (...).

- Toque *Language Interpretation*.
- Toque *Spanish*.



## Valoramos su opinión.

- Por favor, escriba sus preguntas e inquietudes en el área de preguntas y respuestas de Zoom.
- Las preguntas y respuestas de este foro comunitario se publicarán en [pgcpsblueprintschools.com](http://pgcpsblueprintschools.com).



## **Nuestro compromiso**

PGCPS está comprometido a trabajar rápidamente para ofrecer entornos de aprendizaje seguros, de última generación y sostenibles para nuestros estudiantes, maestros y comunidades.



## Agenda

- Presentaciones del equipo
- Diseño
- Cronograma y logística de la construcción
- Preguntas y respuestas



# Presentaciones del equipo

## PGCPS

- **Dra. Kristil Fossett**, *directora de instrucción*
- **Darryl Evans**, *director de instrucción*
- **Unique Hunter-Blake**, *directora, Escuela Primaria Brandywine*
- **Terrill Hall**, *director, Escuela Intermedia Gwynn Park*
- **Antron Huff**, *director, Escuela Primaria Baden*

## Departamento de los Programas de Inversión de Capital de PGCPS

- **Shawn Matlock**, *director, Oficina de Planificación y Desarrollo de Infraestructura Alternativa*



# Presentaciones del equipo



**Jeff Barr**  
PLENARY  
Registered Representative

**Hafeez Habib**  
PLENARY  
Equity Members' Lead Project Manager

**Brett Sullivan**  
PLENARY  
Associate

**Adam Dunn**  
PLENARY  
Assistant Project Manager

**Jeremy Ebie**  
PHOENIX  
Equity Members' Project Manager

**Rob Summers**  
PHOENIX  
Operating Partner

**Peter Bullen**  
ELLISDON CAPITAL  
Senior Director



**Bill Beschorner**  
MCN  
Construction Process Executive in Charge

**Bassem Boustany**  
MCN  
Principal

**Yonas Menji**  
MCN  
Lead Construction Manager

**Rick Munford**  
MCN  
Preconstruction Director



**Sean O'Donnell**  
PERKINS EASTMAN  
Design Process Executive In Charge & Lead Architect

**Omar Calderon**  
PERKINS EASTMAN  
Design Principal



**Pete Cambell**  
ELLISDON FS  
Director, P3 Pursuits

**Brandon Kelley**  
USF  
Vice President

**Johnathan Bolden**  
RSC  
President



**Mamo Assefa**  
Delon Hampton  
Presidente

**James Gittens**  
Delon Hampton  
Vicepresidente



**Connie Fan**  
LSG  
Directora

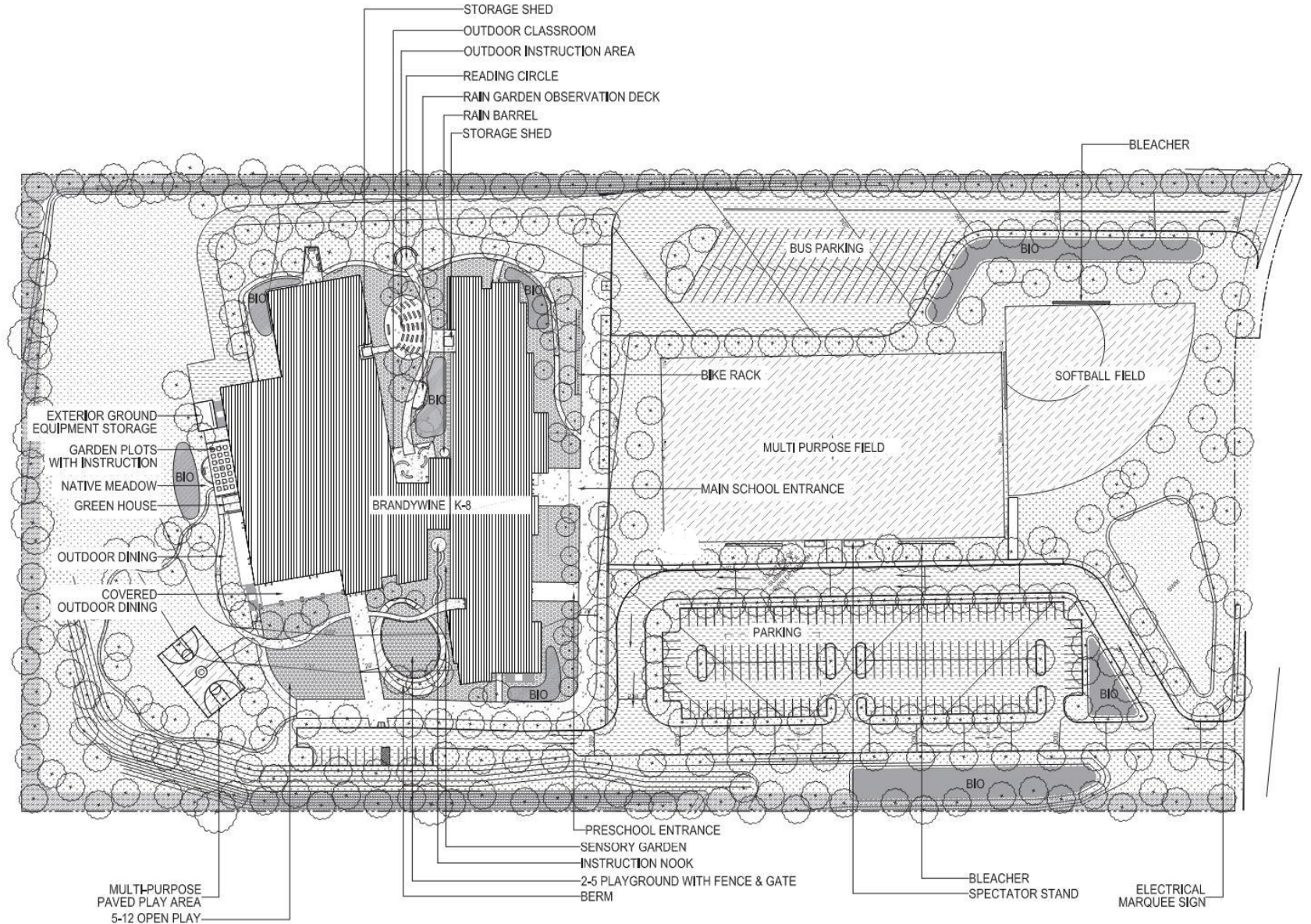


**Jam Kendrick**  
TB&A  
Administrador de proyectos





# Plano del sitio



Nota: El diseño está sujeto a cambios

1 LANDSCAPE PLAN



LEGEND			
	VEHICULAR PARKING		LAWN
	PEDESTRIAN CONCRETE PAVING		PLA (PLANTING AREA)
	ACRYLIC SPORT COURT		20' WPC BUFFER
	BIO (BIORETENTION)		EWF & PIP



# Imágenes precedentes



STRUCTURED PLAYGROUND FOR PRE-K



STRUCTURED PLAYGROUND FOR PRIMARY & INTERMEDIATE



ENVIRONMENTAL PROGRAM & SENSORY PLAY GARDENS



OUTDOOR LEARNING ROOMS



EDUCATIONAL GARDEN & OUTDOOR DINING

Nota: El diseño está sujeto a cambios



# Plano de la distribución preliminar

- Salones de clase de primera infancia en la planta
- Entrada principal
- Centro de la escuela

**DEPARTMENT LEGEND**

	ACADEMIC - CORE
	ACADEMIC - EXTENDED
	ADMINISTRATION
	BUILDING SERVICES
	CIRCULATION
	DINING
	LIBRARY
	PERFORMING ARTS
	PHYS ED
	SPECIAL EDUCATION (SEAD)
	SUPPORT



Plano de la primera planta

Nota: El diseño está sujeto a cambios



# Plano de la distribución preliminar

- Áreas de escuelas primarias e intermedias
- Deportes

**DEPARTMENT LEGEND**

ACADEMIC - CORE
ACADEMIC - EXTENDED
ADMINISTRATION
BUILDING SERVICES
CIRCULATION
DINING
LIBRARY
PERFORMING ARTS
PHYS ED
SPECIAL EDUCATION (SEAD)
SUPPORT



Plano de la segunda plan...



# Plano de la distribución preliminar

- Salones de clase de los grados superiores
- Áreas de escuelas primarias e intermedias

## DEPARTMENT LEGEND

ACADEMIC - CORE
ACADEMIC - EXTENDED
ADMINISTRATION
BUILDING SERVICES
CIRCULATION
DINING
LIBRARY
PERFORMING ARTS
PHYS ED
SPECIAL EDUCATION (SEAD)
SUPPORT



Plano de la tercera planta



# Elevaciones interiores y renderizados





# Elevaciones y renderizados



Nota: El diseño está sujeto a cambios



# Elevaciones y renderizados



Nota: El diseño está sujeto a cambios





# Elevaciones y renderizados



Nota: El diseño está sujeto a cambios.

# Descripción general del cronograma

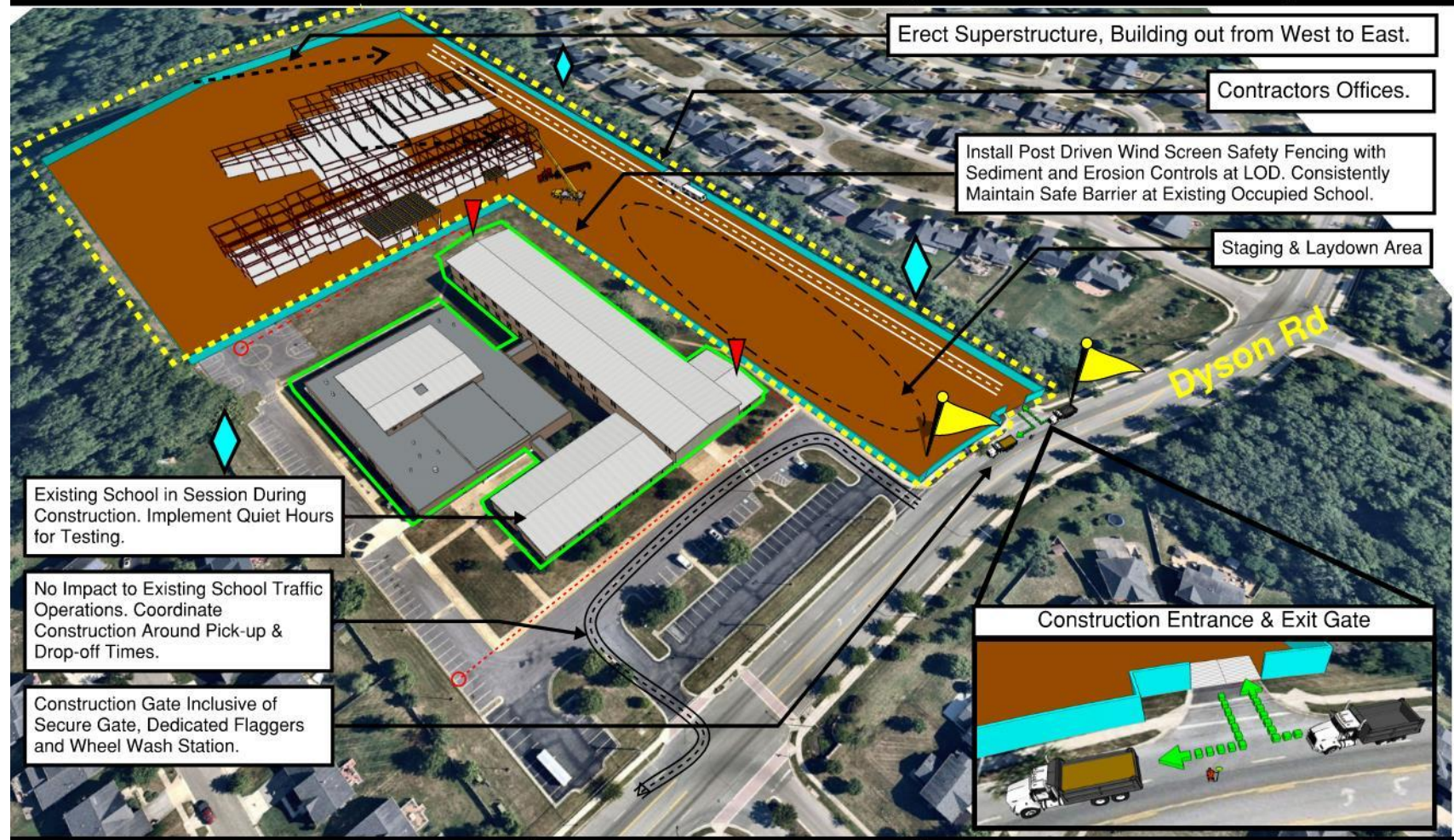




# Plano logístico

## Brandywine K-8: New Building Logistic & Phasing Plan

### Sequence 1 - New Building Construction



### Sequence 1 - New Building Construction

Sequence 2 - Occupy New Demo of Existing

Sequence 3 - Final Site & Completion

- : Dedicated Flaggers
- : Vibration & Settlement Mointors
- : School Emergency Egress

During the initial phase of this project, new construction will start on the north side of the currently occupied campus. Given MCN's extensive experience working on occupied campuses, special attention will be given to minimize noisy activities during testing and ensure that they do not disrupt the drop off and pick up times for the children.

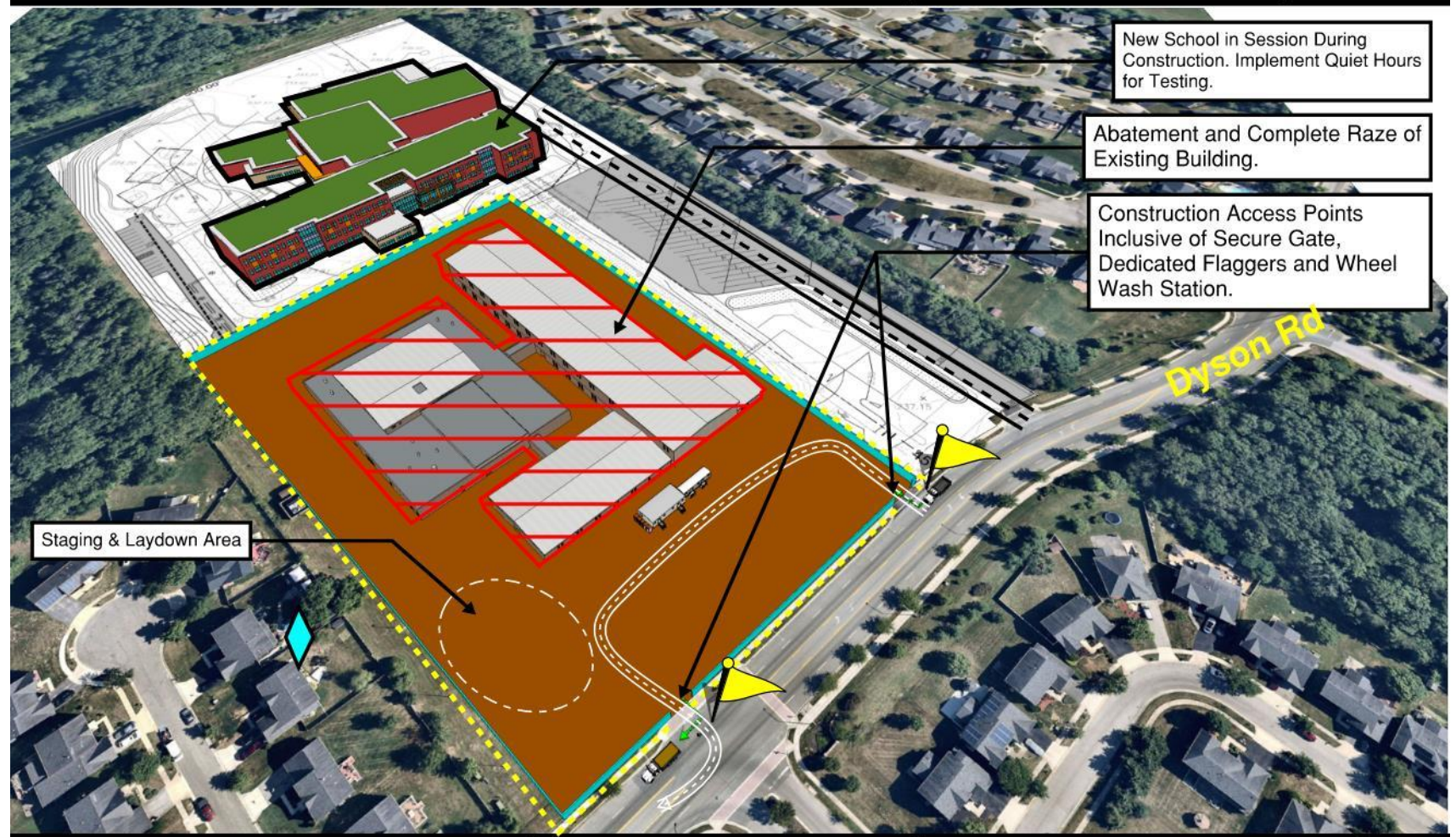




# Plano logístico

## Brandywine K-8: New Building Logistic & Phasing Plan

### Sequence 2 - Occupy New Demo of Existing



Sequence 1 - New Building Construction

**Sequence 2 - Occupy New Demo of Existing**

Sequence 3 - Final Site & Completion

-  : Dedicated Flaggers
-  : Vibration & Settlement Mointors
-  : School Emergency Egress

Once the new school is completed, the children will relocate to the new building, and MCN will shift the construction activities to the old existing school building. This phase will involve the demolition of the existing school and the installation of athletic fields and a parking lot.

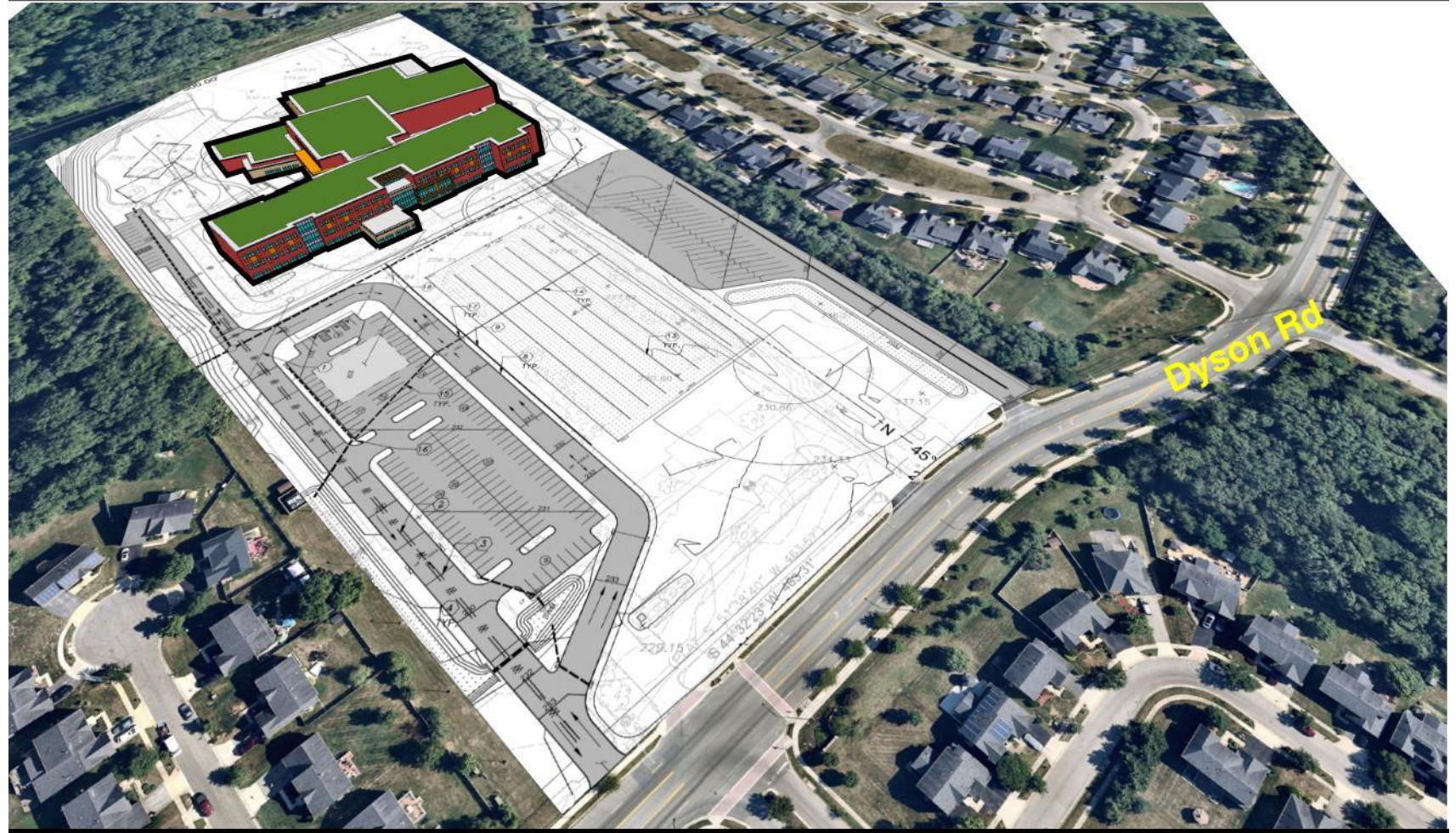




# Plano logístico

## Brandywine K-8: New Building Logistic & Phasing Plan

### Sequence 3 - Final Site & Completion



Sequence 1 - New Building Construction  
 Sequence 2 - Occupy New Demo of Existing  
**Sequence 3 - Final Site & Completion**

-  : Dedicated Flaggers
-  : Vibration & Settlement Mointors
-  : School Emergency Egress

Upon the completion of the final site and all construction activities, the entire project will be handed over to the owner for full use. At this stage, the owner will have full access and control over the site and all its components.



# Preguntas