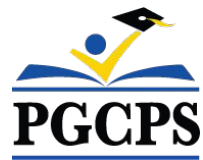




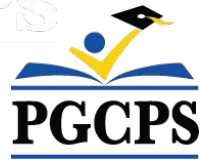
PGCPS . **ENGAGE . DESIGN . BUILD . COMMUNICATE** . PGCPS



# TEMPLETON ELEMENTARY SCHOOL

COMMUNITY MEETING #2 | FEBRUARY 13, 2023, 6:30 PM





## **Our Commitment**

PGCPS is committed to moving swiftly to deliver safe, state-of-the-art, and sustainable learning environments for our students, teachers, and communities.



## Agenda

- Team Introductions
- Updated Design
- Construction Schedule and Logistics
- Q&A



# Team Introductions

## PGCPS

- **Jason Washington**, *Associate Superintendent of Supporting Services*

## Blueprint Schools

- **Shawn Matlock**, *Director*



# Team Introductions



<b>Jeff Barr</b> PLENARY Registered Representative	<b>Hafeez Habib</b> PLENARY Equity Members' Lead Project Manager	<b>Brett Sullivan</b> PLENARY Associate	<b>Adam Dunn</b> PLENARY Assistant Project Manager	<b>Jeremy Ebie</b> PHOENIX Equity Members' Project Manager	<b>Rob Summers</b> PHOENIX Operating Partner	<b>Peter Bullen</b> ELLISDON CAPITAL Senior Director
--	--	---	--	--	--	--



<b>Bill Beschorner</b> MCN Construction Process Executive in Charge	<b>Bassem Boustany</b> MCN Principal	<b>Yonas Menji</b> MCN Lead Construction Manager	<b>Rick Munford</b> MCN Preconstruction Director
---	--	--	--



<b>Sean O'Donnell</b> PERKINS EASTMAN Design Process Executive In Charge & Lead Architect	<b>Omar Calderon</b> PERKINS EASTMAN Design Principal
---	---



<b>Pete Cambell</b> ELLISDON FS Director, P3 Pursuits	<b>Brandon Kelley</b> USF Vice President	<b>Johnathan Bolden</b> RSC President
---	--	---



# Updated Site Plan

- Bus drop-off
- Vehicular parking
- Outdoor classroom and play areas



LEGEND	
①	Entry Plaza
②	Parking Lot
③	Bus Loop
④	Drop-Off
⑤	Play Lawn
⑥	Outdoor Classroom
⑦	Garden Plots
⑧	Pre-K/K Playground
⑨	Primary Playground
⑩	Paved Play
⑪	Monument Sign
⑫	Service Area
⑬	Undeveloped Easement for 57th Avenue
⑭	Temple Knolls Neighborhood Park (MNCPPC)
⑮	Proposed Hamlet Woods Subdivision



# Seasonal Planting Selection

## SPRING



WHITE AZALEA  
*Rhododendron x*



HINO CRIMSON AZALEA  
*Rhododendron x*



DAFFODIL  
*Narcissus x*



DRIFT ROSE  
*Rosa hybrida*

## SUMMER



BUTTERFLY MILKWEED  
*Asclepias tuberosa*



BLACK-EYED SUSAN  
*Rudbeckia fulgida*



PENNSYLVANIA SEDGE  
*Carex pennsylvanica*



SNIPPET WIEGELA  
*Wiegela florida*



GOLDEN RAGWORT  
*Packera aurea*



FOAM FLOWER  
*Tiarella cordifolia*



GIANT ALLIUM  
*Allium Giganteum*



ENGLISH LAUREL  
*Prunus laurocerasus*



CORAL BELLS  
*Heuchera micrantha*



FERN MIX  
*Multiple Species*



KODIAK DIERVILLA  
*Diervilla x*



BLUE CASCADE DISTYLIUM  
*Distylium x*

## AUTUMN



GROW LOW SUMAC  
*Rhus aromatica*



ARKANSAS BLUESTAR  
*Amsonia hubrichtii*



FEATHER REED GRASS  
*Calamagrostis x acutiflora*

## WINTER



PLUM YEWE  
*Cephalotaxus harringtonia*



WINTERBERRY  
*Ilex verticillata*



GREY OWL CEDAR  
*Juniperus virginiana*



RED TWIG DOGWOOD  
*Cornus sericea*



LITTLE BLUESTEM  
*Schizachyrium scoparium*



SWEETPIRE  
*Itea virginica*



SARGENT JUNIPER  
*Juniperus chinensis sargentii*



FOTHERGILLA  
*Fothergilla gardenii*



FOUNTAIN GRASS  
*Pennisetum alopecuroides*



WINTER JASMIN  
*Jasmin nudiflorum*



DRAGON LADY HOLLY  
*Ilex x aquipernyi*



# Precedent Images







# Preliminary Layout Plan

- Early childhood classrooms at grade.
- Main entrance
- Heart of the School



First Level Plan



# Preliminary Layout Plan

- Early childhood classrooms at grade.



Lower Level Plan



# Preliminary Layout Plan

- Upper grade classrooms



Second Level Plan



# Interior Elevations and Renderings





# Updated Elevations and Renderings



Note: Design is subject to change



# Updated Elevations and Renderings



Note: Design is subject to change



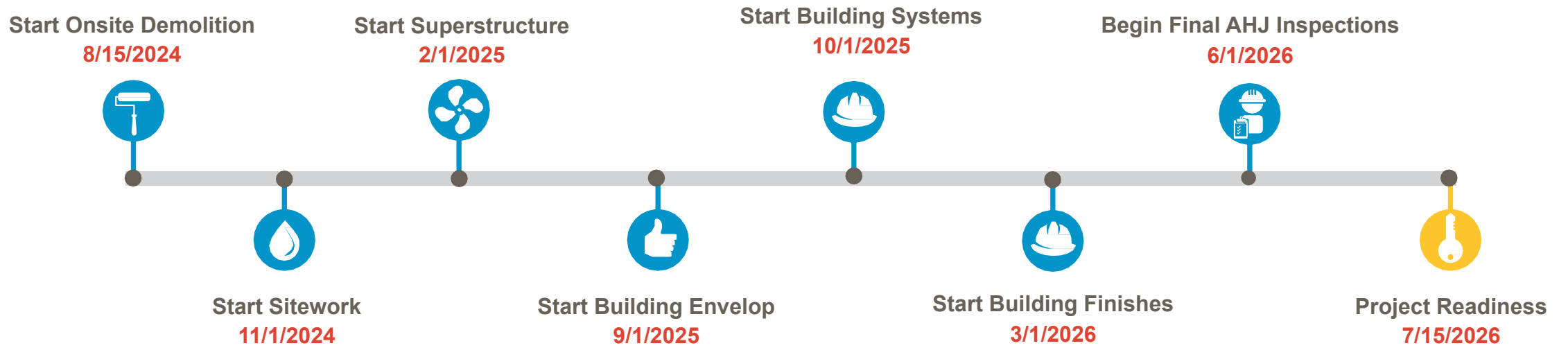
# Updated Elevations and Renderings



Note: Design is subject to change



# Schedule Overview

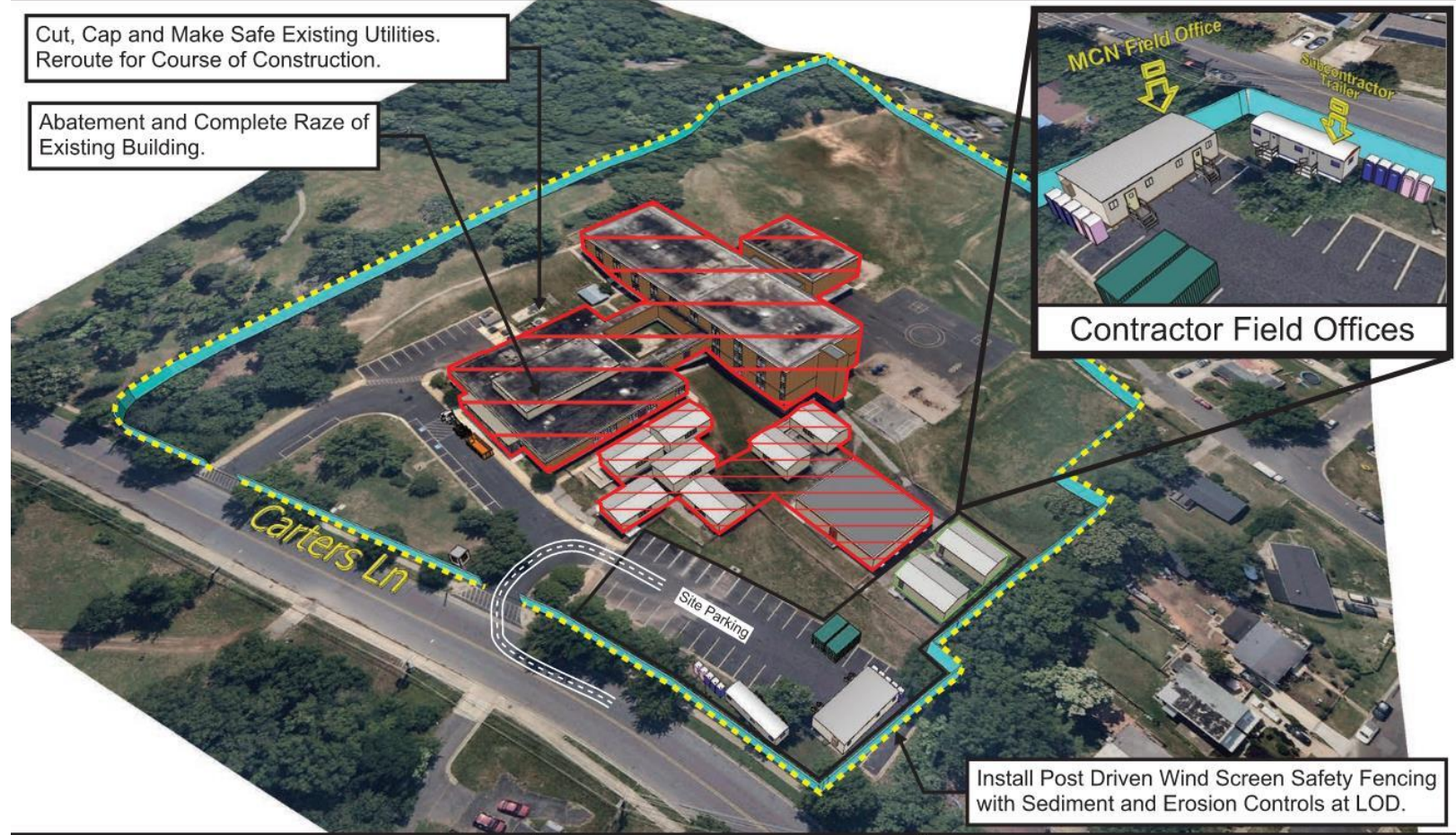




# Logistics Plan

## Templeton: New Building Logistic & Phasing Plan

### Sequence 2 - Demolition & Rough Grading



Sequence 1 - Site Controls & LOD (Not Shown)  
**Sequence 2 - Demolition & Rough Grading**  
 Sequence 3 - Superstructure & Facade

-  : Dedicated Flaggers
-  : Vibration & Settlement Monitors

Before the demolition and rough grading process, MCN will establish control over the site by implementing safety fencing and sediment and erosion control systems. Existing utilities will be carefully identified, cut, capped, and made safe. They will then be rerouted and re-purposed as temporary utilities to support the construction activities.

TECHNICAL



NTS

# Logistics Plan

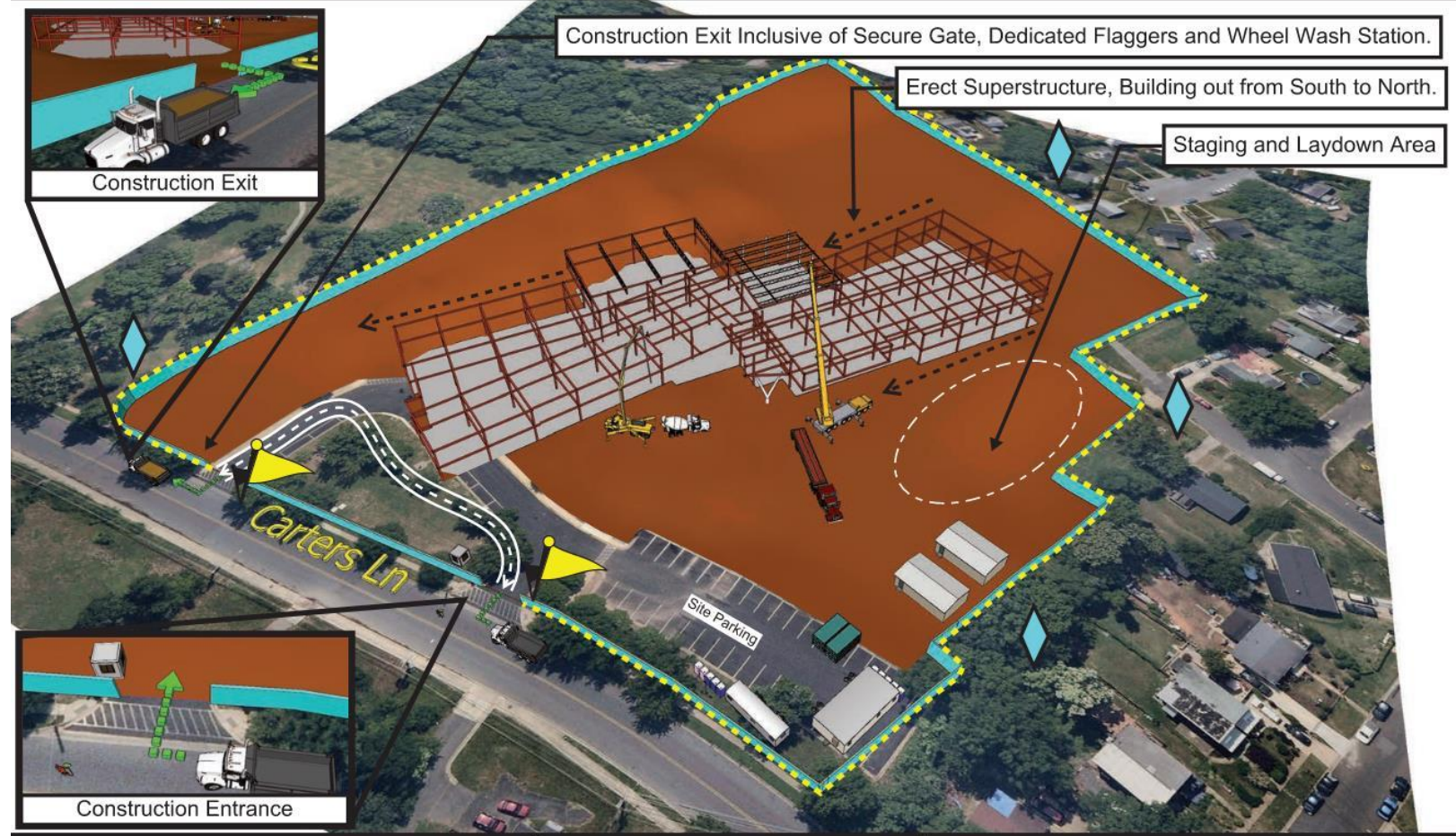
## Templeton: New Building Logistic & Phasing Plan

### Sequence 3 - Superstructure & Facade



February 2025 - July 2025

Page 2 of 3



Sequence 1 - Site Controls & LOD (Not Shown)  
 Sequence 2 - Demolition & Rough Grading  
**Sequence 3 - Superstructure & Facade**

-  : Dedicated Flaggers
-  : Vibration & Settlement Monitors

The construction of the new school will take place in a location within the existing site that is free from any obstructions. It is expected that the construction activities will be situated at a sufficient distance from neighboring properties to avoid excessive vibration and noise disturbances.

TECHNICAL APPENDIX A-304



NTS



# Questions