



Suitland High School



Design and Construction Town Hall Tuesday, April 5, 2022 6:00pm-7:00pm



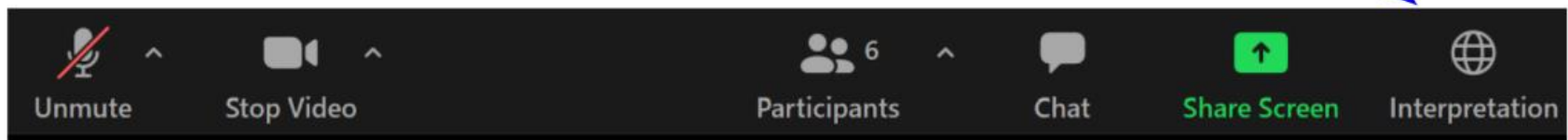
Karen Summerville
PGCPS, Capital Programs
Communications and Public
Engagement Advisor
SUITLAND HIGH SCHOOL
ALUM

Your participation matters.

- Zoom meeting format
- Language interpretation
- Questions and comments

SERVICIOS DE INTERPRETACIÓN *INTERPRETING SERVICES*

La interpretación simultánea
está disponible en español.
*Simultaneous interpretation is
available in Spanish.*



SERVICIOS DE INTERPRETACIÓN *INTERPRETING SERVICES*



On a computer-- At the bottom of the screen will be an interpretation globe. Click that globe and then select *Spanish*.

En una computadora-- En la parte baja de la pantalla habrá un globo de interpretación. Haga clic en ese globo y seleccione "Spanish."



On a mobile device-- At the bottom of the screen, tap the ellipses icon on the bottom right (...).

- Tap *Language Interpretation*.
- Tap *Spanish*.

En un dispositivo móvil-- En la parte baja de la pantalla, toca el icono de elipses en la parte baja derecha (...).

- Toque *Language Interpretation*.
- Toque *Spanish*.



We value your input.

- Please type your questions/comments in the Q&A area of Zoom.
- Questions and answers from this town hall will be posted on PGCPS Capital Programs Suitland High School project profile page.



Opening Remarks



Dr. Monica Goldson
CEO, PGCPS



Kenneth Harris, II
Board Member
District 7



Dr. Charoscar Coleman
Assoc. Superintendent of
Supporting Services



**The Honorable
Joanne Benson**
Senator



Shawn Matlock
Director, Capital Programs



Dr. Ronald Hollis
Principal
Suitland High School



- Team Introductions
- Project/ Design Overview
- Construction Overview
- Communications and Engagement
- Q&A

Team Introductions

PGCPS Proud Alum!



Will Smith
Supervisor of Project Management,
PGPCS Department of Capital Programs

PGCPS Proud Alum!



Sean Nickols
Project Manager,
Department of Capital Programs



Bill Spack
AE, Principal in Charge,
cox graae + spack



Tom Wheeler
AE, Project Manager,
cox graae + spack



Rodney Howlett
AE, Construction Administration Lead
cox graae + spack



Brunson Cooper
Corenic Construction,
President



Joe Swanson
Project Executive,
Turner Construction



Carlos Flores
Senior Project Manager,
Turner Construction

PGCPS Proud Alum!

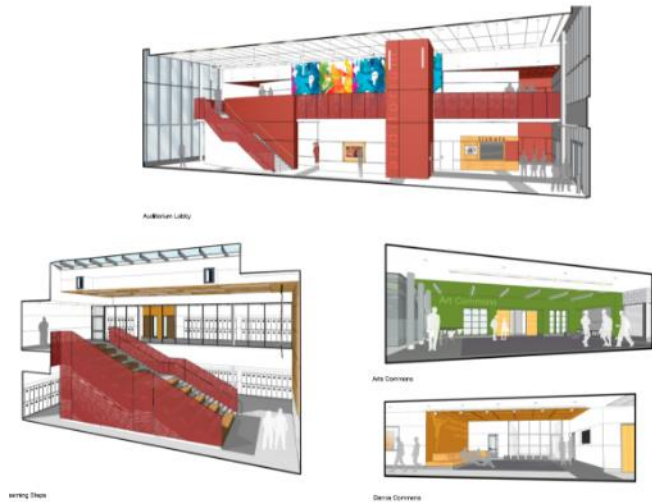


Manny Sampson
Community and Citizenship Manager,
Turner Construction



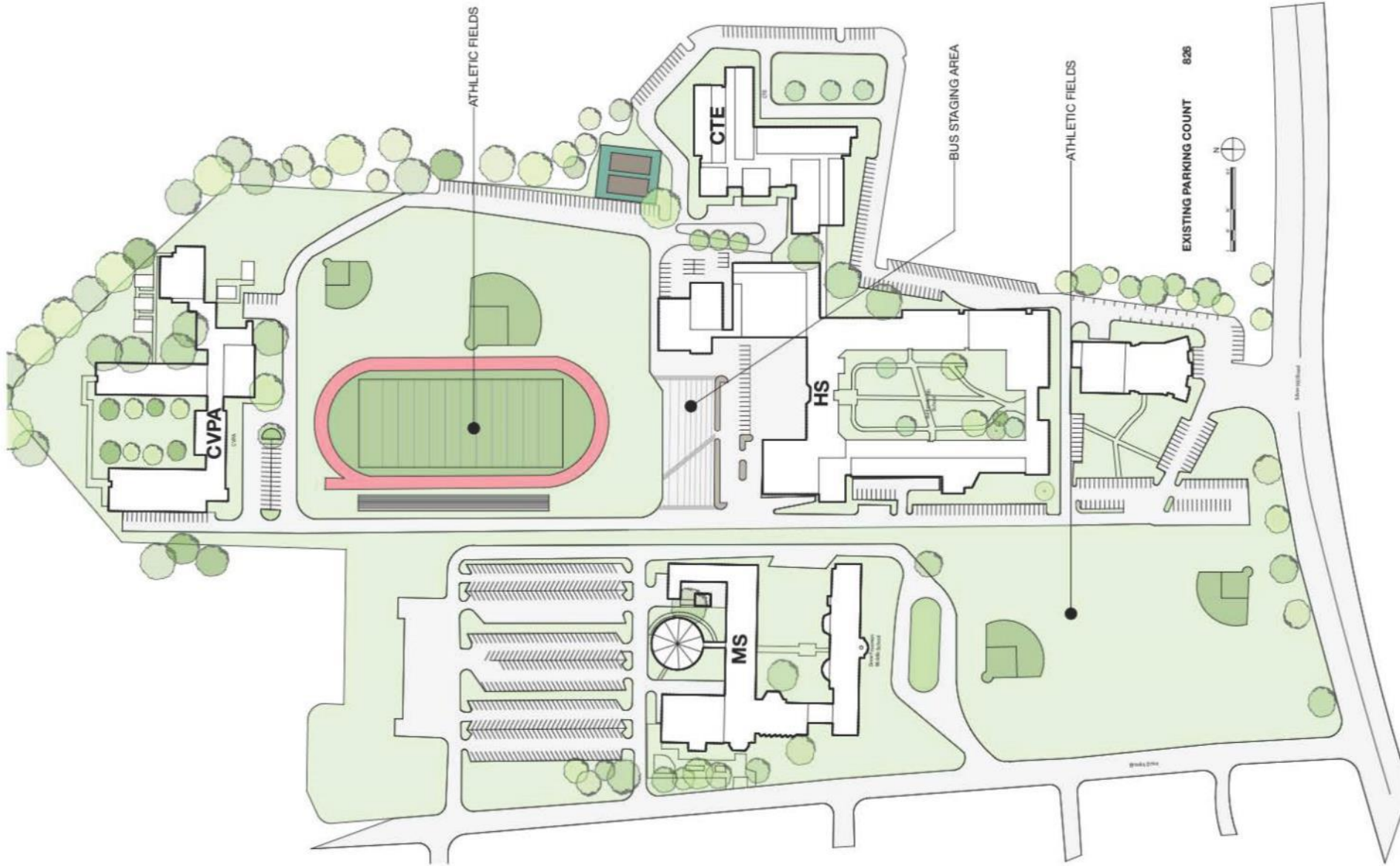
cox graae + spack architects is a nationally recognized architectural design, planning, programming, space planning and interior design firm based in the Georgetown district of Washington, DC. Founded in 1981, the firm has been awarded over 70 regional and national design awards for commissions that encompass historic preservation, renovation, adaptive re-use, additions and new construction. We create places designed not only to satisfy the fundamental objectives of the program and meet all of the technical performance requirements, but to foster a deep sense of pride in their users.

Project Overview: Scope

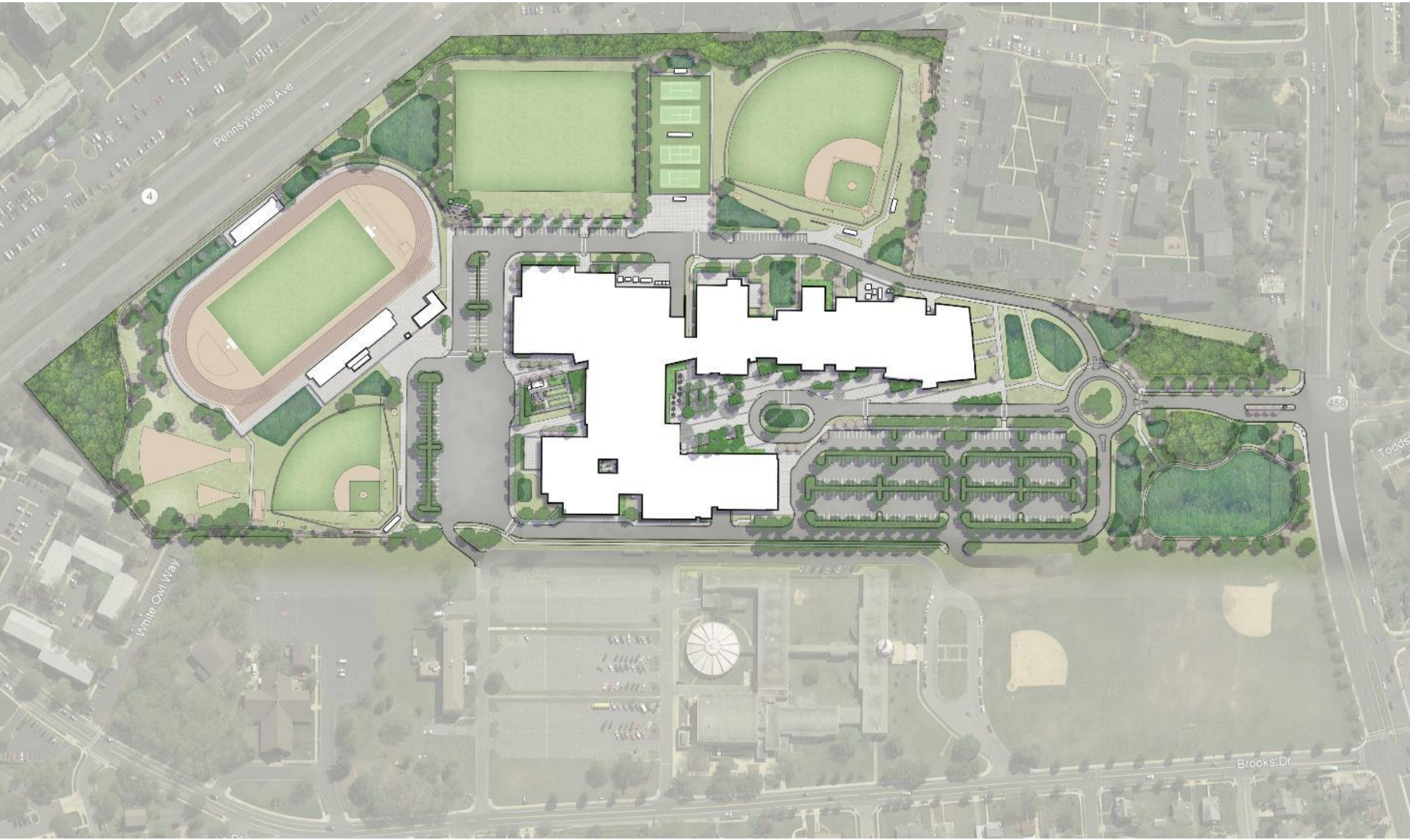


Full replacement of the existing 344,875 SF and 2,477 student Suitland High School Campus consisting of Comprehensive High School (CHS), Center for Visual and Performing (CVPA) Arts and Career Technical Education (CTE). **The proposed design is 389,108 sf with a capacity of 1,500 comprehensive and 500 CVPA students.** The new facility will be one new facility with the comprehensive and the CVPA school programs only. The CTE programs will be relocated to Crossland High School for school year 2022 - 2023, which will be designated as the new southern comprehensive CTE school for the county.

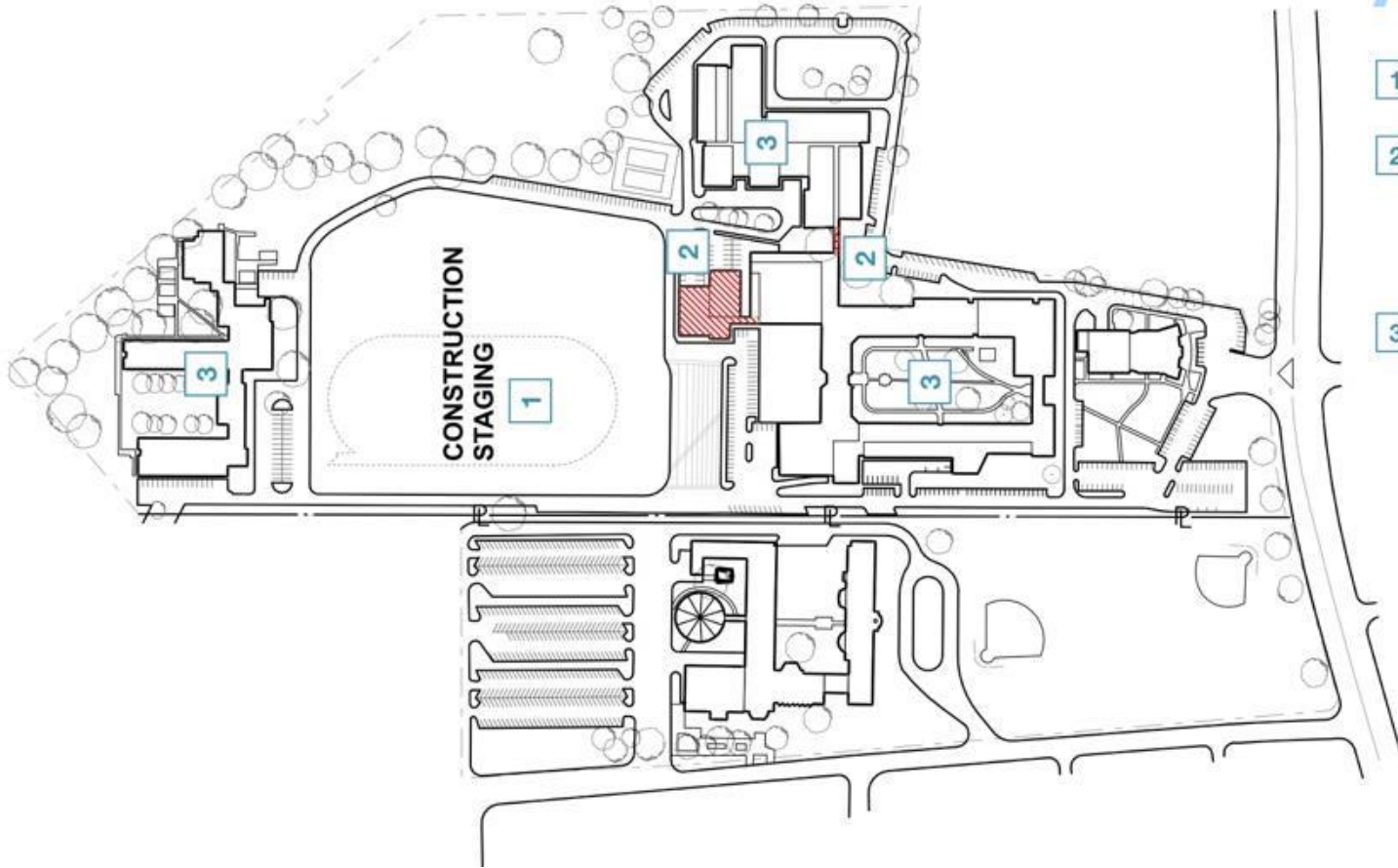
Project Overview: Existing Conditions



Project Overview: Site Plan



Project Overview: Project Phasing



A PHASE 1

- 1 Enclose construction area
- 2 Demolish stadium, girl's gym and locker rooms & connector between CTE and high school
- 3 Students remain in high school, CTE and Annex building during phase 1 construction

Project Overview: Project Phasing



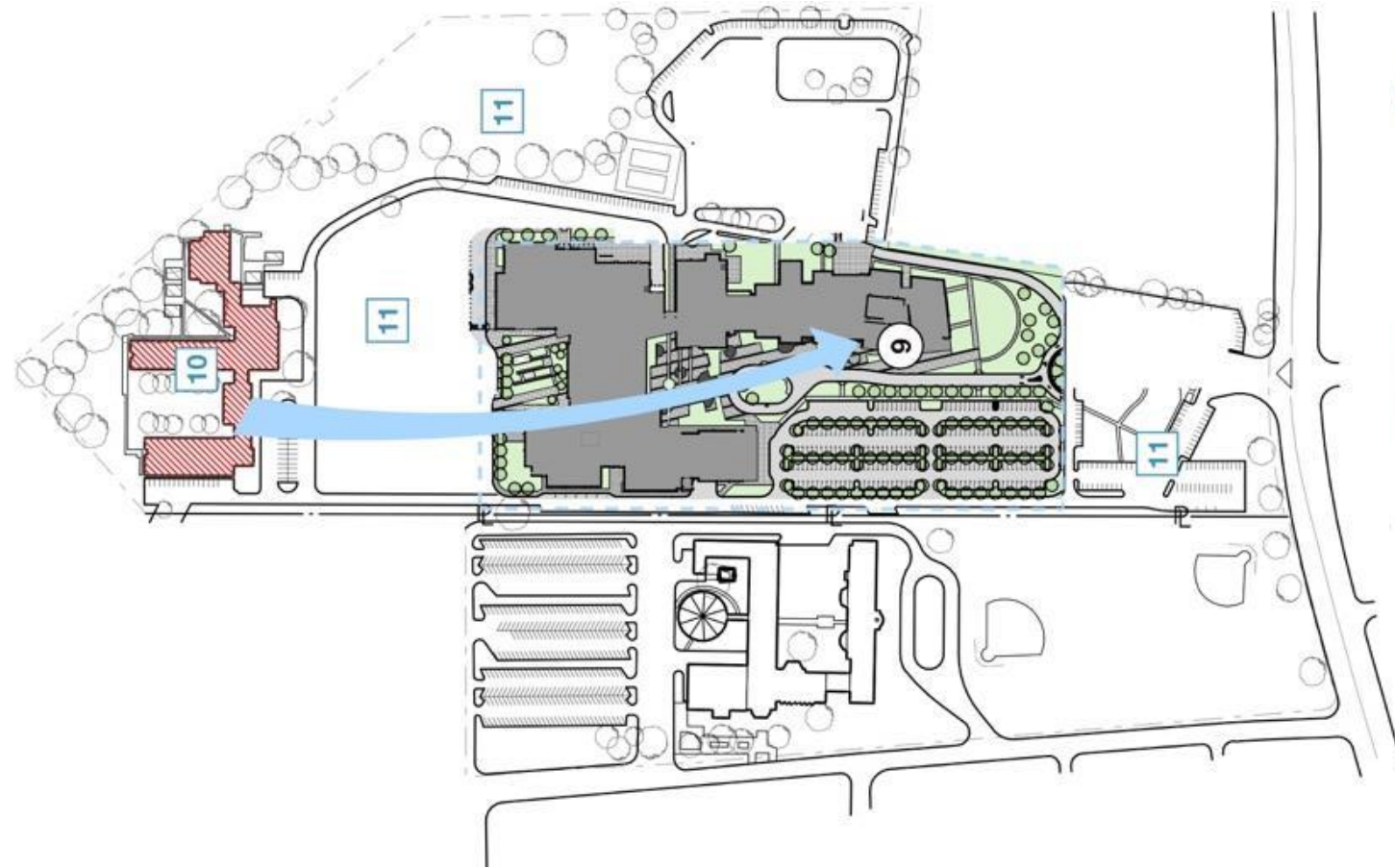
B PHASE 1 & 2

- 4 New high school and shared spaces building completed
- 5 High school students move out of the existing building into new building
- 6 Existing high school, CTE and auditorium is demolished
- 7 CVPA students remain in the Annex
- 8 New CVPA buildings are constructed

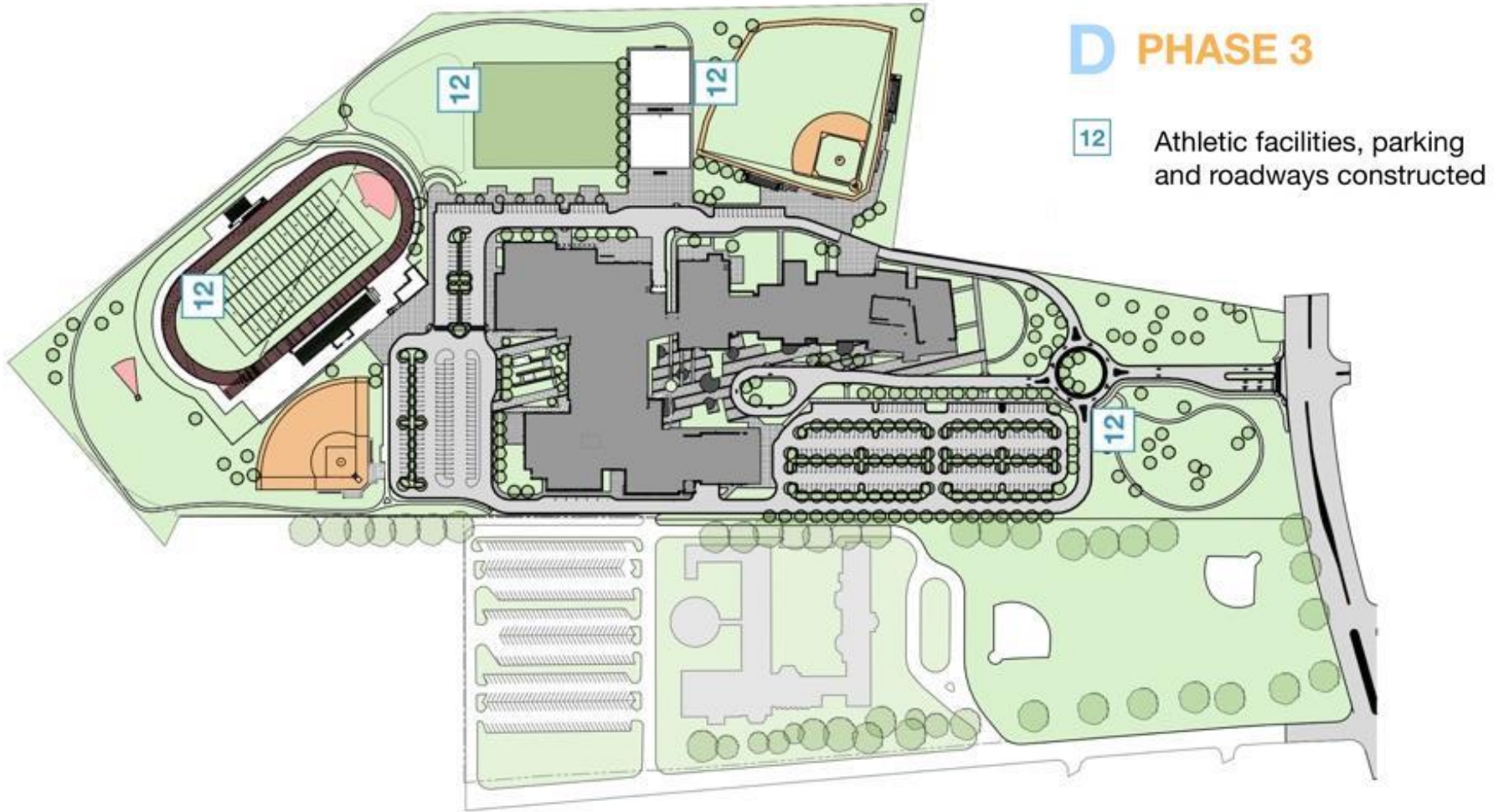
Project Overview: Project Phasing

C PHASE 2 & 3

- 9 CVPA students move out of the Annex and into the new facilities
- 10 Annex is demolished
- 11 Remaining site features are removed



Project Overview: Project Phasing



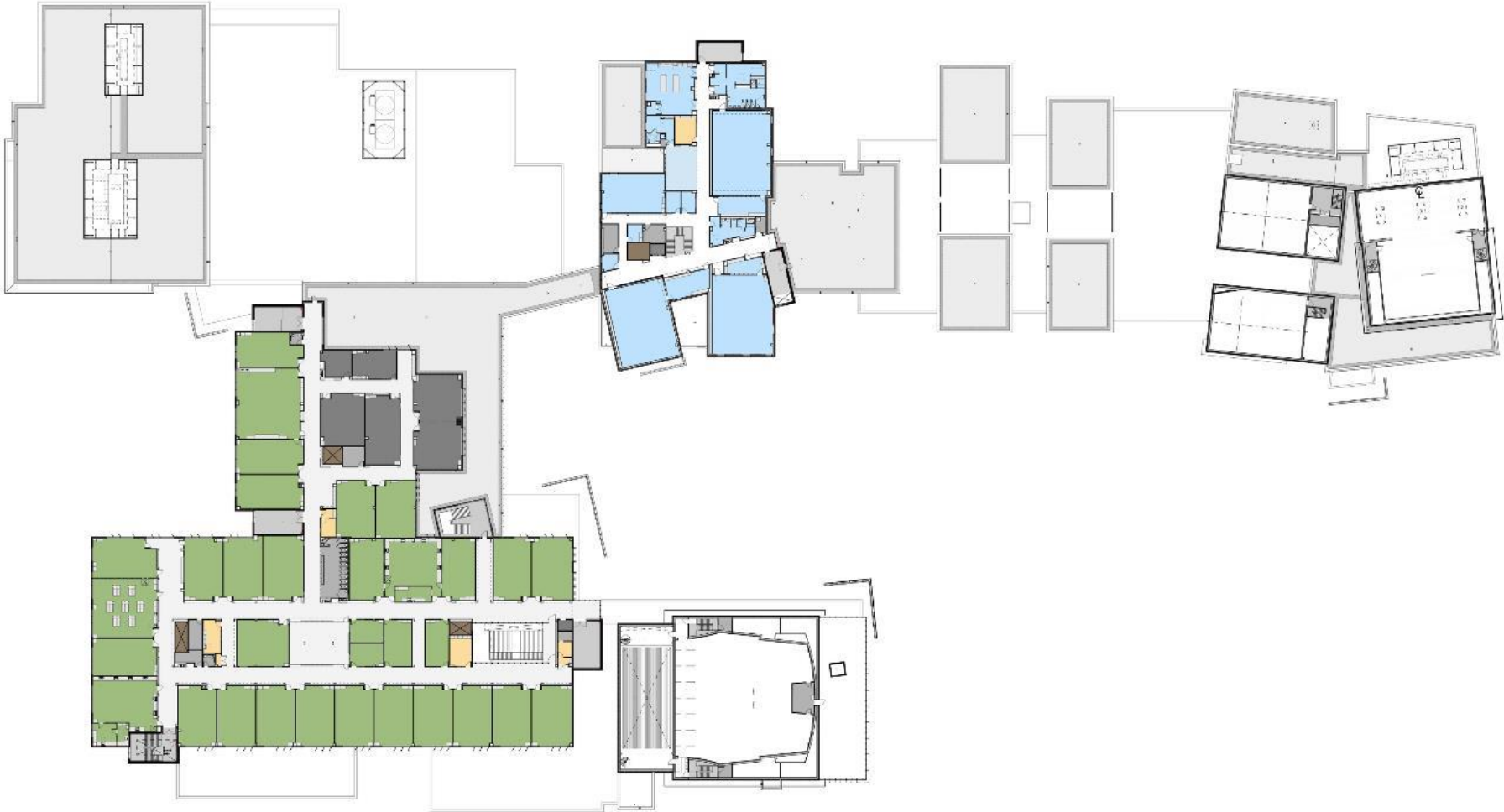
Project Overview: Floor Plans, Ground/ 1st Floor



Project Overview: Floor Plans, Second Floor



Project Overview: Floor Plans, Third Floor



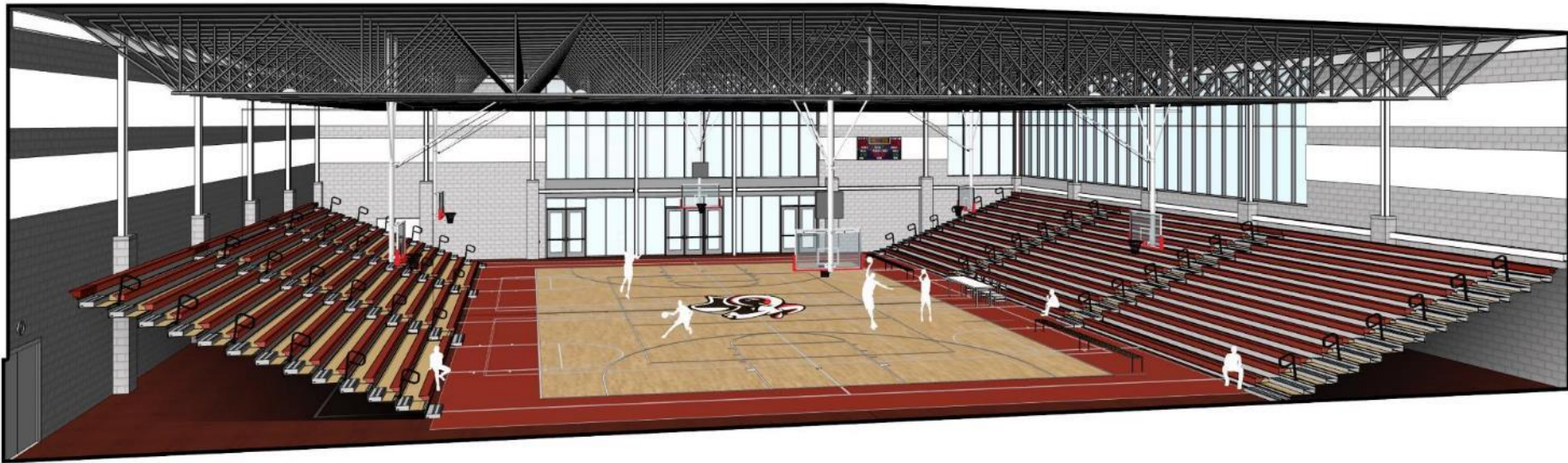
Project Overview: Interior View @ Dining Commons



Project Overview: Interior View @ Media Center



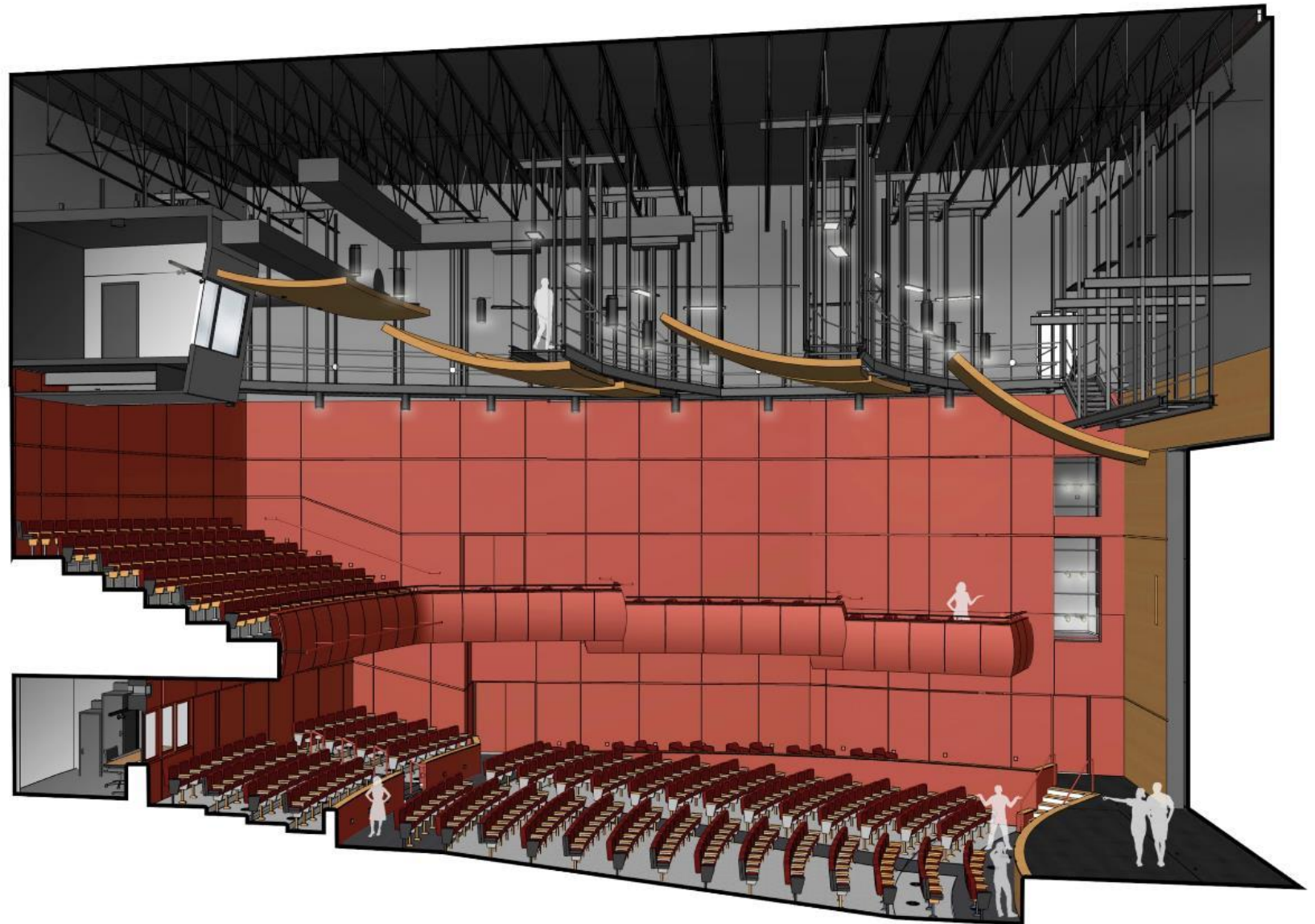
Project Overview: Interior View @ Competition Gymnasium



Project Overview: Interior View @ High School Auditorium Lobby



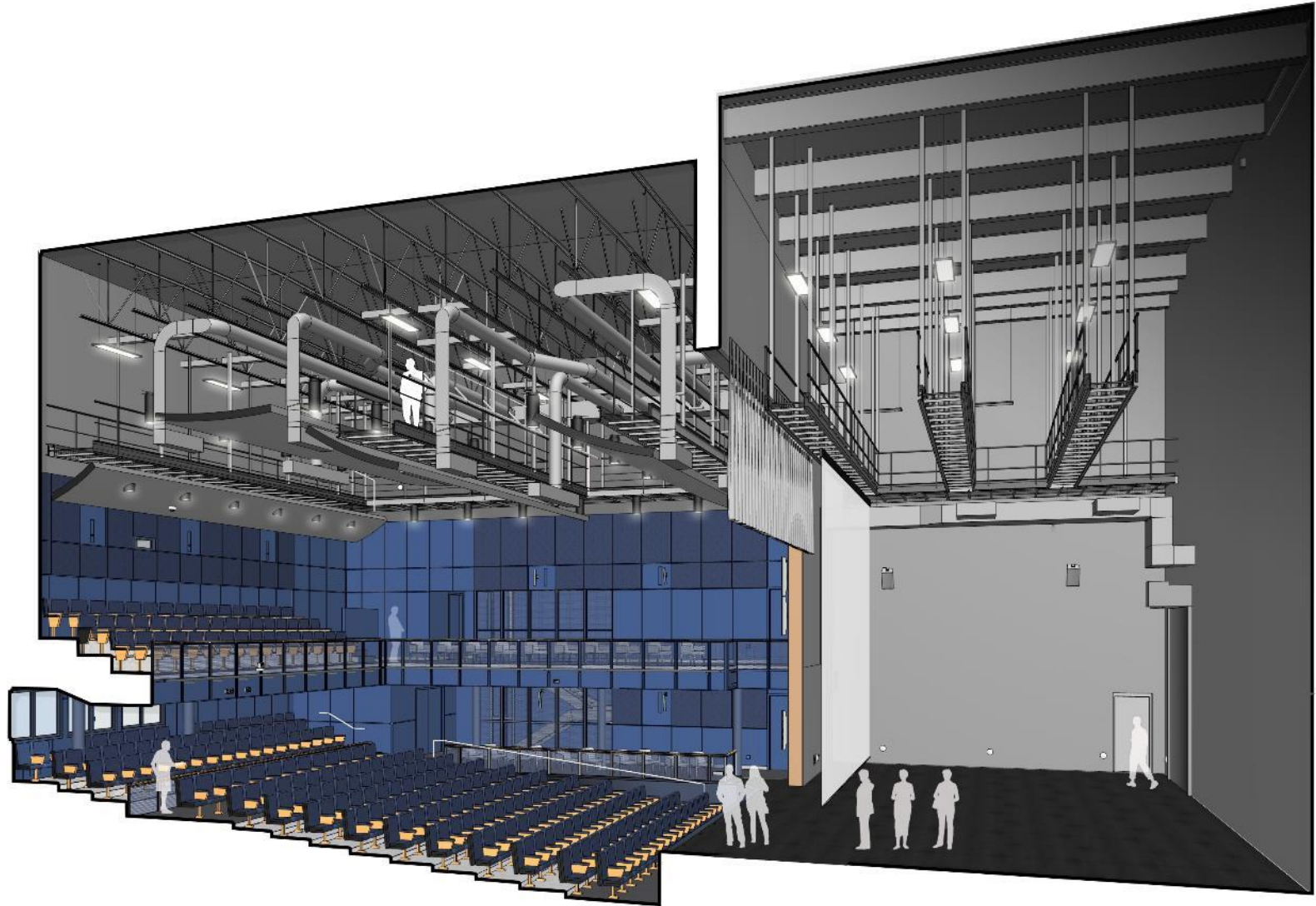
Project Overview: Interior View @ High School Auditorium



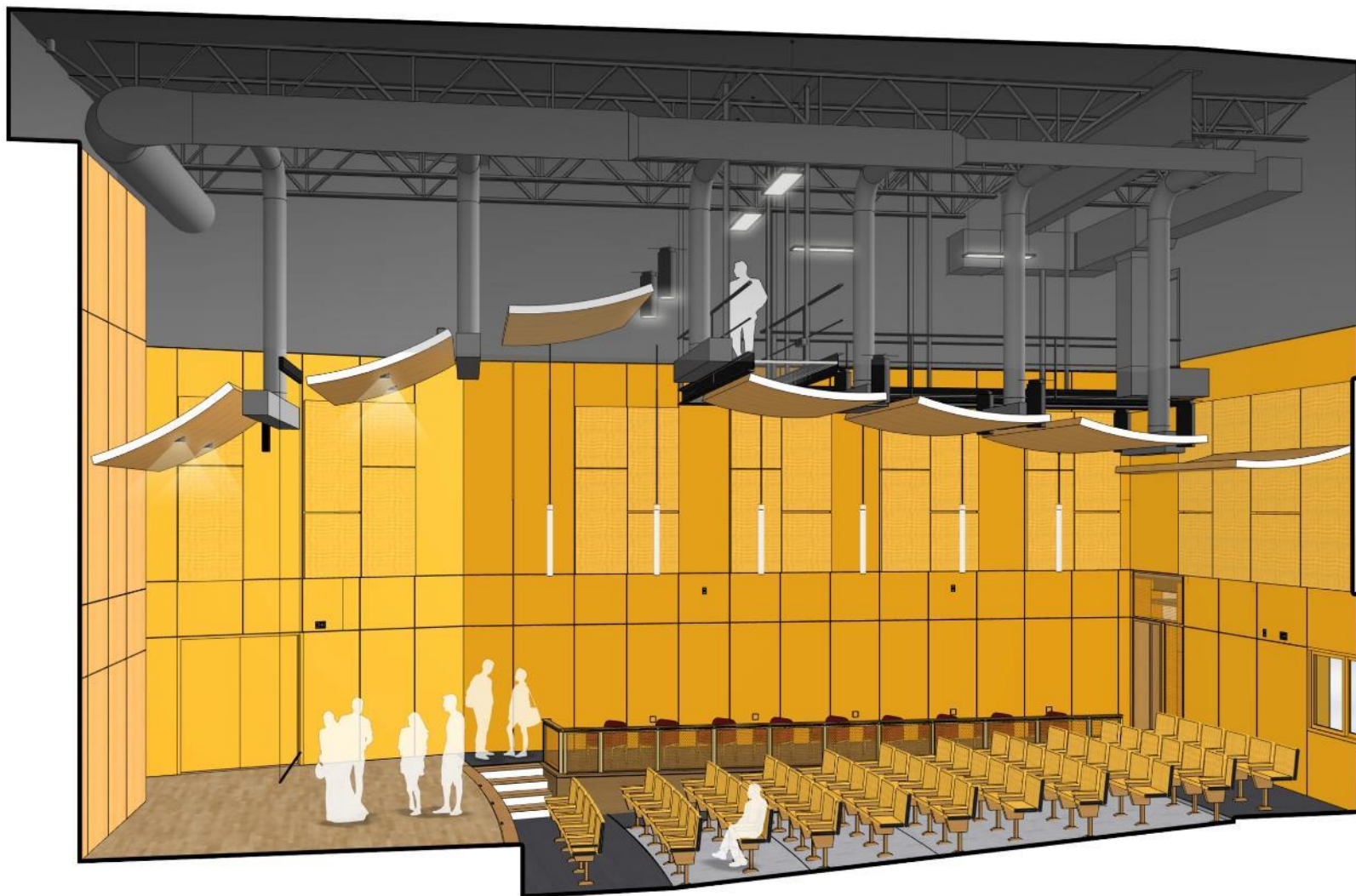
Project Overview: Interior View @ CVPA Performance Lobby



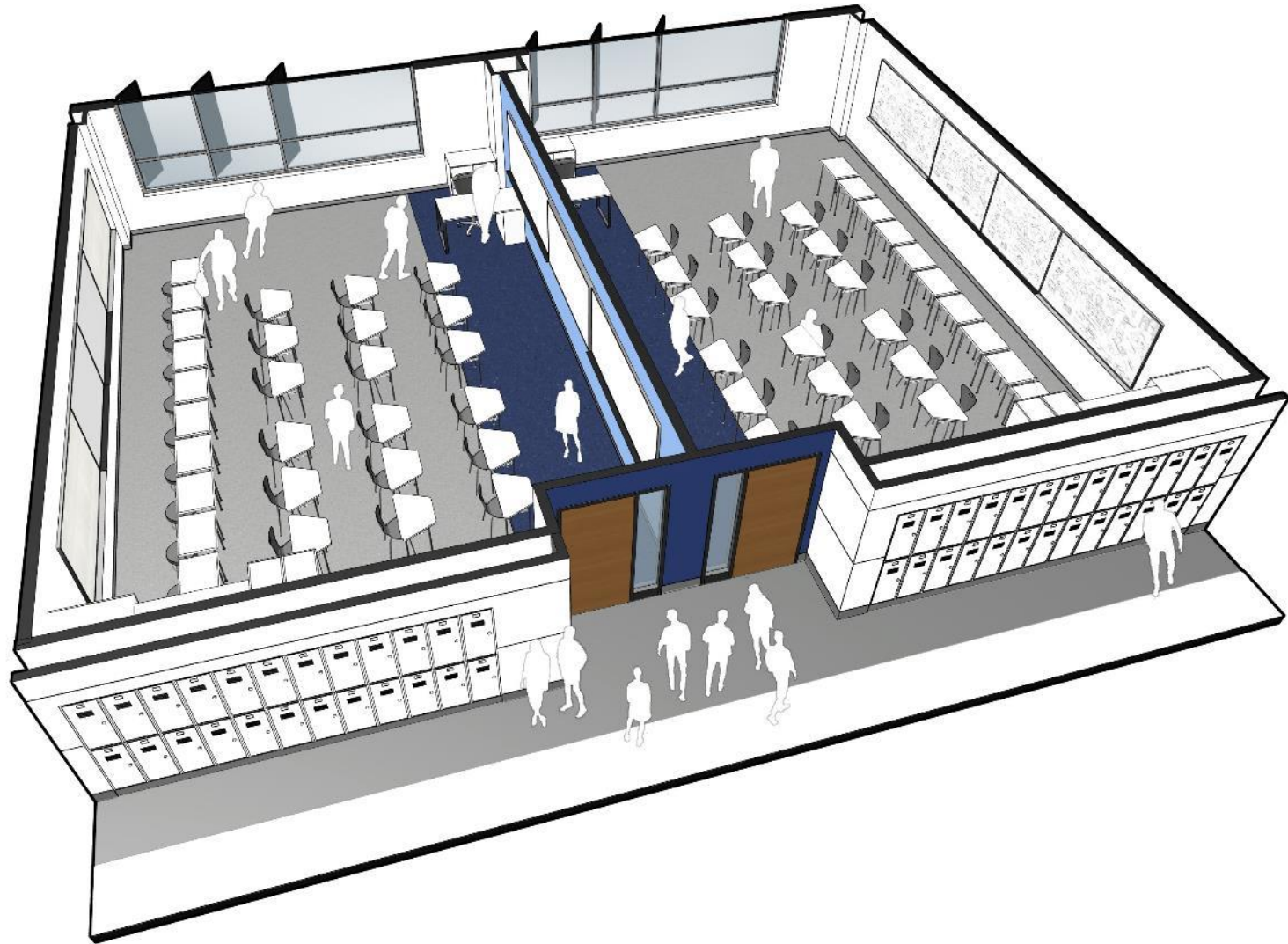
Project Overview: Interior View @ Teaching Theater



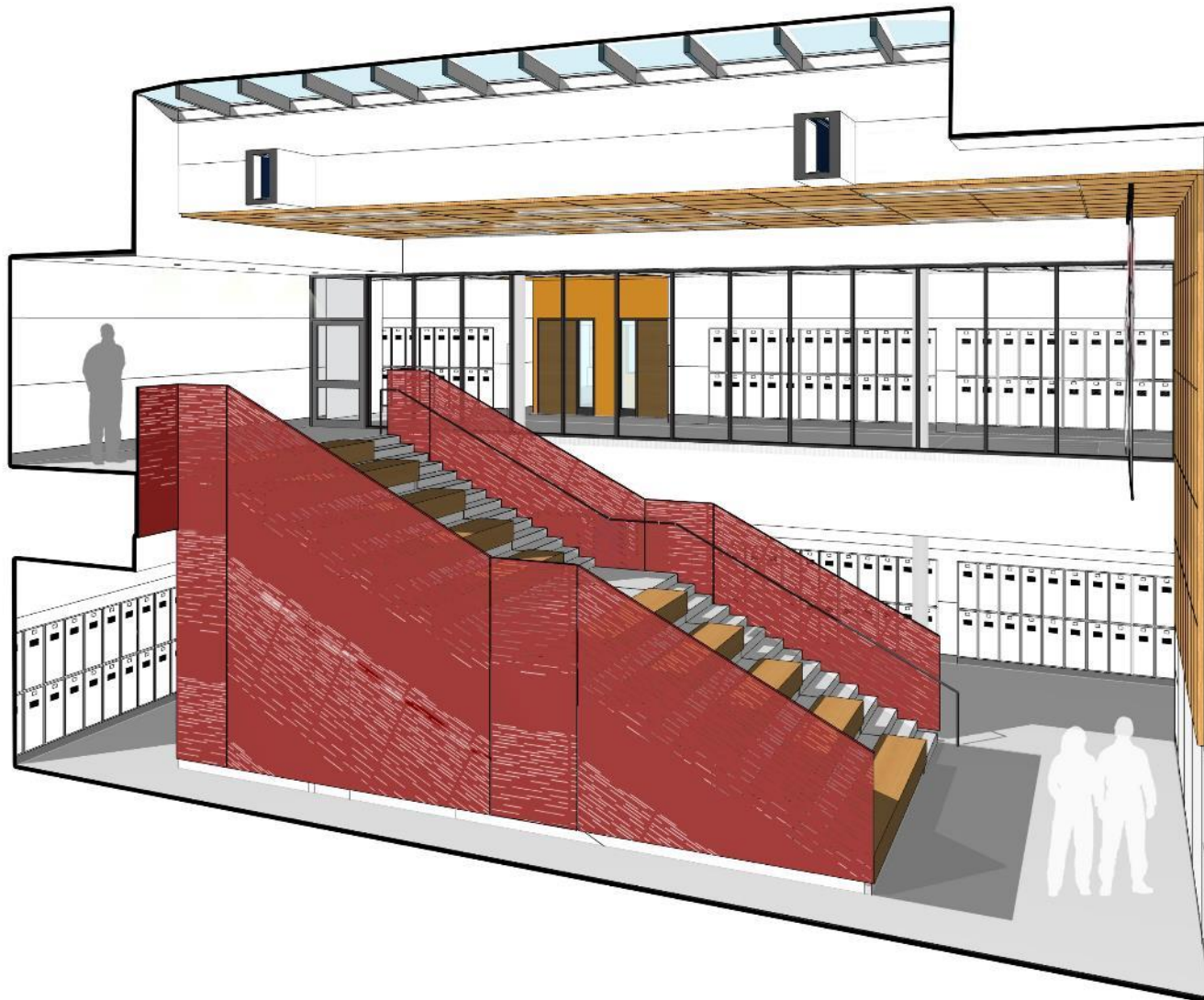
Project Overview: Interior View @ Recital Hall



Project Overview: Interior View @ Typical Classrooms



Project Overview: Interior View @ Learning Steps



Project Overview: Interior View @ Art Commons



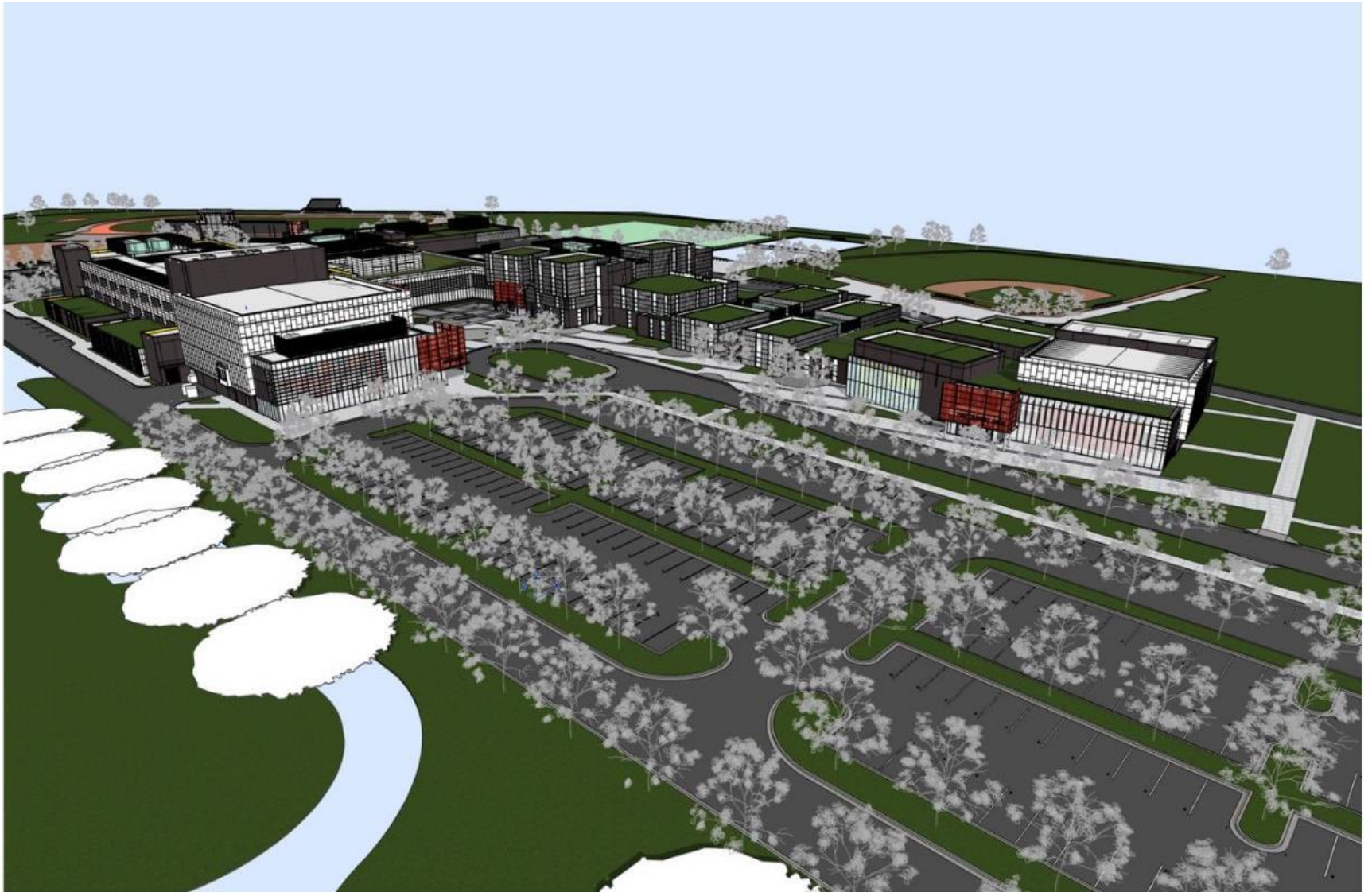
Project Overview: Interior View @ Academic Commons



Project Overview: Interior View @ Dance Commons



Project Overview: Exterior View



Aerial View from Southwest

Project Overview: Exterior View



Project Overview: Exterior View



Aerial View from Northwest

Project Overview: Exterior View



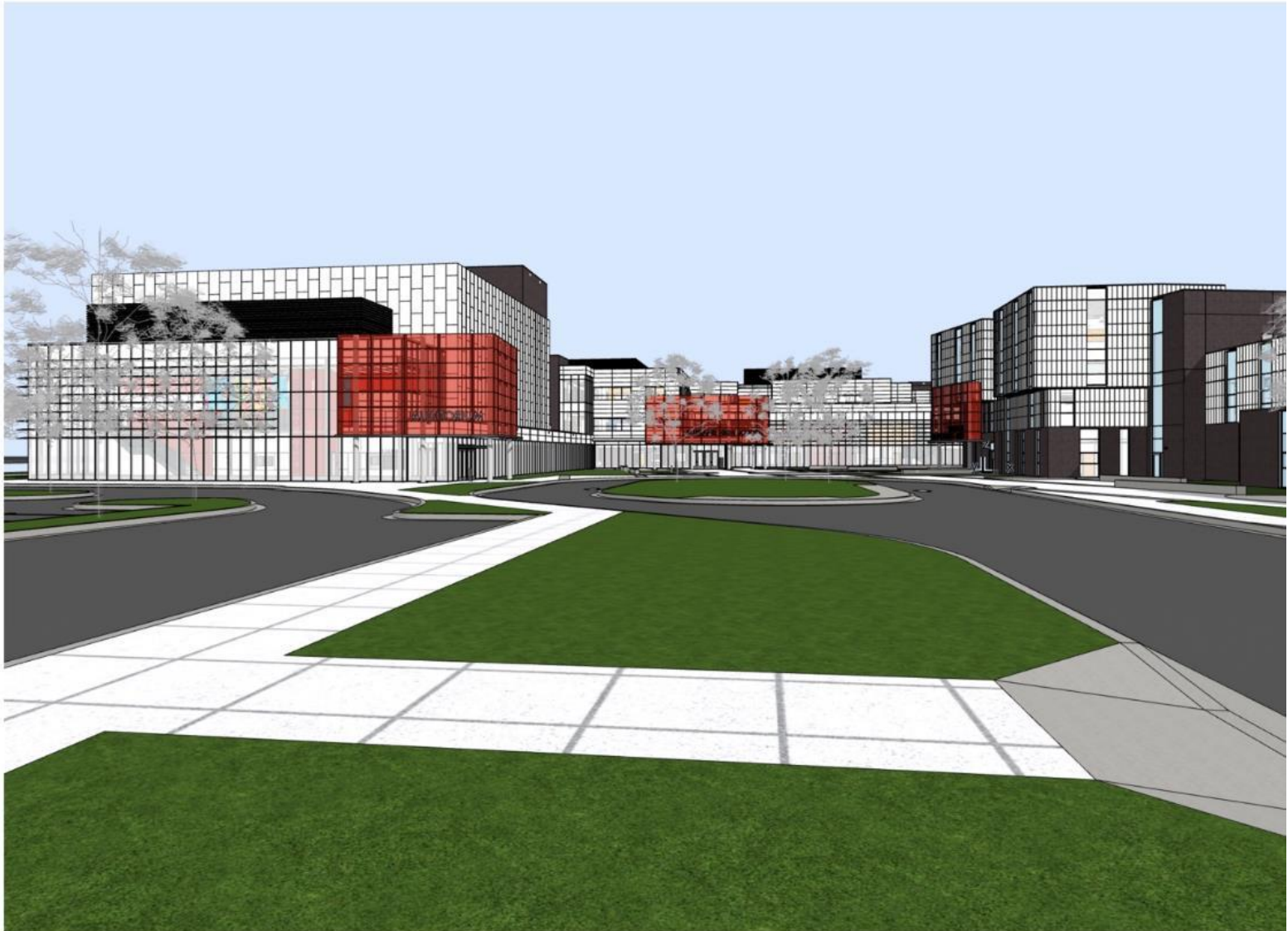
Entry View

Project Overview: Exterior View



CVPA Theater View

Project Overview: Exterior View



Entry Plaza View

Project Overview: Exterior View



Theater View from Drop Off

Project Overview: Exterior View



Entry View from Drop Off

Project Overview: Exterior View



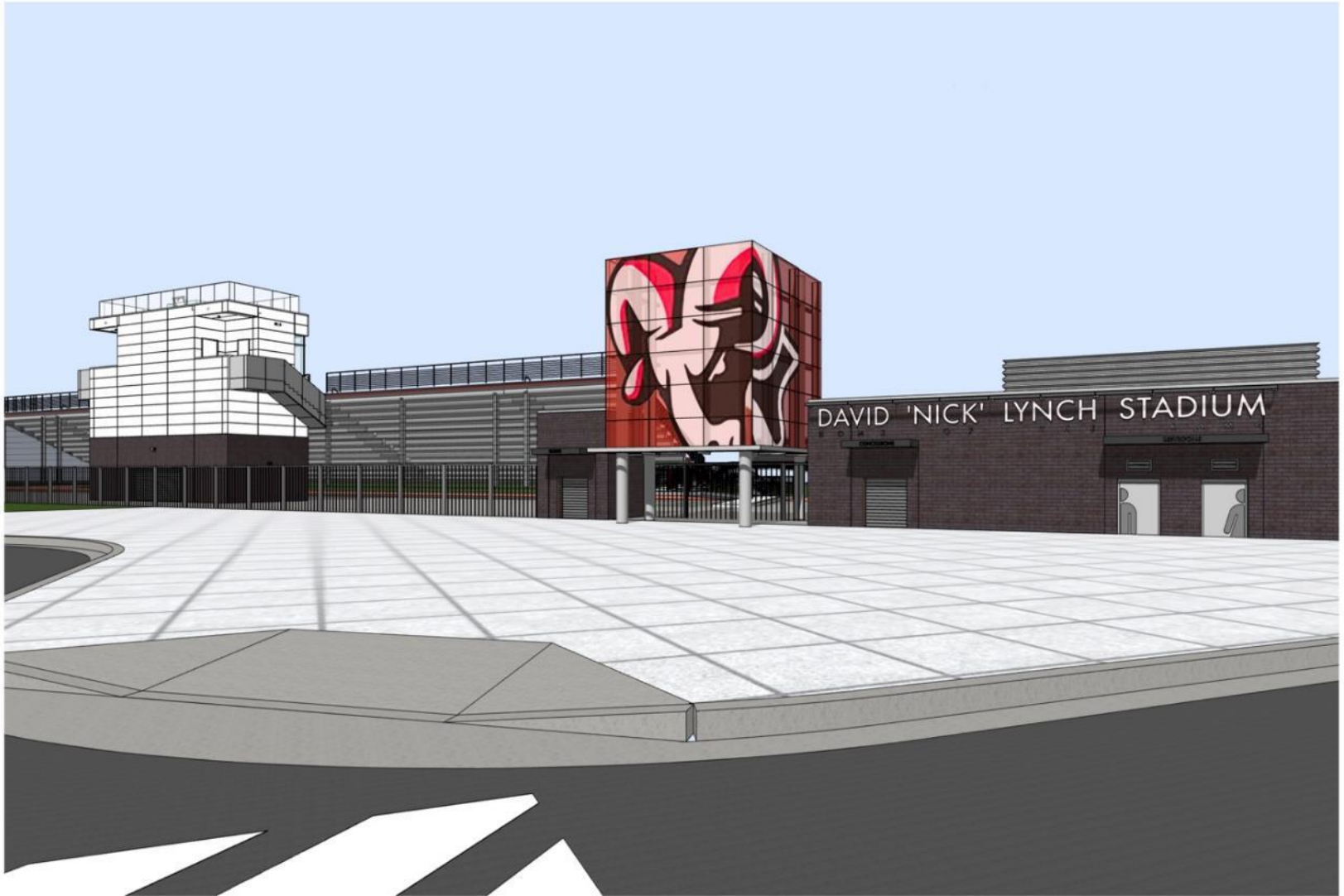
CHS Academic Wing from North

Project Overview: Exterior View



Gym View From North

Project Overview: Exterior View



Stadium View from South

General Contractors: Turner-Corenic



Turner

Founded in 1902

Global Headquarters: New York City

African-American Led Business Unit
in Washington D.C./Metropolitan Area

#1 Green Builder in the Country

Turner

CORENIC

SUITLAND HS
JOINT VENTURE

CORENIC CONSTRUCTION

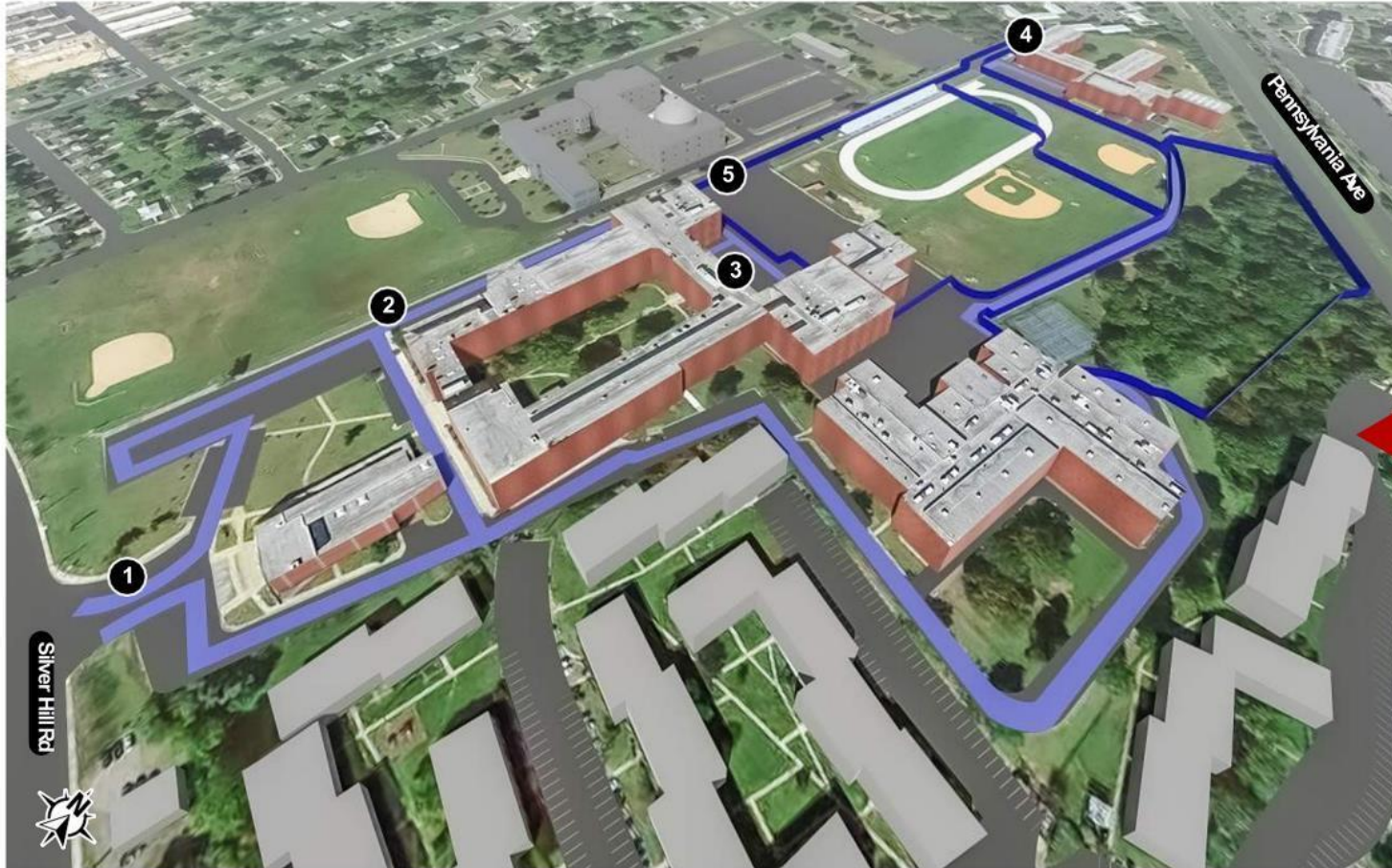
Founded in 2009

Prince George's County-Based

MDOT MBE/DBE Certified
General Contracting Firm

Recognized Leader in Interior
Construction

Construction Overview: Phase I Construction North



KEY ACTIVITIES

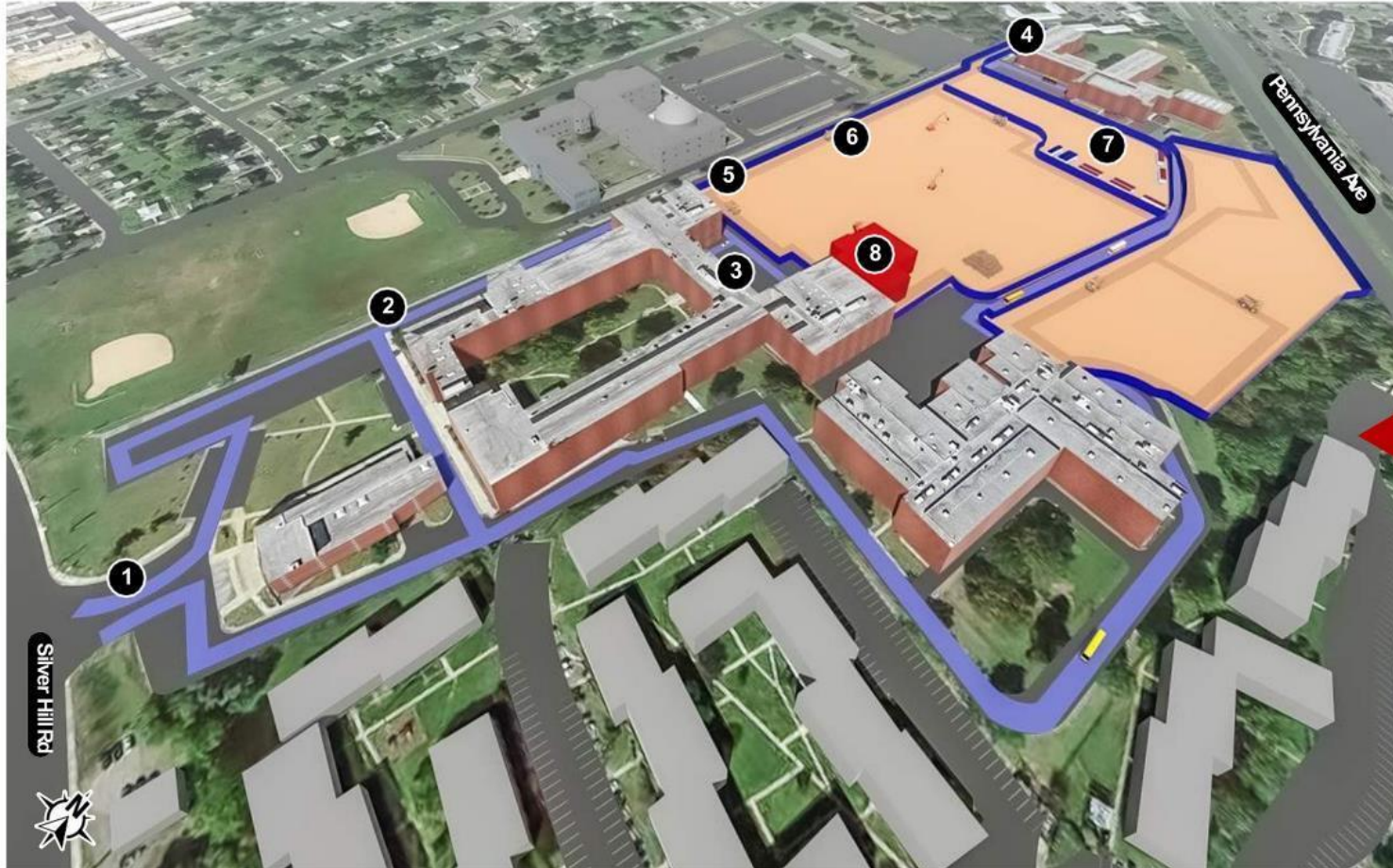
- Establish Site office. Site Utility Investigations
- Site Surveys and Layout. E&S Controls
- Start clearing and grubbing
- Set up Big Room (Project Team)
- Set up Perimeter Fence, Gates and Covid-19 Procedures

LEGEND

1. School Entrance
2. School Traffic Route
3. Bus Staging Area
4. Construction Entrance
5. Construction Fence



Construction Overview: Phase I Construction North



KEY ACTIVITIES

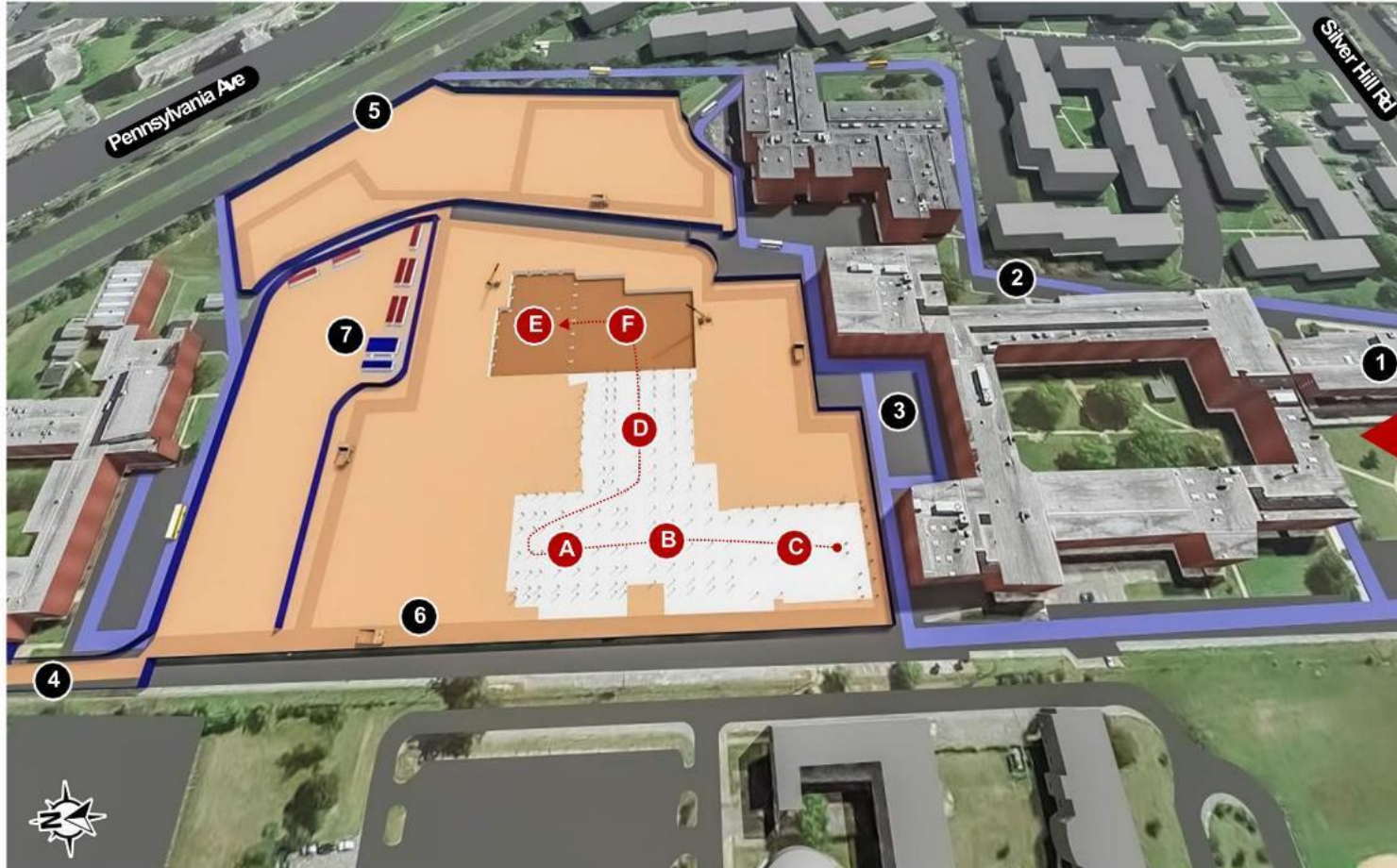
- Construct PH 1 Storm water BMPS
- Establish temporary roads, lots, and drives
- Selective Demolition of school
- Site Demolition at building pad
- Set up off-site Laydown Space
- Set up off-site Parking Area
- Underground Utility Locating

LEGEND

1. School Entrance
2. School Traffic Route
3. Bus Staging Area
4. Construction Entrance
5. Construction Fence
6. Construction Traffic Route
7. Construction Trailers and Construction Parking
8. Abate and Demolish Existing Structure



Construction Overview: Phase I Construction North



KEY ACTIVITIES

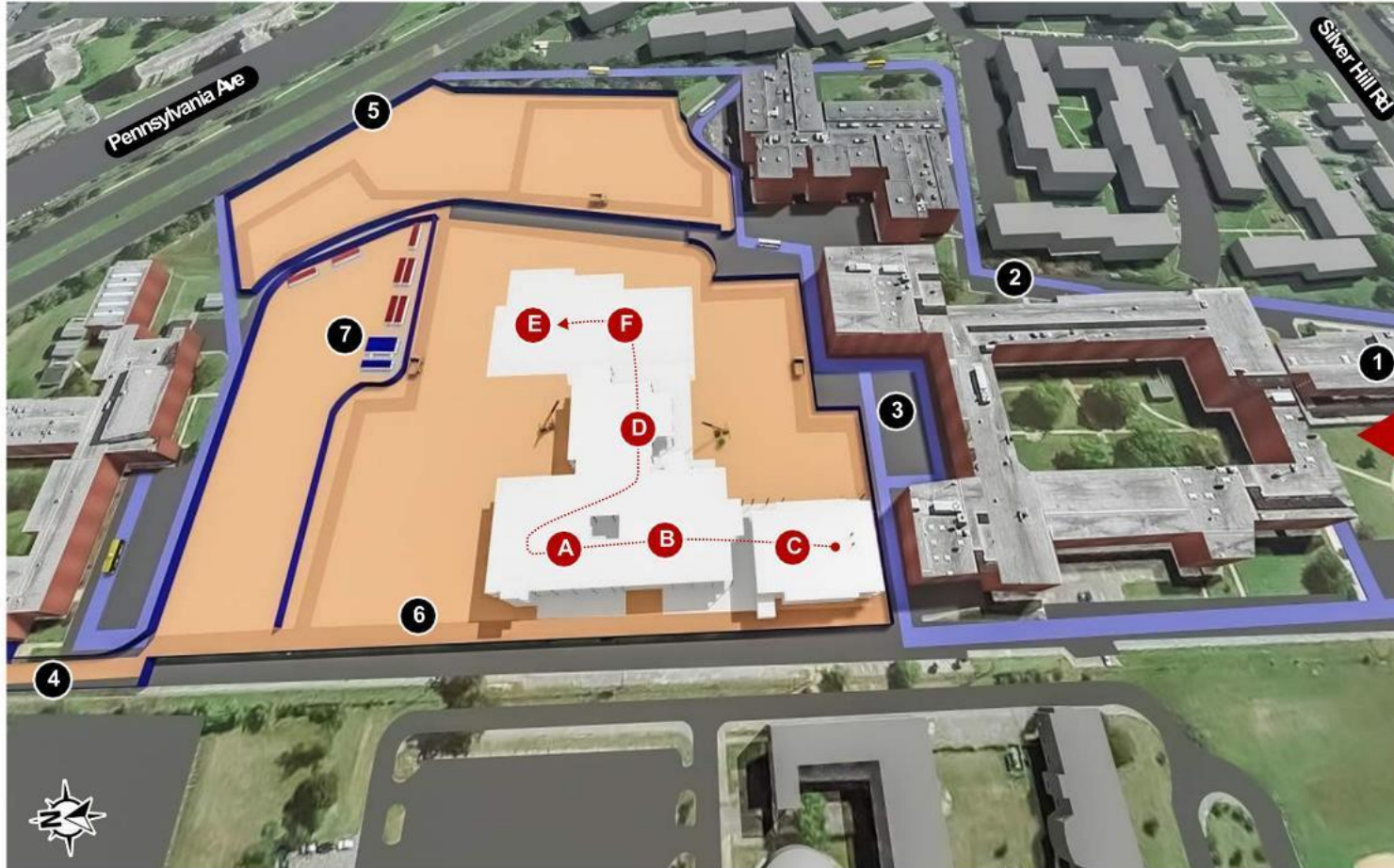
- Foundation concrete, under slab utilities, concrete slab, steel structure
- Flow of Work C - B - A - D - F - E

LEGEND

1. School Entrance
2. School Traffic Route
3. Bus Staging Area
4. Construction Entrance
5. Construction Fence
6. Construction Traffic Route
7. Construction Trailers and Construction Parking



Construction Overview: Phase I Construction North



KEY ACTIVITIES

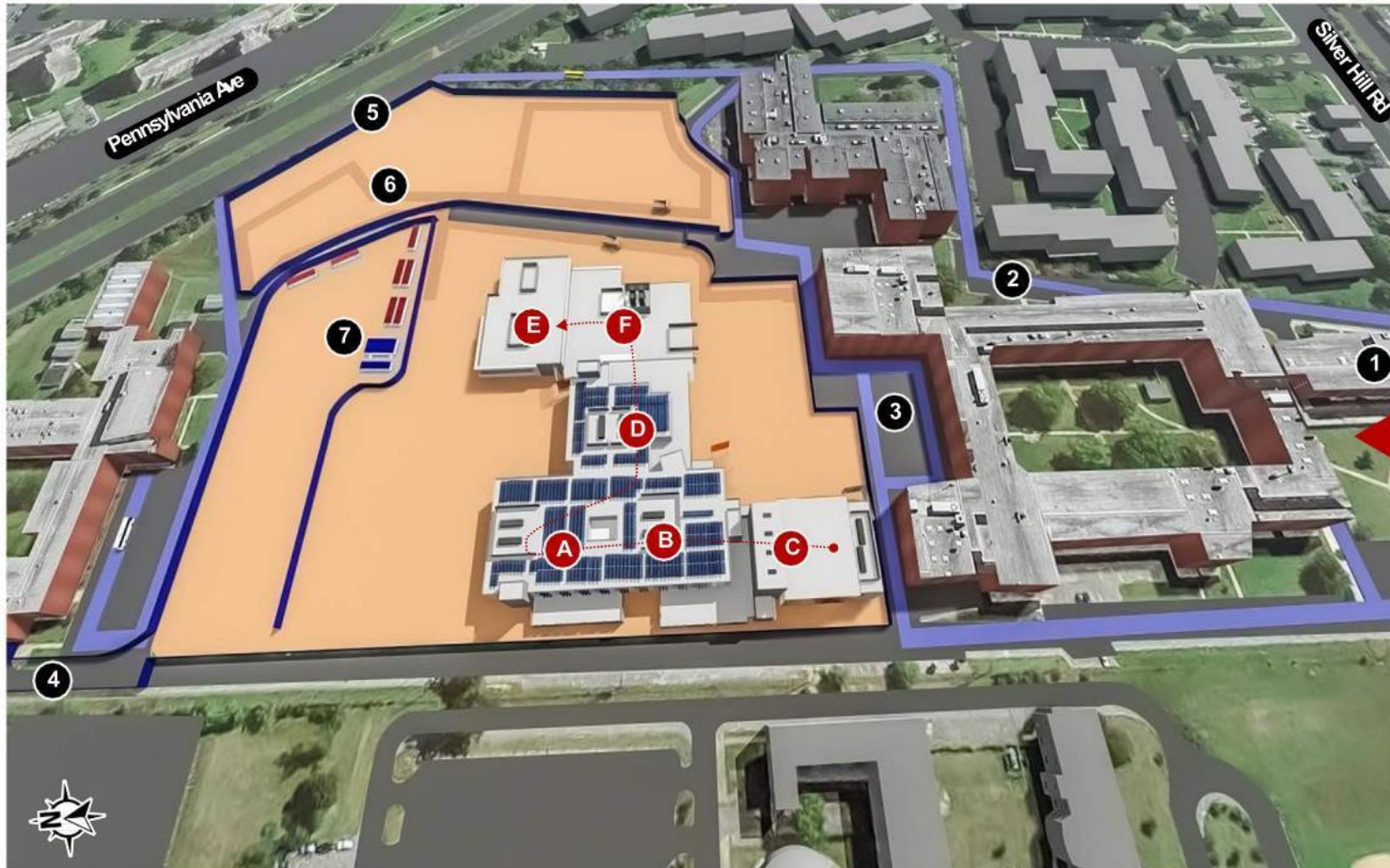
- Erect steel structure
- Two crane locations anticipated
- Flow of Work C - B - A - D - F - E

LEGEND

1. School Entrance
2. School Traffic Route
3. Bus Staging Area
4. Construction Entrance
5. Construction Fence
6. Construction Traffic Route
7. Construction Trailers and Construction Parking



Construction Overview: Phase I Construction North



KEY ACTIVITIES

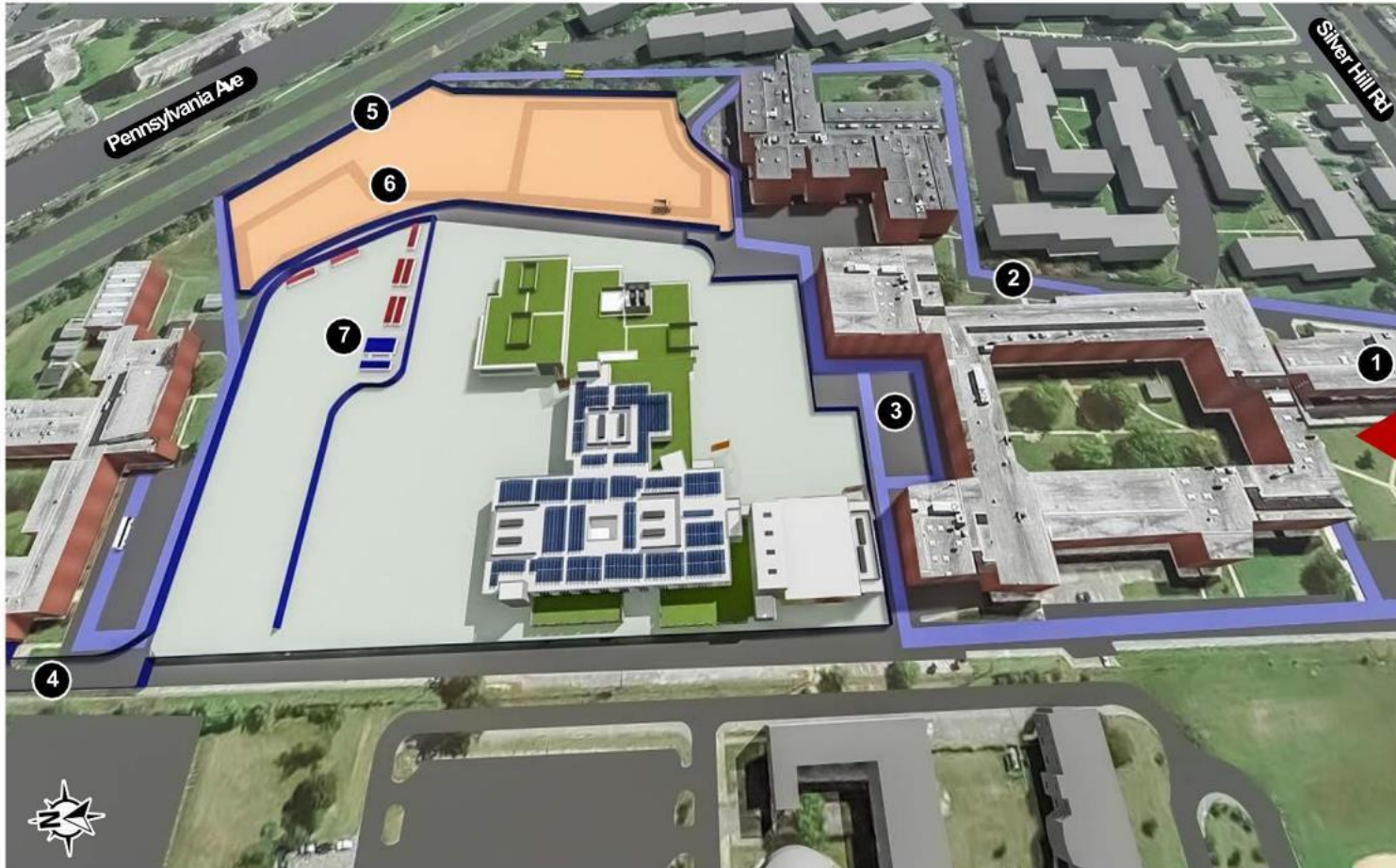
- Roofing Activities
- Façade Activities
- Curtain wall Activities
- Primary work to be done off boom lifts
- Flow of Work C - B - A - D - F - E

LEGEND

1. School Entrance
2. School Traffic Route
3. Bus Staging Area
4. Construction Entrance
5. Construction Fence
6. Construction Traffic Route
7. Construction Trailers and Construction Parking



Construction Overview: Phase I Construction North



KEY ACTIVITIES

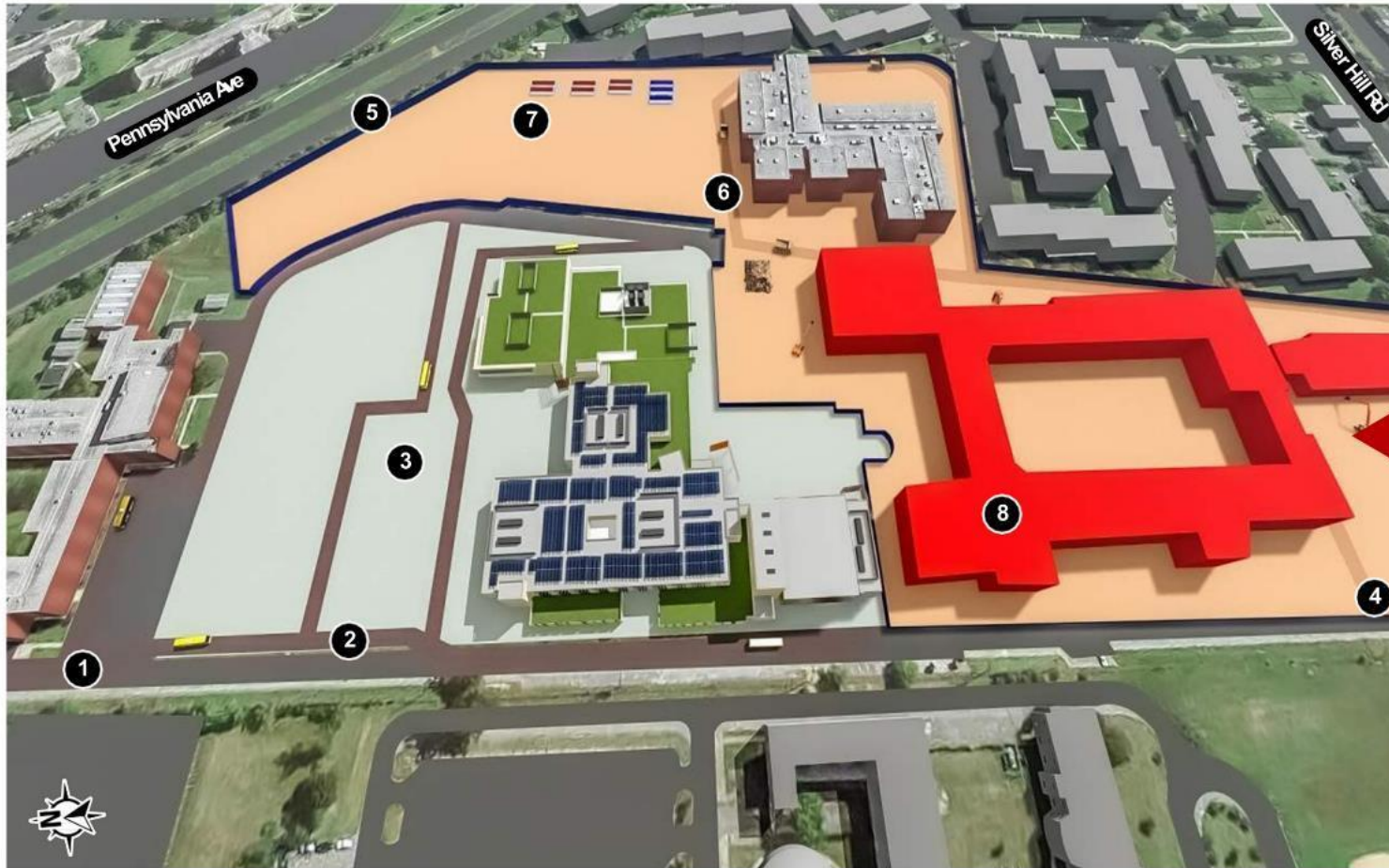
- Temporarily use school entrance during Summer 2023
- Site demolition and install new utilities in driveway up to building
- New HVAC, Plumbing, and Electrical Systems
- New Interior Fit Out and Interior Finishes
- Flow of work is West to East, 1st Floor - 2nd - 3rd

LEGEND

1. School Entrance
2. School Traffic Route
3. Bus Staging Area
4. Construction Entrance
5. Construction Fence
6. Construction Traffic Route
7. Construction Trailers and Construction Parking



Construction Overview: Phase II Construction South



KEY ACTIVITIES

- Flip Construction Entrance with School Entrance
- Move Trailers
- Move out of old and move into new
- Create temporary parking
- Open School

LEGEND

1. School Entrance
2. School Traffic Route
3. Bus Staging Area
4. Construction Entrance
5. Construction Fence
6. Construction Traffic Route
7. Construction Trailers and Construction Parking
8. Abate and Demolish Old School

2022

2023

2024

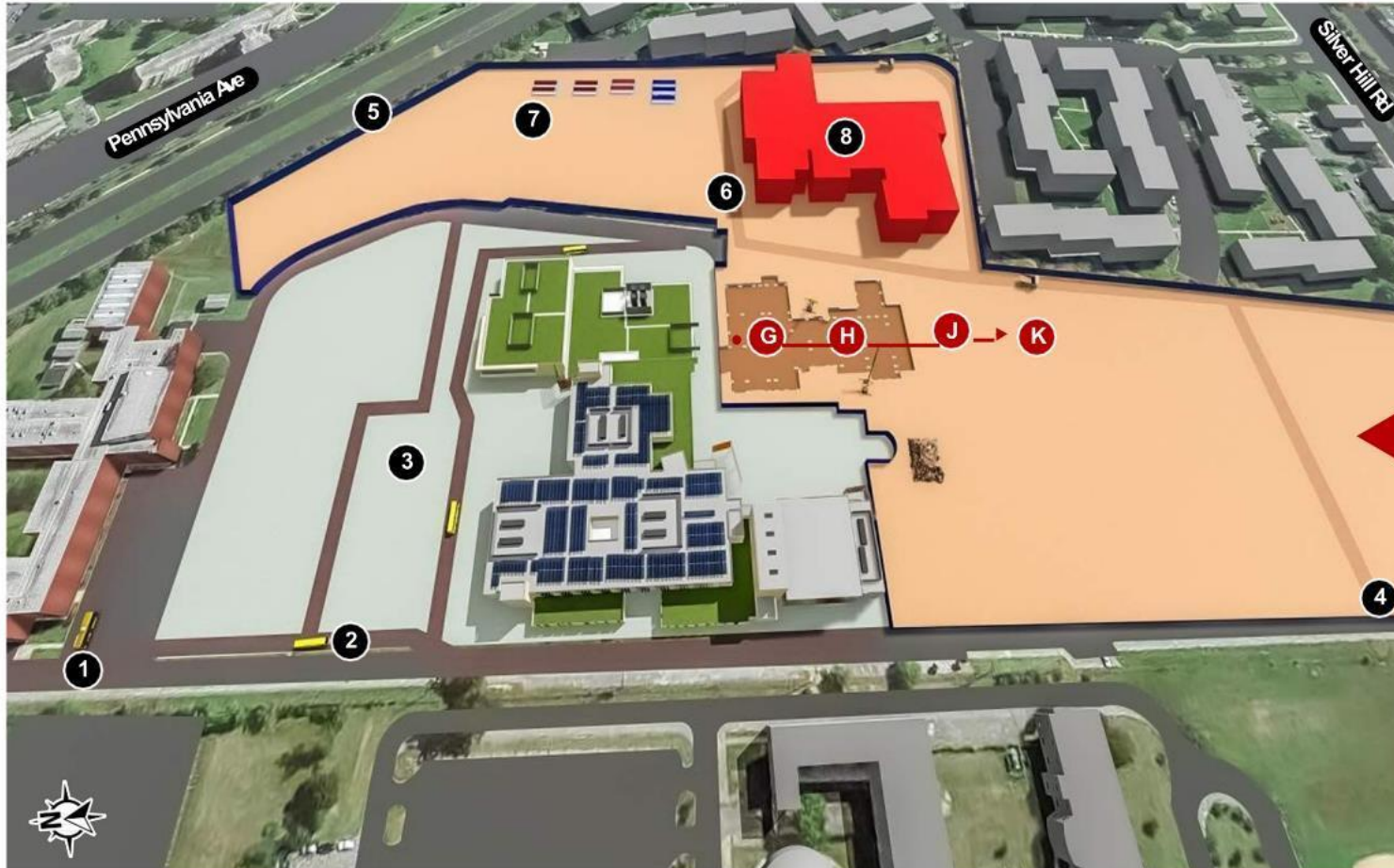
2025

2026

May Jun Jul Aug Sep Oct Nov Dec Jan Feb Mar Apr May Jun Jul Aug Sep Oct Nov Dec Jan Feb Mar Apr May Jun Jul



Construction Overview: Phase II Construction South



KEY ACTIVITIES

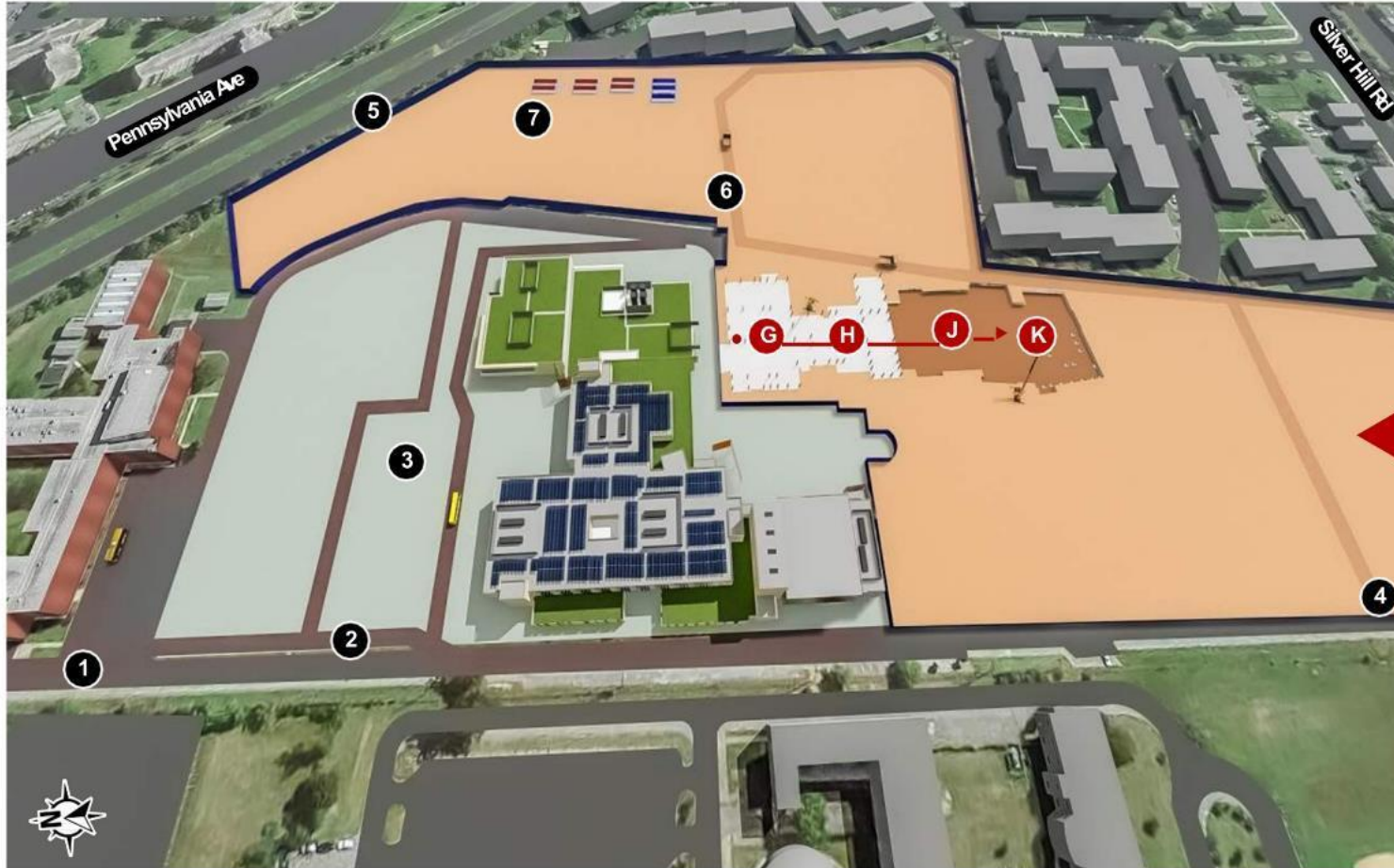
- Demo and abate old school
- Flow of work G - H - J - K

LEGEND

1. School Entrance
2. School Traffic Route
3. Bus Staging Area
4. Construction Entrance
5. Construction Fence
6. Construction Traffic Route
7. Construction Trailers and Construction Parking
8. Abate and Demolish Existing Structure



Construction Overview: Phase II Construction South



KEY ACTIVITIES

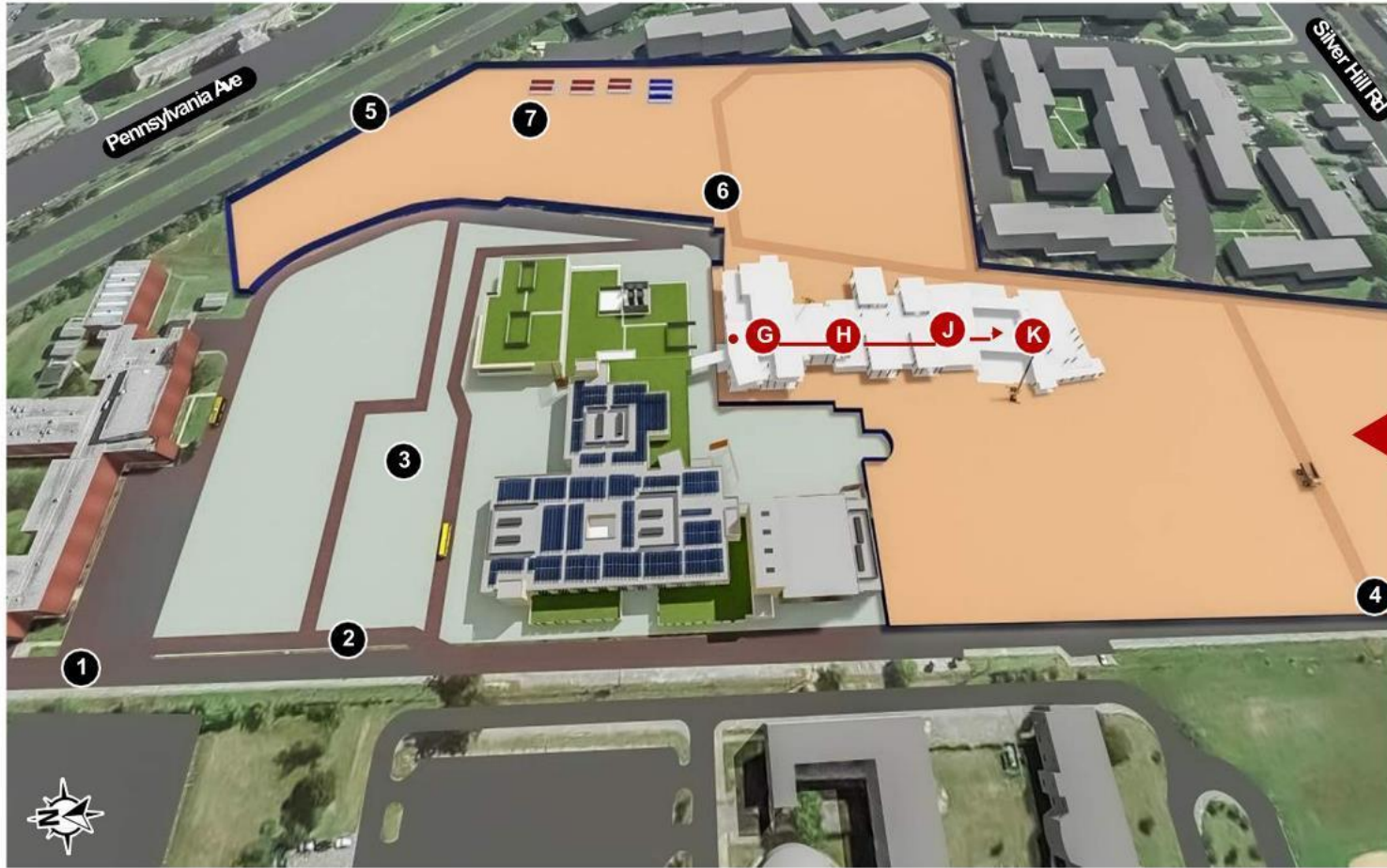
- Foundation concrete, underslab utilities, concrete slab on grade
- Flow of work G - H - J - K

LEGEND

1. School Entrance
2. School Traffic Route
3. Bus Staging Area
4. Construction Entrance
5. Construction Fence
6. Construction Traffic Route
7. Construction Trailers and Construction Parking



Construction Overview: Phase II Construction South



KEY ACTIVITIES

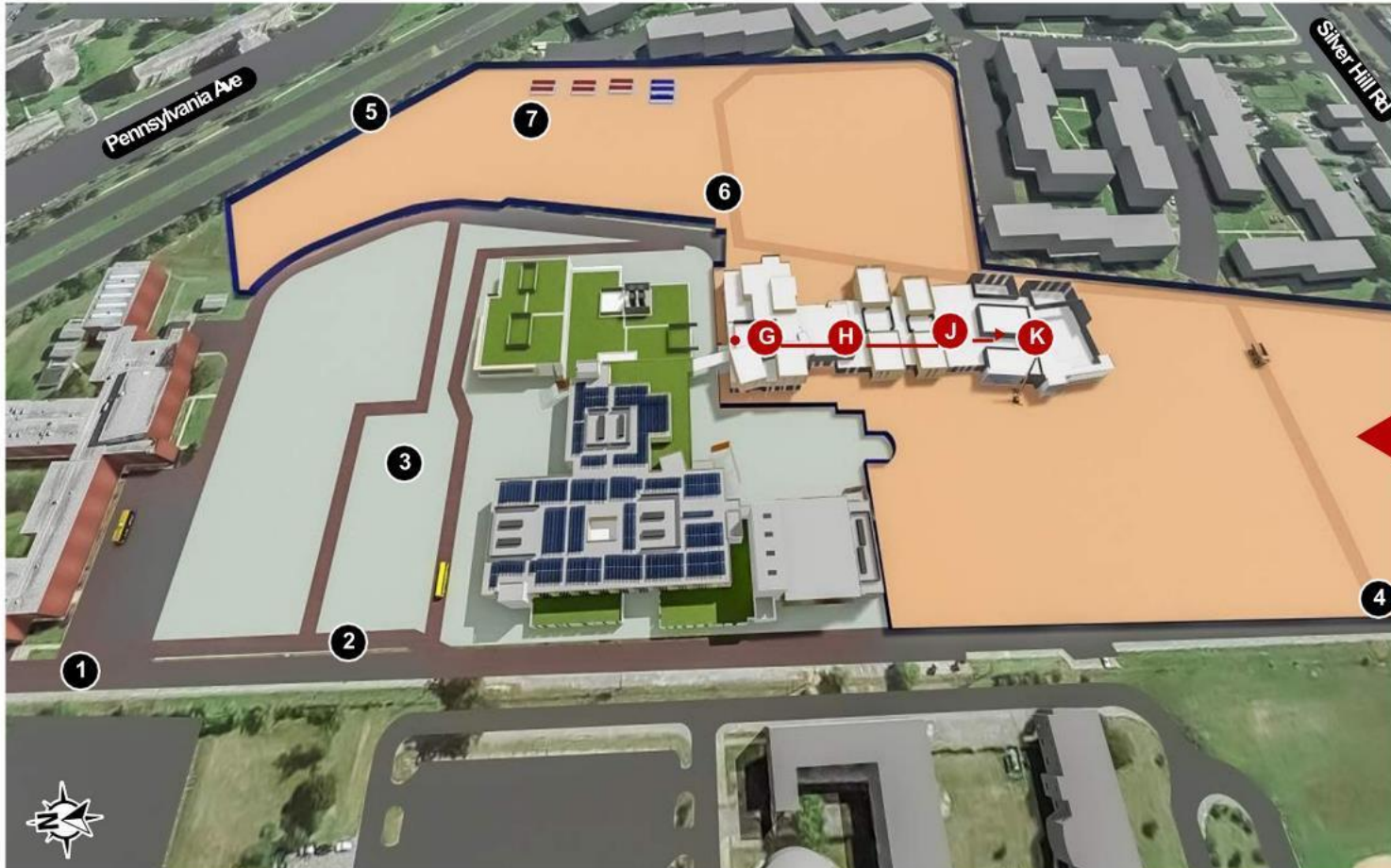
- Steel structure.
- Flow of work G - H - J - K

LEGEND

1. School Entrance
2. School Traffic Route
3. Bus Staging Area
4. Construction Entrance
5. Construction Fence
6. Construction Traffic Route
7. Construction Trailers and Construction Parking



Construction Overview: Phase II Construction South



KEY ACTIVITIES

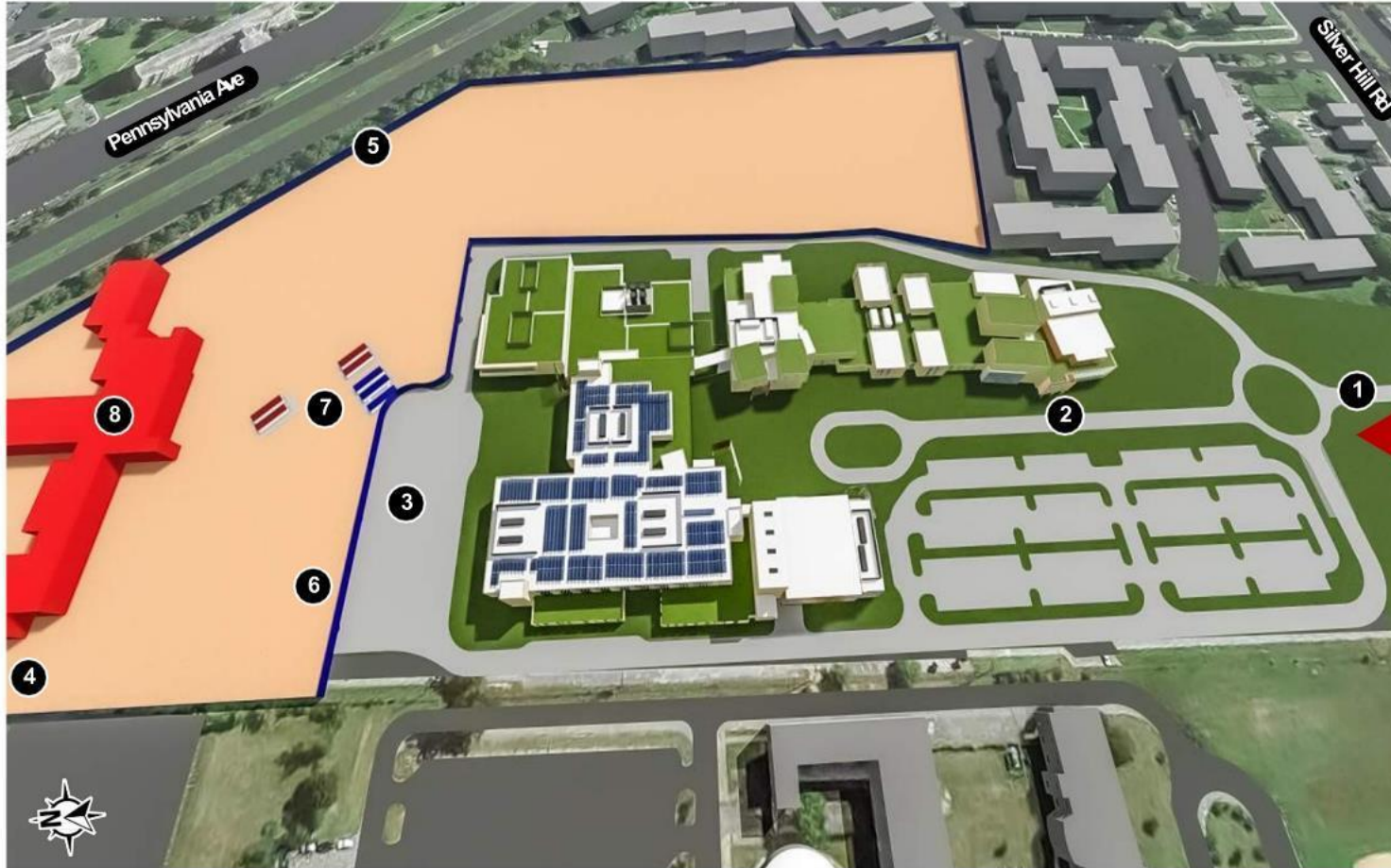
- Roofing. Façade. Curtain wall.
- Flow of work G- H - J- K, 1st - 2nd - 3rd
- MEP infrastructure, Interior Fit Out
- Expand Phase 1 Building Systems to Phase 2.
- Prepare for building commissioning

LEGEND

1. School Entrance
2. School Traffic Route
3. Bus Staging Area
4. Construction Entrance
5. Construction Fence
6. Construction Traffic Route
7. Construction Trailers and Construction Parking



Construction Overview: Phase III Construction Fields



KEY ACTIVITIES

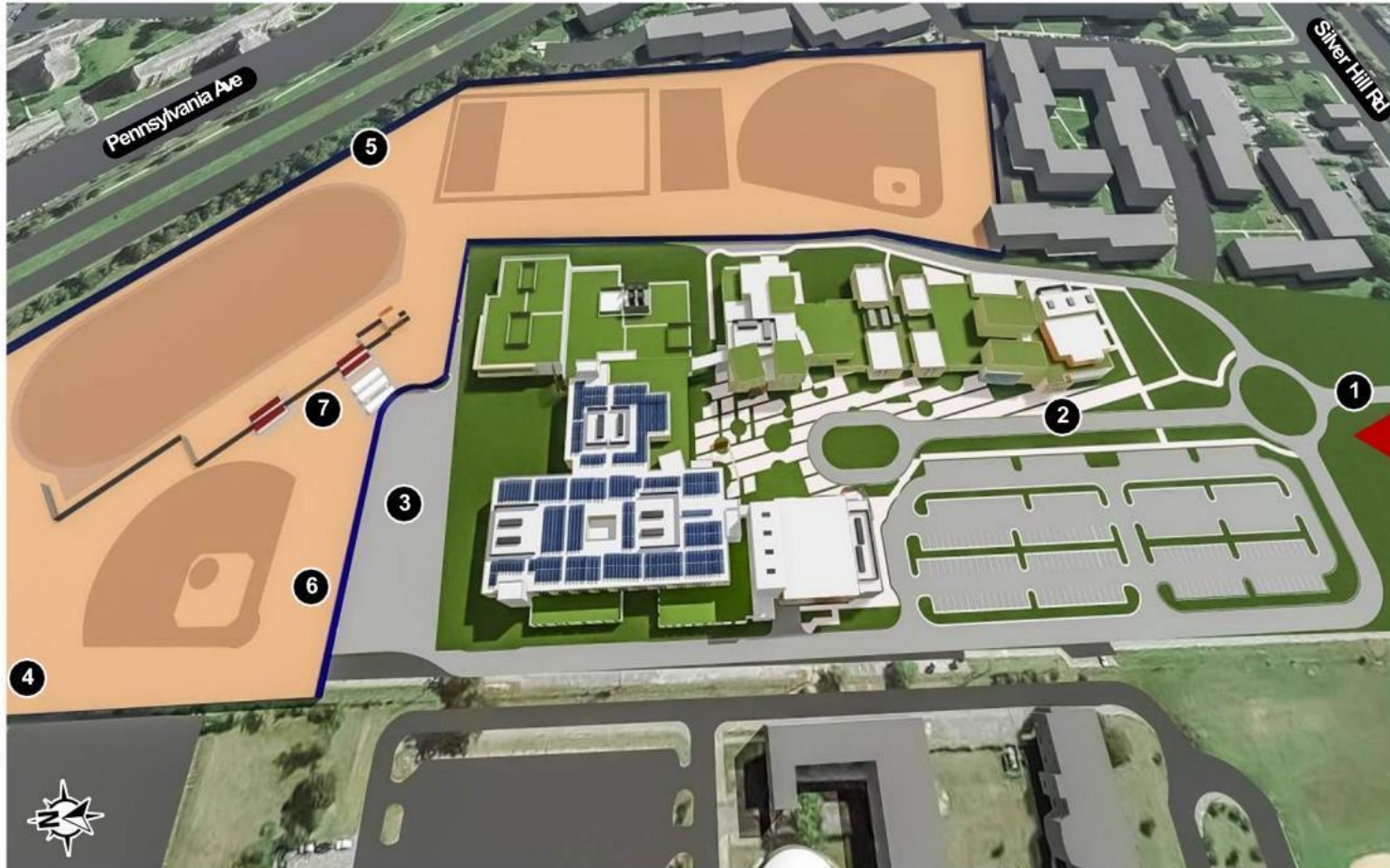
- Start North Side Construction.
- Adjust site fencing to allow demolition of the annex.
- Demo north site and prepare for athletic field work.
- Finalize Phase 2 Building and open south site.

LEGEND

1. School Entrance
2. School Traffic Route
3. Bus Staging Area
4. Construction Entrance
5. Construction Fence
6. Construction Traffic Route
7. Construction Trailers and Construction Parking
8. Abate and Demolish Existing Structure



Construction Overview: Phase III Construction Fields



KEY ACTIVITIES

- Complete Athletic Field Work.
- Flow of work:
 - Football Stadium
 - Baseball field
 - Courts
 - Multipurpose field
 - Softball Field
 - Track & Field
 - North Parking Lot

LEGEND

1. School Entrance
2. School Traffic Route
3. Bus Staging Area
4. Construction Entrance
5. Construction Fence
6. Construction Traffic Route
7. Construction Trailers and Construction Parking



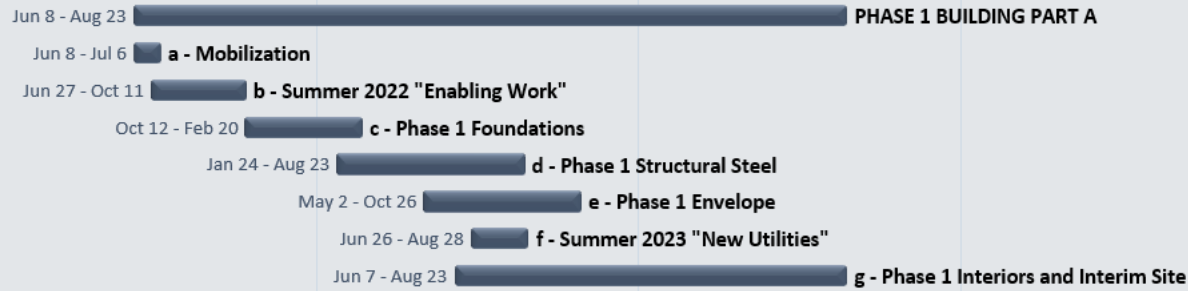
Construction Overview: Construction Schedule

2026



Today

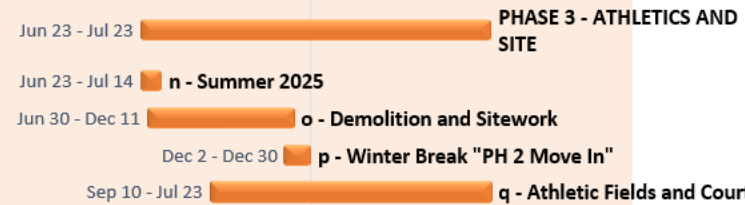
PHASE 1



PHASE 2



PHASE 3



Communications and Engagement

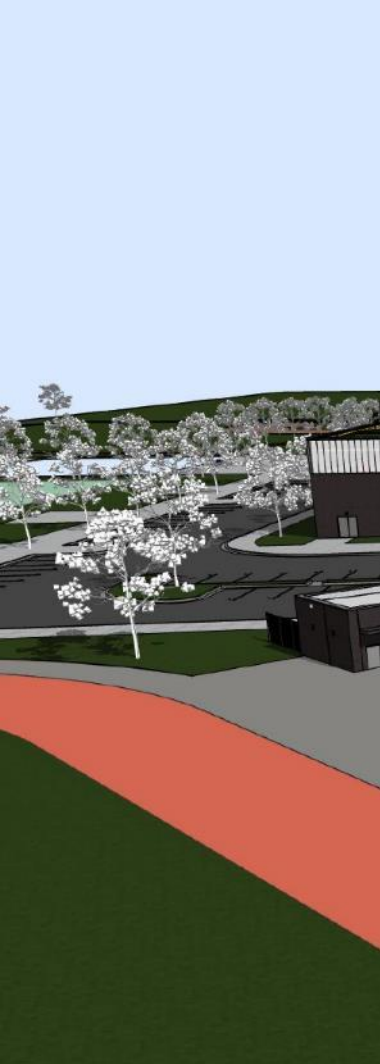


Communications

- Community Meetings: Spring and Fall
- Construction Notifications
- On-site Time Lapse Videos
- Capital Programs Newsletter

Community Engagement

- Subcontractor Outreach
- Student Engagement Opportunities
- Groundbreaking and Topping Out
- Community and Dignitary Tours
- Alumni Outreach and Programming



We want to hear from you.

- Questions and Answers (Q&A)
- Email us at capital.programs@pgcps.org
- Thank you!