

# Prince George's County Public Schools Alternative Construction Finance Program Town Hall

Adelphi Middle School December 17, 2020



español (609) 663-4089

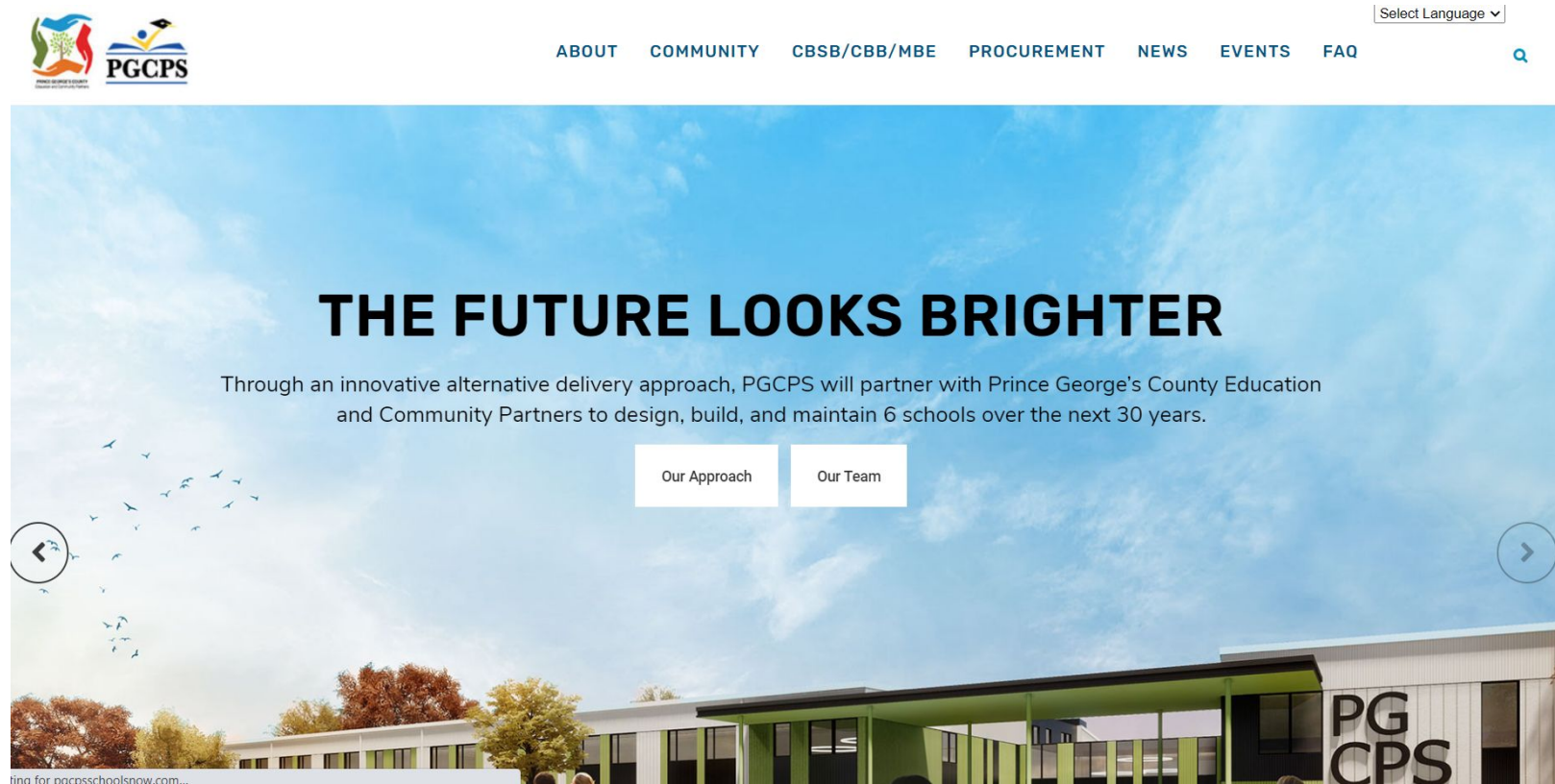


PRINCE GEORGE'S COUNTY  
EDUCATION & COMMUNITY PARTNERS



# Interpretation and Translation

This presentation is being **interpreted LIVE** in **Spanish at (609) 663-4089**. The PowerPoint will be available in Spanish and French on the program website, by December 31<sup>st</sup> at [www.pgcpsschoolsnow.com](http://www.pgcpsschoolsnow.com).



# Town Hall Agenda



español (609) 663-4089

## **1. Introductions & Meeting Logistics**

2. Program Overview
3. Community Engagement Process
4. Community Investment Program
5. Project Overview
6. Project Design
7. Q&A

# Introductions: **Today's Presenters & Panelists**



español (609) 663-4089



**Jason Washington**  
**PGCPS**  
Director of Alternative  
Construction Finance  
Program

Owner



**Karen Summerville**  
**Brailsford & Dunlavey**  
Sr. Communications and  
Public Engagement  
Manager

Program Coordinator



**Michael Ricketts**  
**Gilbane**  
Senior Design-Build  
Executive

Construction



**Yvette Stevens**  
**Gilbane**  
Director of  
Economic Inclusion  
& Community Affairs



**Bill Bradley**  
**Stantec Architecture**  
Principal Architect

Design



**Kathy Dixon**  
**KDA Architects**  
Founder and  
Principal Architect

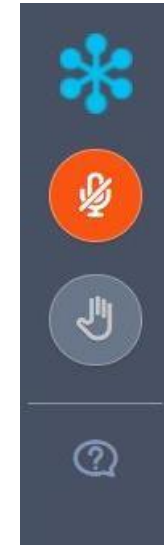




## How to Submit a Question or Comment

At any time during this town hall please submit questions and comments through the **Question function** in your toolbar. Our panelists are able to view what you submit.

It is our goal to address as many questions as possible throughout and at the end of the presentation. All Q&A's will be posted to the program website, [www.pgcpsschoolsnow.com](http://www.pgcpsschoolsnow.com), by December 31<sup>st</sup>.



## How to Participate in Polls

During this meeting, we'll ask you to participate in a few polls. The poll questions will fill your monitor along with an option to select one or two answers.

# Town Hall Agenda



español (609) 663-4089

1. Introductions & Meeting Logistics

**2. Program Overview**

**3. Community Engagement Process**

4. Community Investment Program

5. Project Overview

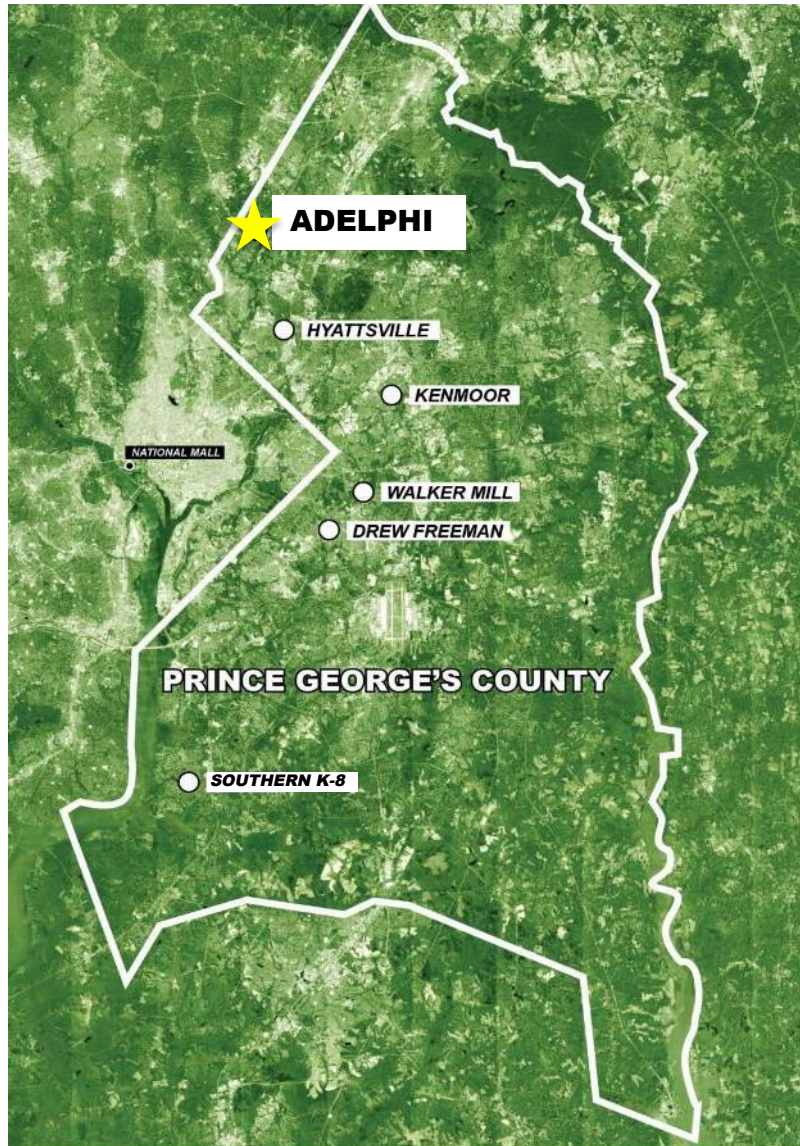
6. Project Design

7. Q&A



## Program Overview: **Background**

---



### **Design-Build-Finance-Maintain (DBFM) Program**

- Six New Schools
  - Five - 1,200 student middle schools
  - One - 2,000 student K-8
- Currently in the Exclusive Negotiation Agreement Period
- 3 Year Design-Build Phase (2020 – 2023)
- 30 Year Building Maintenance Period (2023 – 2053)



# Program Overview: **Community Engagement Process**



## **Town Hall Meetings**

- ✓ On-going town halls provided for each school community.
- ✓ Presentations will include project and community impact updates.
- ✓ Participants' questions are addressed during the meeting; all follow-up materials/additional info is provided on the program website:  
[www.pgcpschoolsnow.com](http://www.pgcpschoolsnow.com)



## **Project Planning Committees (PPC)**

- ✓ PPC teams are representative of individual school communities, selected and led by school principals.
- ✓ PPCs will use their community and school-based expertise to inform design and actively participate in each phase of the design-build period.
- ✓ Feedback loop provides opportunities for PPCs to provide guidance and support the advancement of the school design.



## **Community Investment**

- ✓ PGCECP will provide monthly MBE/CBB outreach and pre-certification events.
- ✓ Community investment opportunities and program updates will be shared at town halls, with the PPCs and on the program website.





# Town Hall Agenda



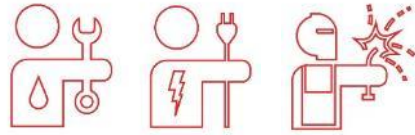
español (609) 663-4089

1. Introductions & Meeting Logistics
2. Program Overview
3. Community Engagement Process
- 4. Community Investment Program**
5. Project Overview
6. Project Design
7. Q&A



# Community Investment Program: **Employment, Business, Educational, Community Service**

---



## **Employment**

Program 'job bank'  
Internships & Apprenticeships



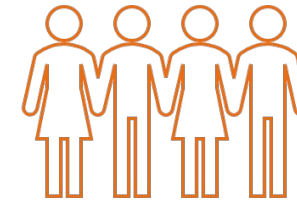
## **Business Opportunities**

MBE/CBB/CBSB Firms  
Mentor-Protégé Program



## **Educational Programs**

Scholarships, ACE Program  
CTE Involvement



## **Community Service**

### **Projects**



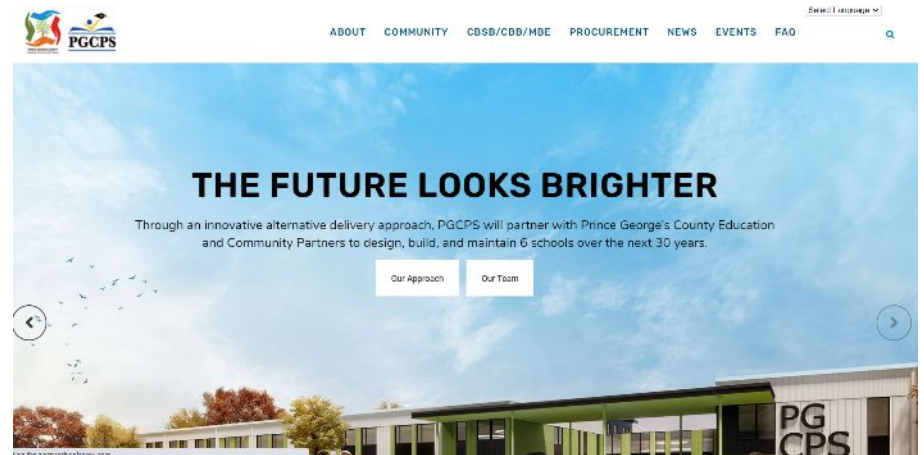
## **CBB/CBSB/MBE Requirements**

- 30% MBE
  - 20% CBB
- Maximize Local Business

## Participation

- Bid package breakdown
- Contractor matchmaking

[www.pgcpsschoolsnow.com](http://www.pgcpsschoolsnow.com)





## Community Investment Program: **Community Services and Amenities**

---



- 'Customized' services/amenities plan for each individual community
- Work with communities & stakeholders to identify desired services/amenities
- Individual school project teams will volunteer time, tools, materials, resources
- Example Services:
  - Food, Clothing, School Supply Drives
  - Habitat for Humanity project
  - Rebuilding Together project



# Town Hall Agenda

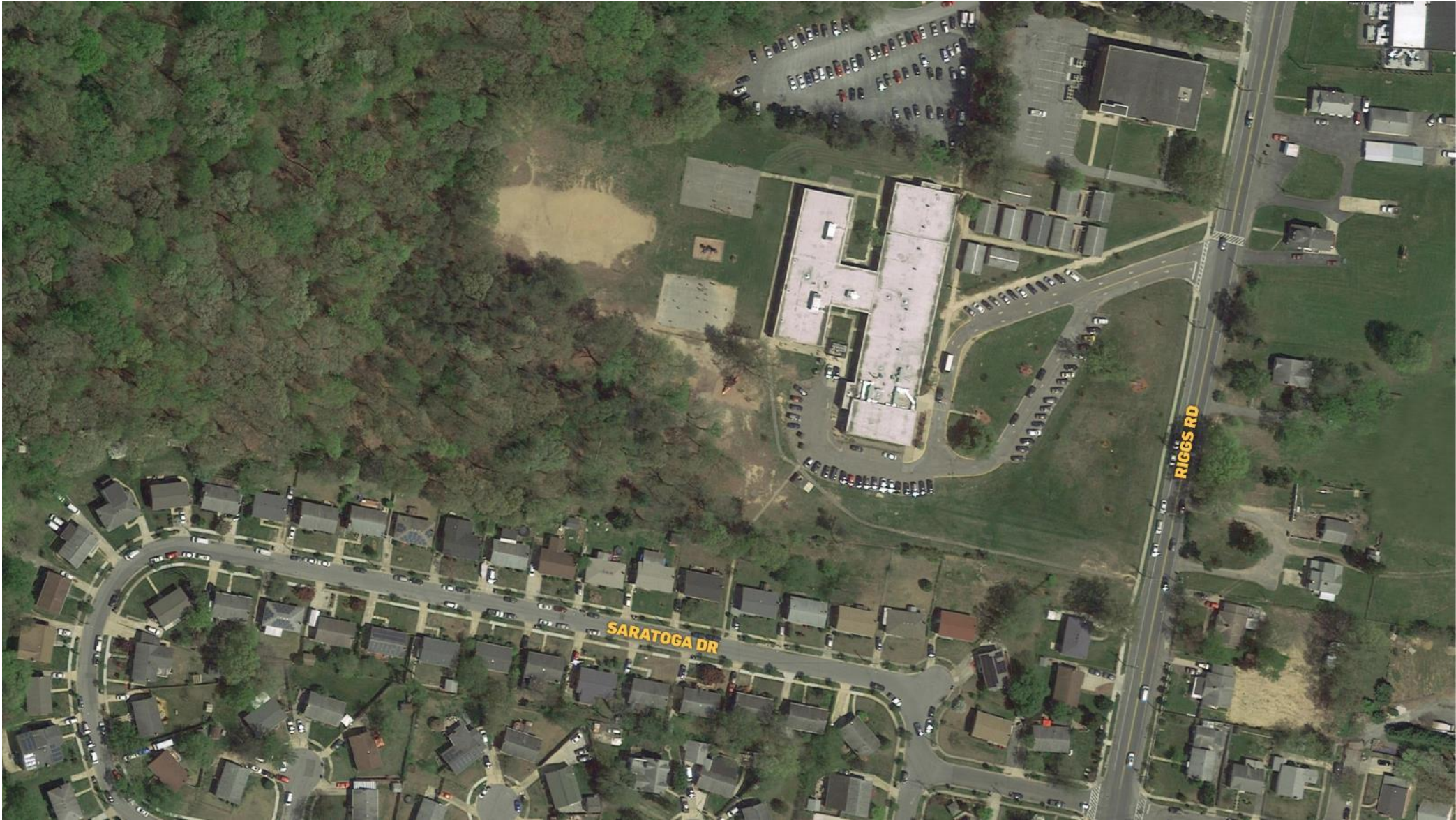


español (609) 663-4089

1. Introductions & Meeting Logistics
2. Program Overview
3. Community Engagement Process
4. Community Investment Program
- 5. Project Overview**
6. Project Design
7. Q&A



# Project Overview: Adelphi





# Town Hall Agenda



español (609) 663-4089

1. Introductions & Meeting Logistics
2. Program Overview
3. Community Engagement Process
4. Community Investment Program
5. Project Overview
- 6. Project Design**
7. Q&A





# Project Design:



## Adelphi Middle School







# Project Design:







# Project Design:







# Project Design:



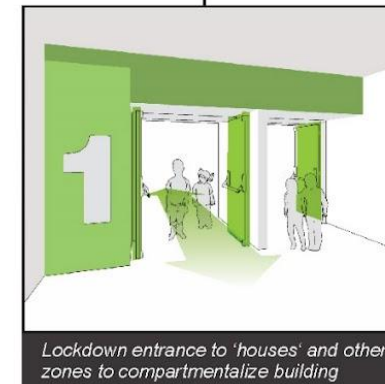
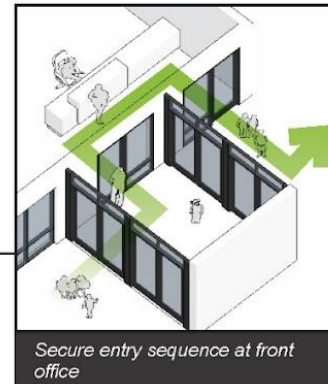
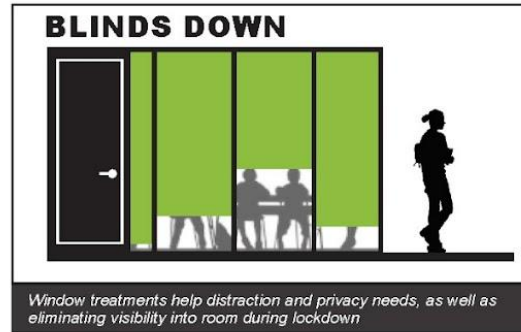
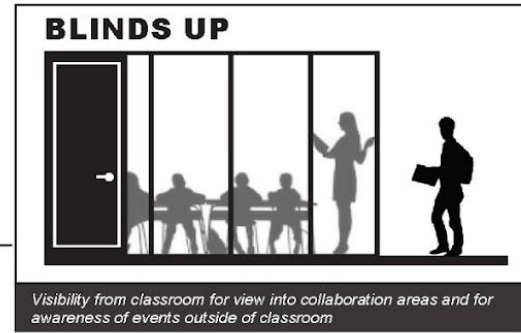
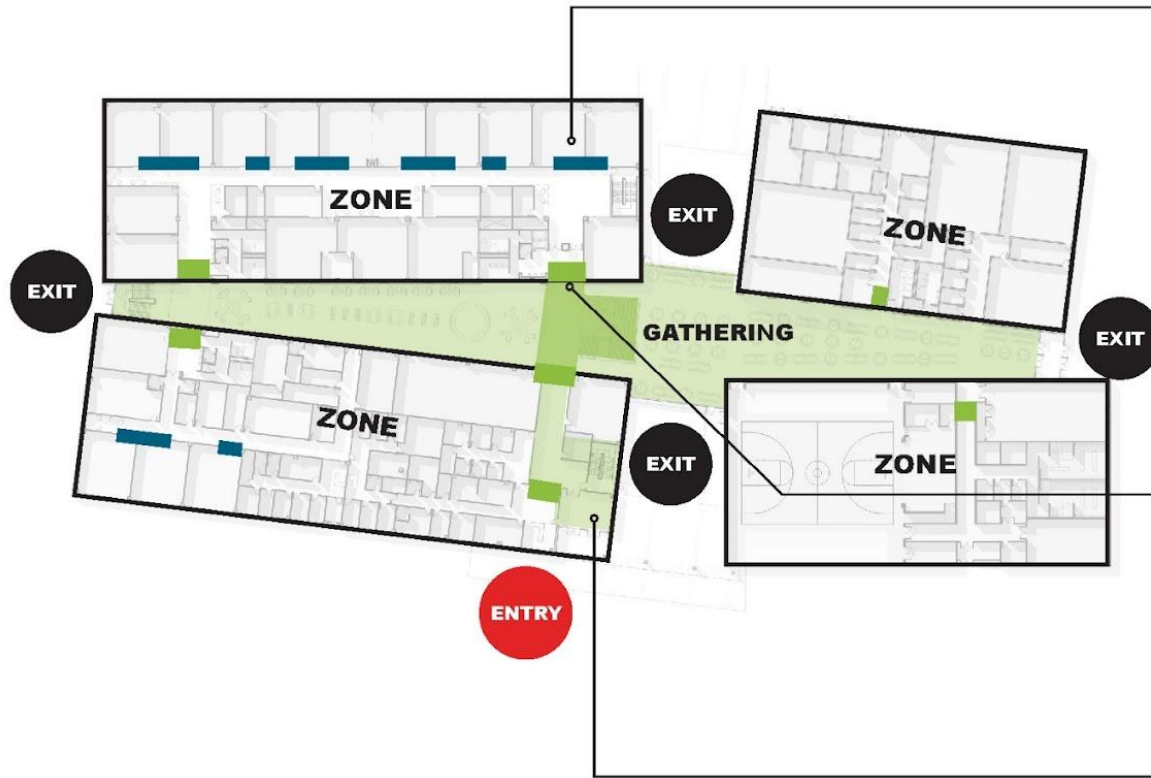




# Project Design:

## SECURITY CONSIDERATIONS

The building has multiple layers of safety and security. The secure vestibule requires visitors to check in with the front office before being granted access to the building. The academic areas can be isolated from more public areas by closing doors at entrances to "houses". Under normal school conditions, the doors to the 'houses' remain in an held-open position for easy circulation and an inviting entrance into each academic area. However, doors to the academic areas can be locked should the need arise without compromising emergency exiting routes. Classroom areas with glazing into collaboration areas are equipped with blinds should the occupants feel the need to obstruct the view into the room.







# Project Design:







# Project Design:







# Project Design:





## Next Steps

---

### Town Halls

- Today's presentation materials and Q&A will be posted by December 31<sup>st</sup> to [www.pgcpsschoolsnow.com](http://www.pgcpsschoolsnow.com) in English, Spanish and French.
- The next town hall meeting will take place in February 2021 (exact date to be announced).

### Project Planning Committees

All school-based PPC design meetings start in January 2021.

### SWING SPACE PLANNING

There will be a Swing Space Town Hall early next Spring to provide logistics around timeline, academic/school program, and transportation.

### **Adelphi's swing space for SY 21-23 is:**

Current Cherokee Lane ES - 9000 25th Ave,  
Adelphi, MD 20783

### PGCPS Boundary Studies

Comprehensive School Boundary Initiative  
Community Conversations:

- Thurs, Jan 7
- Sat, Jan 9 (in Spanish)
- Tues, Jan 12
- Wed, Jan 13

The Boundary Initiative web portal is accessible from:

<https://offices.pgcps.org/schoolboundaries/>



# THANK YOU

Questions: [jason.washington@pgcps.org](mailto:jason.washington@pgcps.org)



PRINCE GEORGE'S COUNTY  
EDUCATION & COMMUNITY PARTNERS