



Creative Collaboration
Sustainable Solutions
Engaging Environments

**Glenridge Middle School
Community Presentation**
October 2019

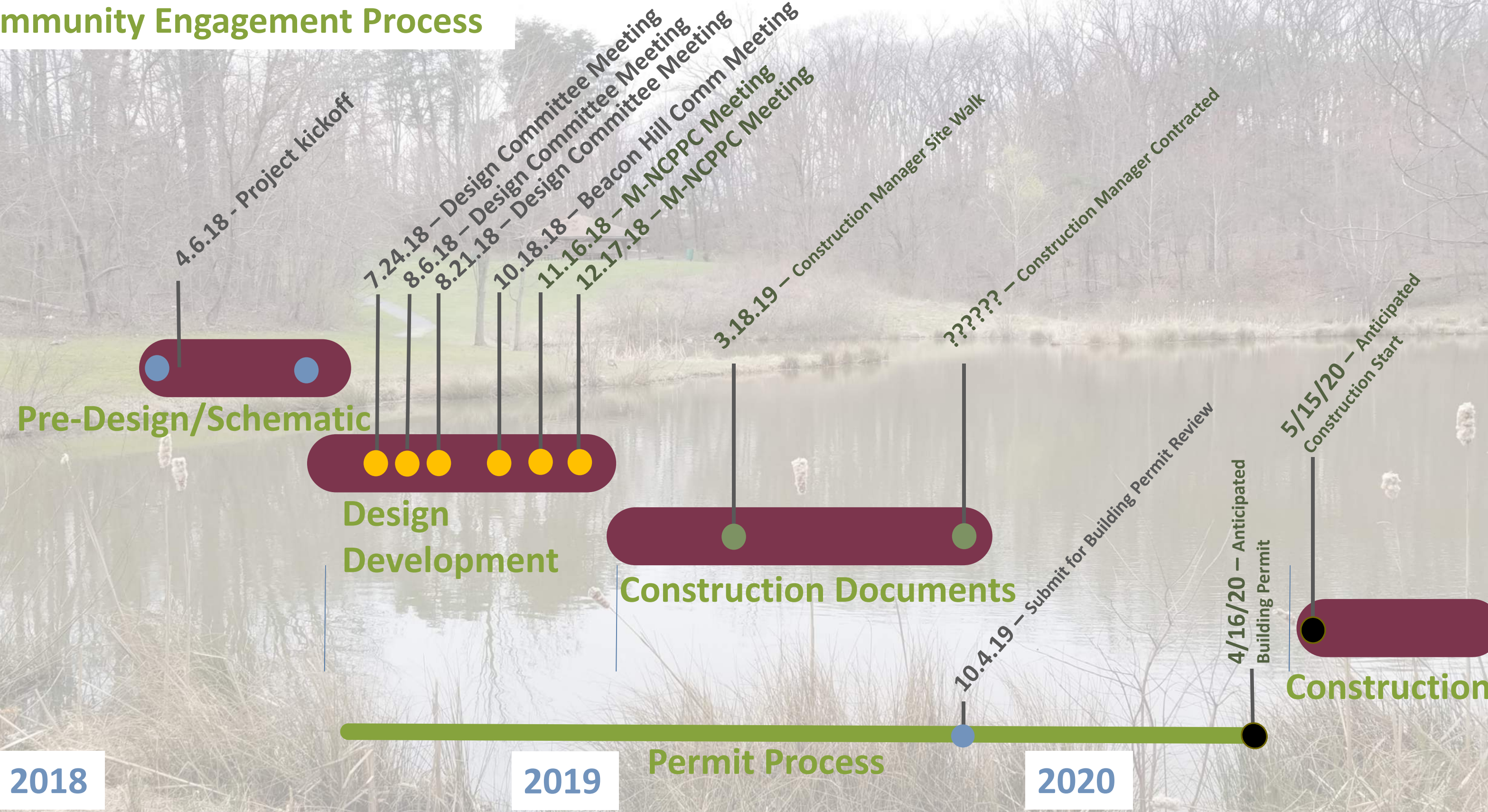
Conceptual Perspectives



Today's Agenda

1. Welcome
2. Review of Community Engagement Process
3. Review of Permitting Progress and Schedule Forward
4. Present Building Design
 - a) Site Plan
 - b) Building Exterior

Community Engagement Process



2018

2019

2020

Permit Process

Community Meetings

Integrate school with the park



Spaces for outdoor learning

Separate entrances for cars + busses



Welcoming approach + entry

Trail connections to the park and fields



Project Goals + Guiding Principles

The new Glenridge Middle School will...

... provide resources and *spaces for students to thrive* and achieve their goals

... become a *community hub* that is open and accessible to its diverse neighborhood

... integrate with its Glenridge Park setting and *connect with nature*

... be *welcoming and inviting to all* students, parents, staff and neighbors

... enhance a *sense of pride* in the community

... be a *school in the park*

Site Plan

Pedestrian Access
Flintridge Entrance
Gallatin Entrance
Greenland Street

Bus Entrance
Flintridge Drive

Car Entrance
Gallatin Street

SOCCER /
MULTIPURPOSE
FIELD

BASKETBALL

PEDESTRIAN
ACCESS

STAFF
PARKING

SERVICE
COURTYARD

GYM

CAFETERIA /
LIBRARY

CLASSROOM
BAR

BUS LOOP

PARENT DROP OFF

VISITOR
PARKING

FLINTRIDGE
BUS ACCESS

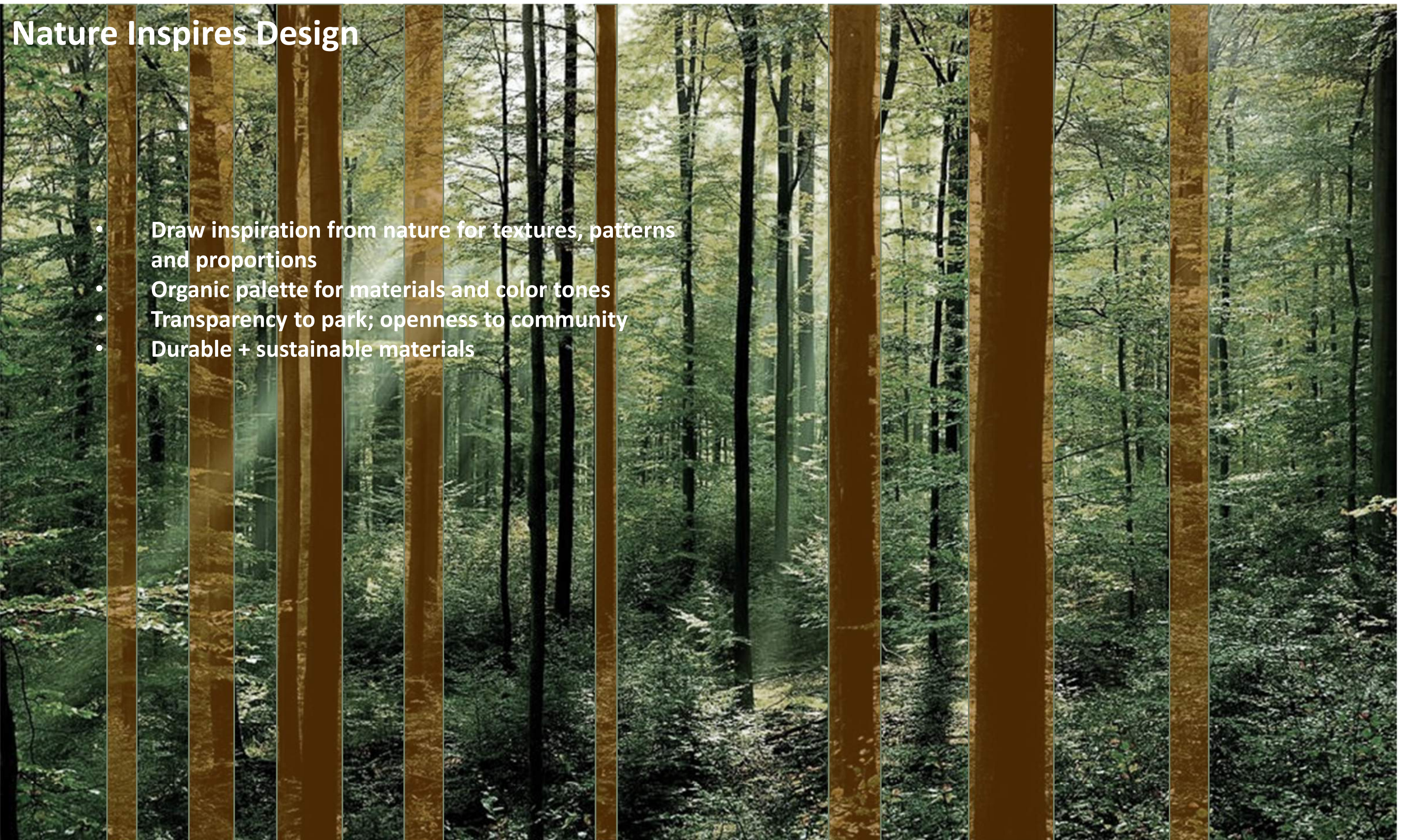
GALLATIN - CAR ACCESS

PARK AND OVERFLOW PARKING

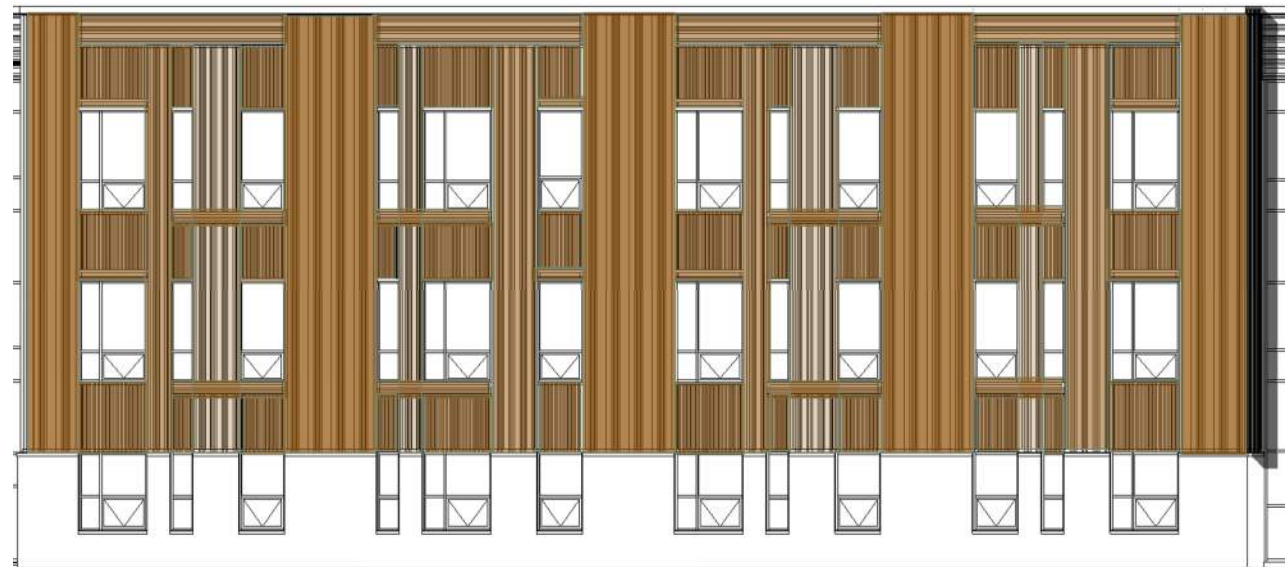
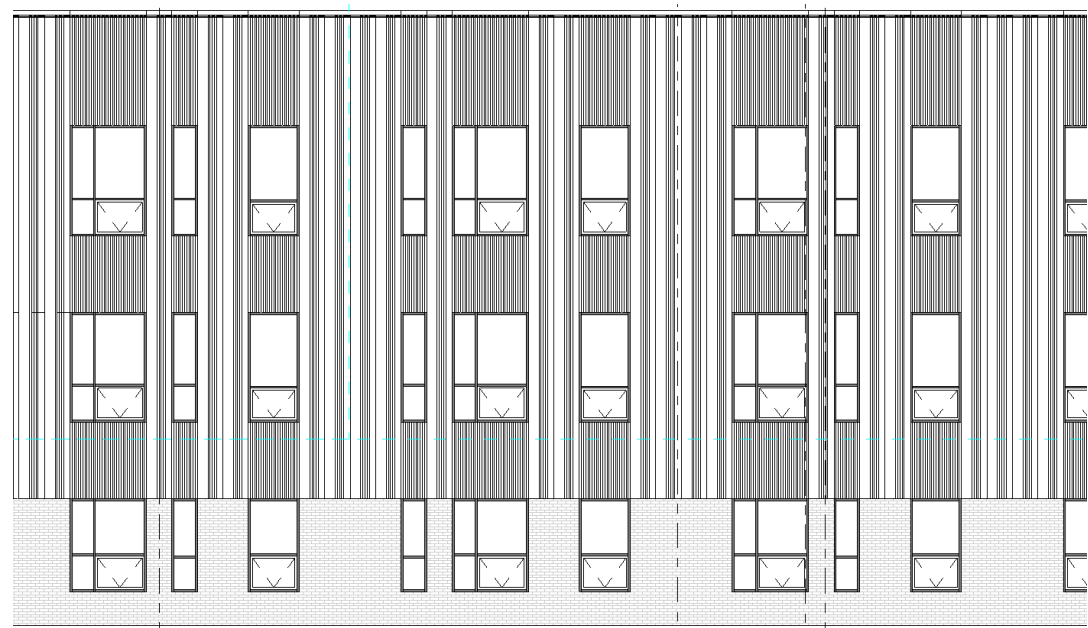


Nature Inspires Design

- Draw inspiration from nature for textures, patterns and proportions
- Organic palette for materials and color tones
- Transparency to park; openness to community
- Durable + sustainable materials



Iterative Process
Develops Design



The School in the Park



The School in the Park



The School in the Park



South Classroom Bar



Commons View



North Courtyard



Commons View





Commons View

