



Creative Collaboration
Sustainable Solutions
Engaging Environments

**Glenridge Middle School
Community Meeting**

July 10, 2018



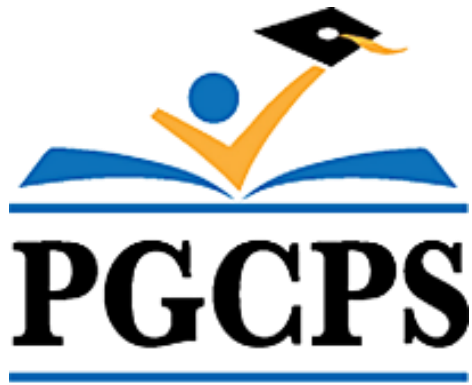
Today's Agenda

1. Welcome, Intro
2. Schedule
3. Project Scope
4. Site Observations
5. Middle School Design
6. Engagement

Q+A

Project Team

Owner



Architect



Consultants

Associate Architect

Waldon Studio Architects

Geotech | Environmental

Geotech Inc.

Civil | Survey Engineering

Adtek Engineers, Inc.

Landscape Architecture

Bradley Site Design

Mechanical | Electrical

CMTA Consulting Engineers

Cost Estimate

MK Consulting

Plumbing | Fire Protection

KES Engineering

Sustainable Design

Sustainable Design Consulting

Structural

Columbia Engineering, Inc.

Kitchen

Nyikos Associates

AV | IT | Acoustics

Polysonics

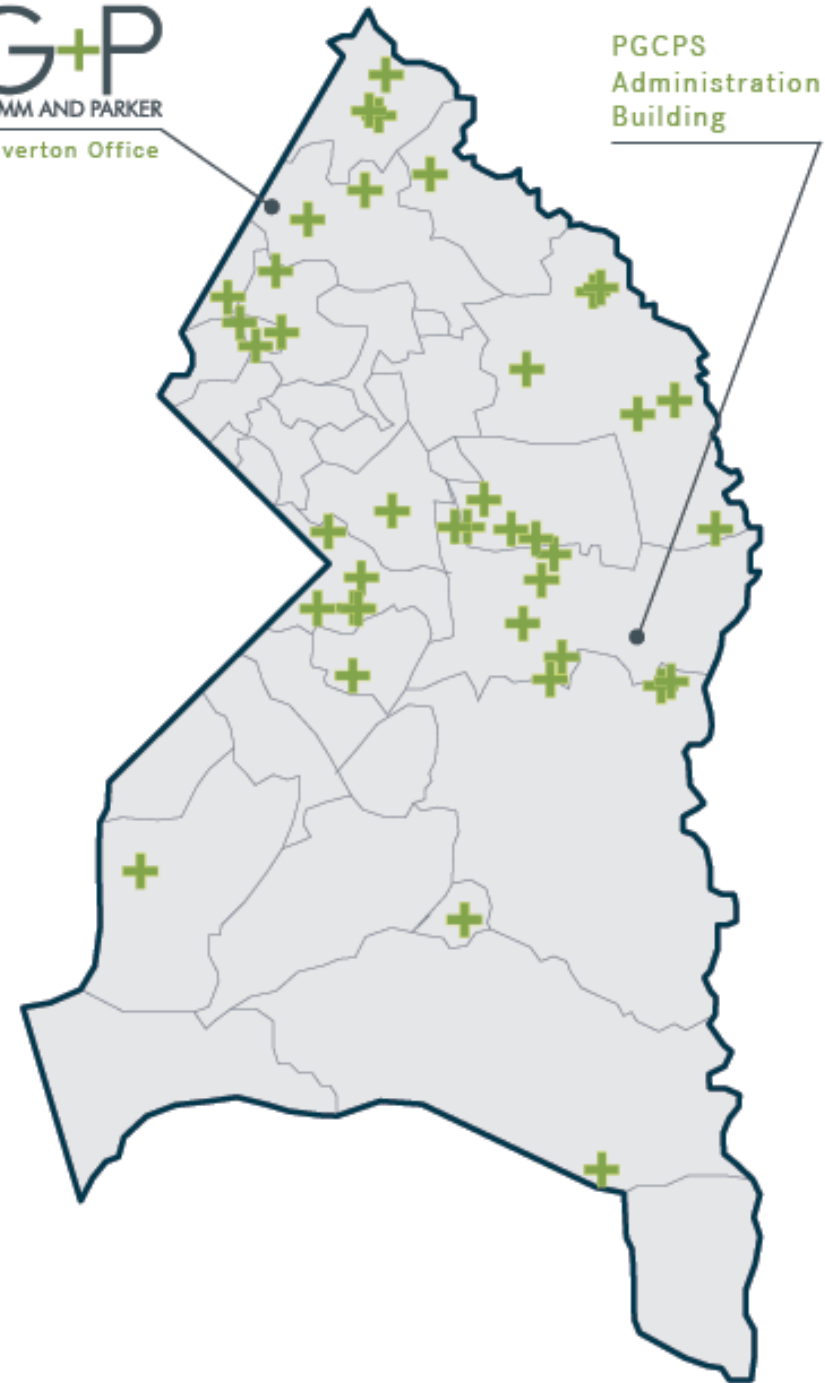
Traffic Consultant

O.R.George & Associates, Inc.

Experience with PGCPS



- Barack Obama Elementary School
- Benjamin Stoddert MS
- Brandywine ES
- Buck Lodge MS
- Chapel Oaks ES
- Charles Herbert Flowers High School
- Cool Spring ES
- District Heights ES
- Dr. Henry Wise High School
- Dr. Ernest Everett Just MS
- Fairmont Heights High School
- Fairwood Elementary School
- Forestville Senior HS
- Friendly Area HS
- Glenridge MS
- Hollywood Elementary School
- Indian Queen Elementary School
- International High School
- Lake Arbor ES
- Largo High School
- Mary Harris "Mother" Jones Elementary School
- Northview Elementary School
- Paint Branch Elementary School
- Perrywood Community Park
- Port Towns Elementary
- Rosaryville ES
- Sub Region 6 Master Plan + Elementary School
- Suitland HS
- Suitland High School CVPA
- Vansville Elementary School
- William Schmidt Outdoor Education Center
- William Wirt Middle School

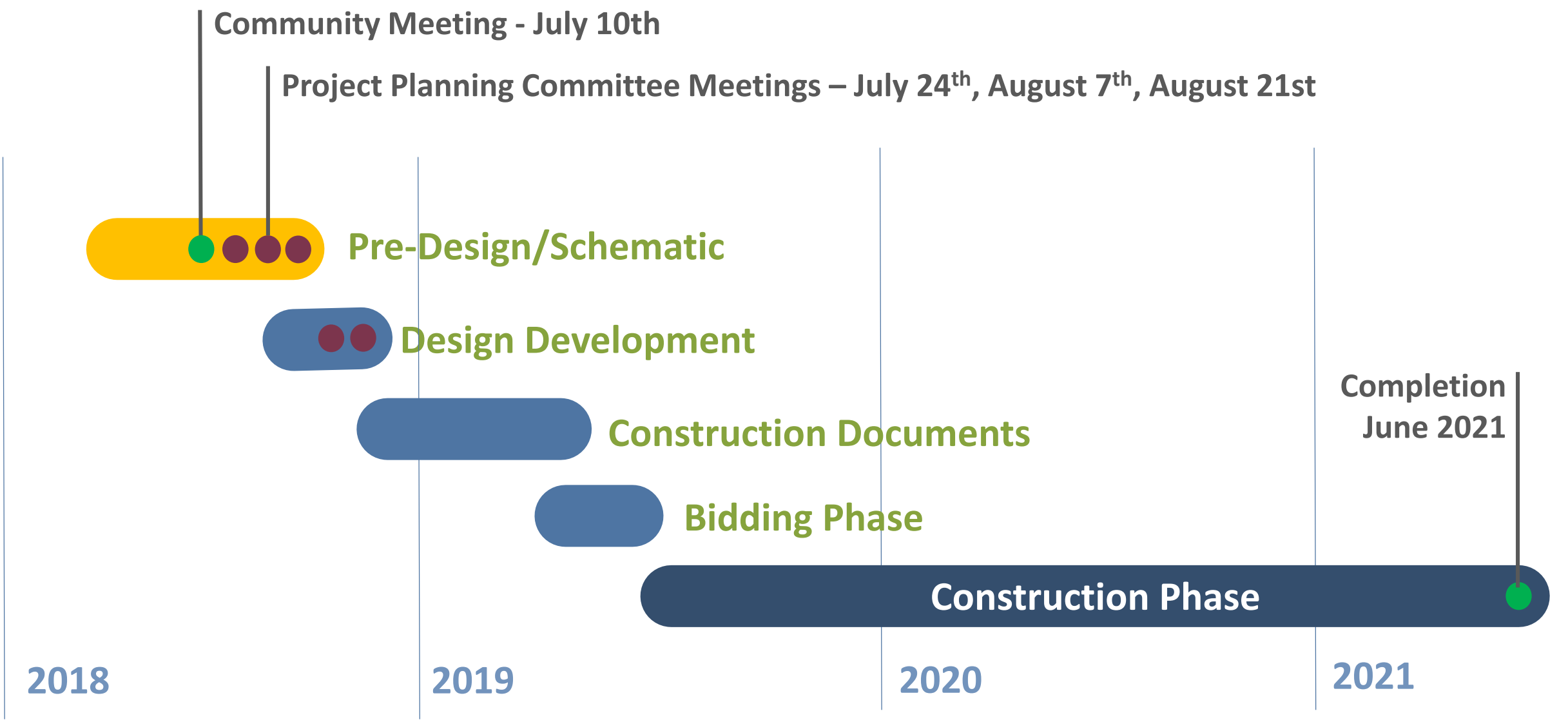


Middle School Experience

Avalon School	Lakelands Park MS
Benjamin Stoddert MS	Langley Education Campus
Brookland MS	Lois S. Hornsby MS
Brooklyn Park MS	Loyola Blakefield
Clarksburg Damascus MS	Norwood MS
Connelly School of the Holy Child	Poolesville MS
Eastern MS	Queen Anne's School
Ernest Everett Just MS	Ridgeview MS
Esperanza MS	Riverdale Baptist School
Francis L. Cardozo MS	Rocky Hill MS
Ft. Worthington ES/MS	Salisbury MS
Graceland Park – O'Donnell Heights ES/MS	Silver Spring International ES/MS
Hallie Wells MS	Southerland MS
Havre de Grace MS/HS	Southern MS
Holabird ES/MS	Stephen Decatur MS
John Philip Sousa MS	Takoma Park MS
Kenmore MS	Washington Christian Academy
Key MS	Waverly ES/MS
Kramer MS	William Wirt MS Feasibility
	Windsor Mill



Project Schedule



Project Schedule

Activities Underway

Site Research
Boundary and Topo Survey
Wetlands Survey
Site Analysis
Program Verification
Departmental Meetings
Program Adjacencies



Coming Soon

Community Engagement
Workshops
Site Diagrams
Conceptual Studies
Building Imagery + Character
Sustainability Goals
Building Systems Research



Project Scope

Adelphi Middle School Site



Two New 1200-Seat Middle Schools

- with associated site development and amenities in Prince George's County, Maryland

Budget: \$60,000,000 each

- For site and building

New Glenridge Area Middle School

- Proposed on the Glenridge Community Park site.
- Adjacent to Glenridge Elementary School

New Adelphi Area Middle School

- Proposed on the current site of Mary Harris "Mother" Jones Elementary School.

Challenging Sites

- Approximately 100 feet of vertical drop on each site
- Streams with environmental setbacks, existing storm water management ponds and wetlands

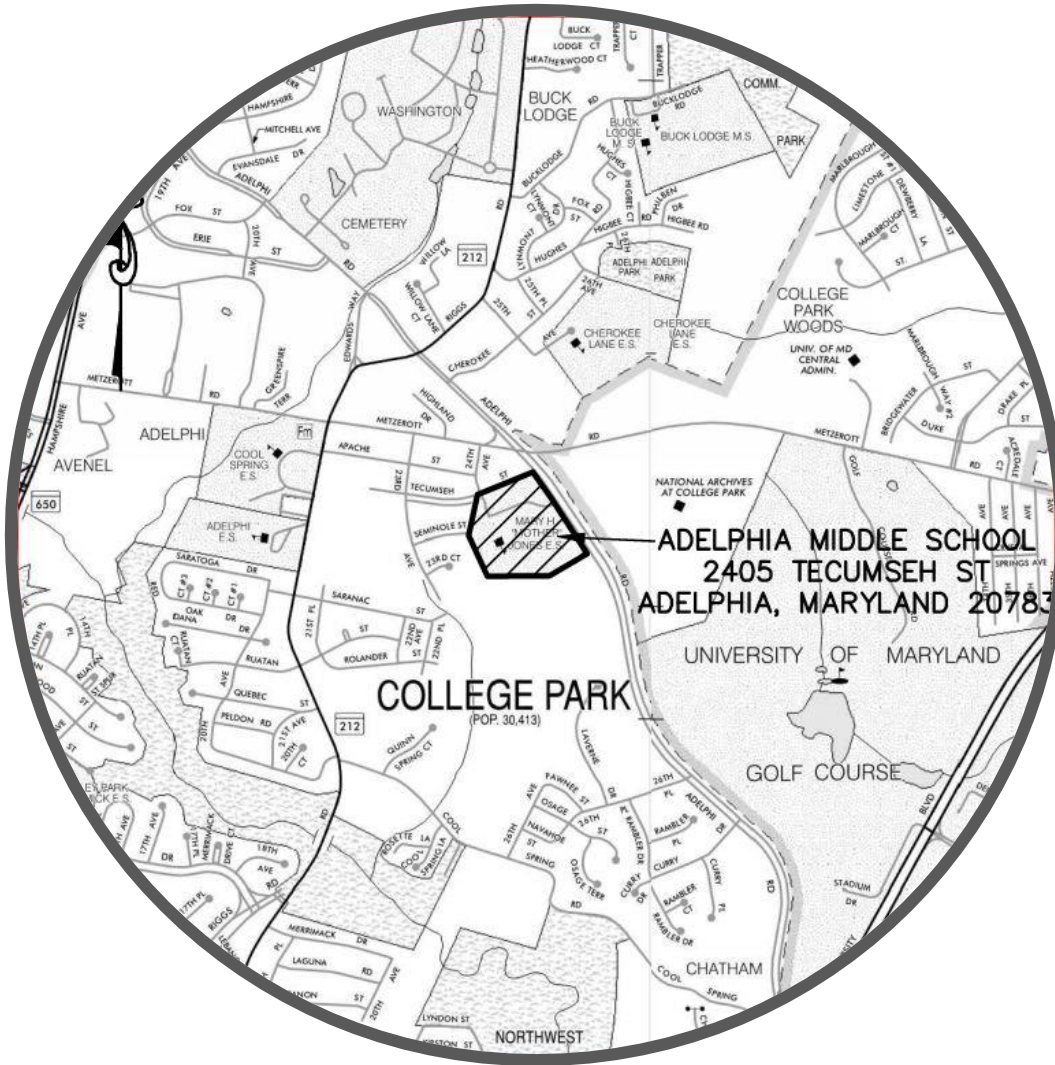
Unique Special Education Components

- Regional Program for students with intense needs proposed at Adelphi
- Program for students with special emotional support needs proposed at Glenridge

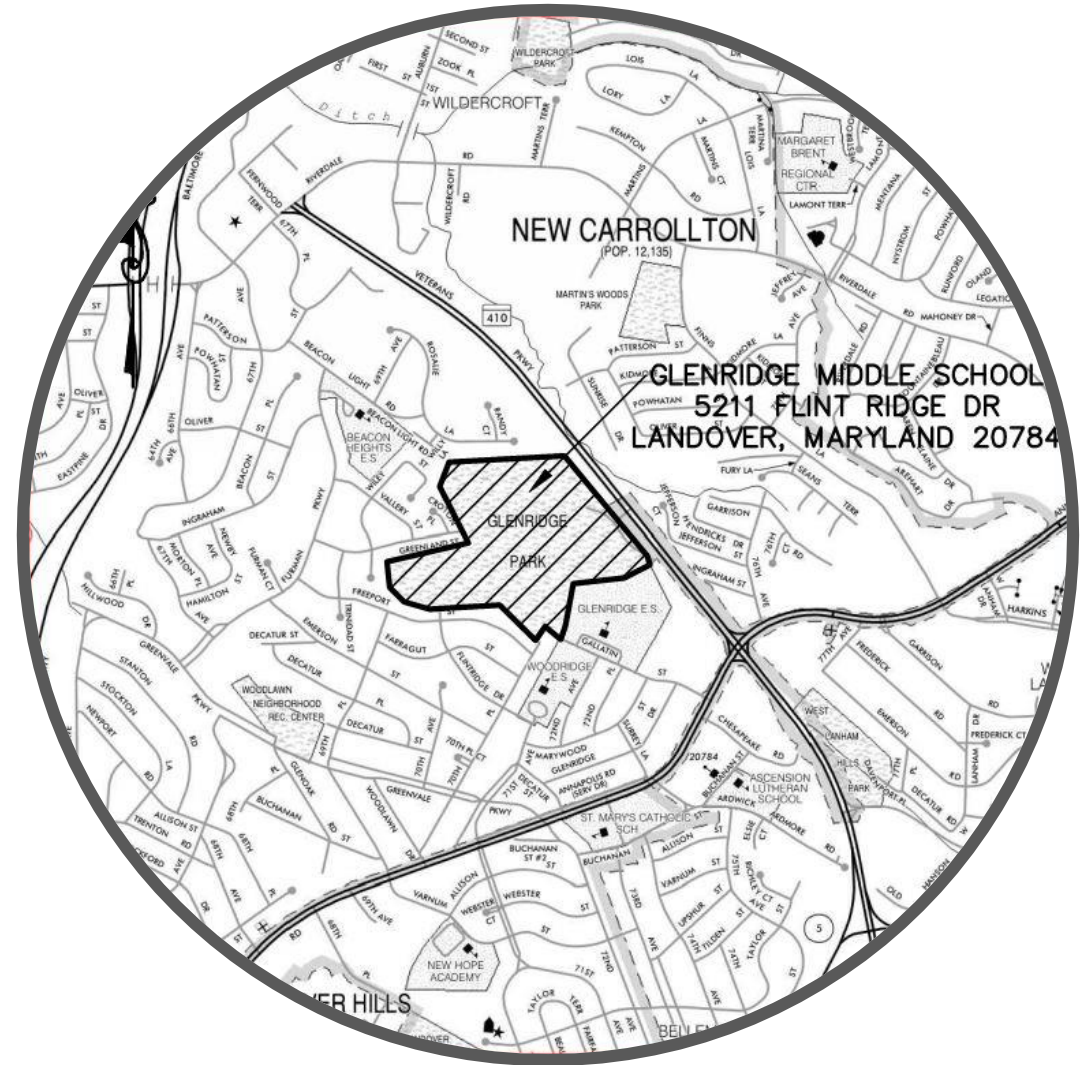
Glenridge Middle School Site



2 New Middle Schools for PGCPS



Adelphi Middle School
Proposed Site



Glenridge Middle School
Proposed Site

Glenridge Site

Existing Conditions

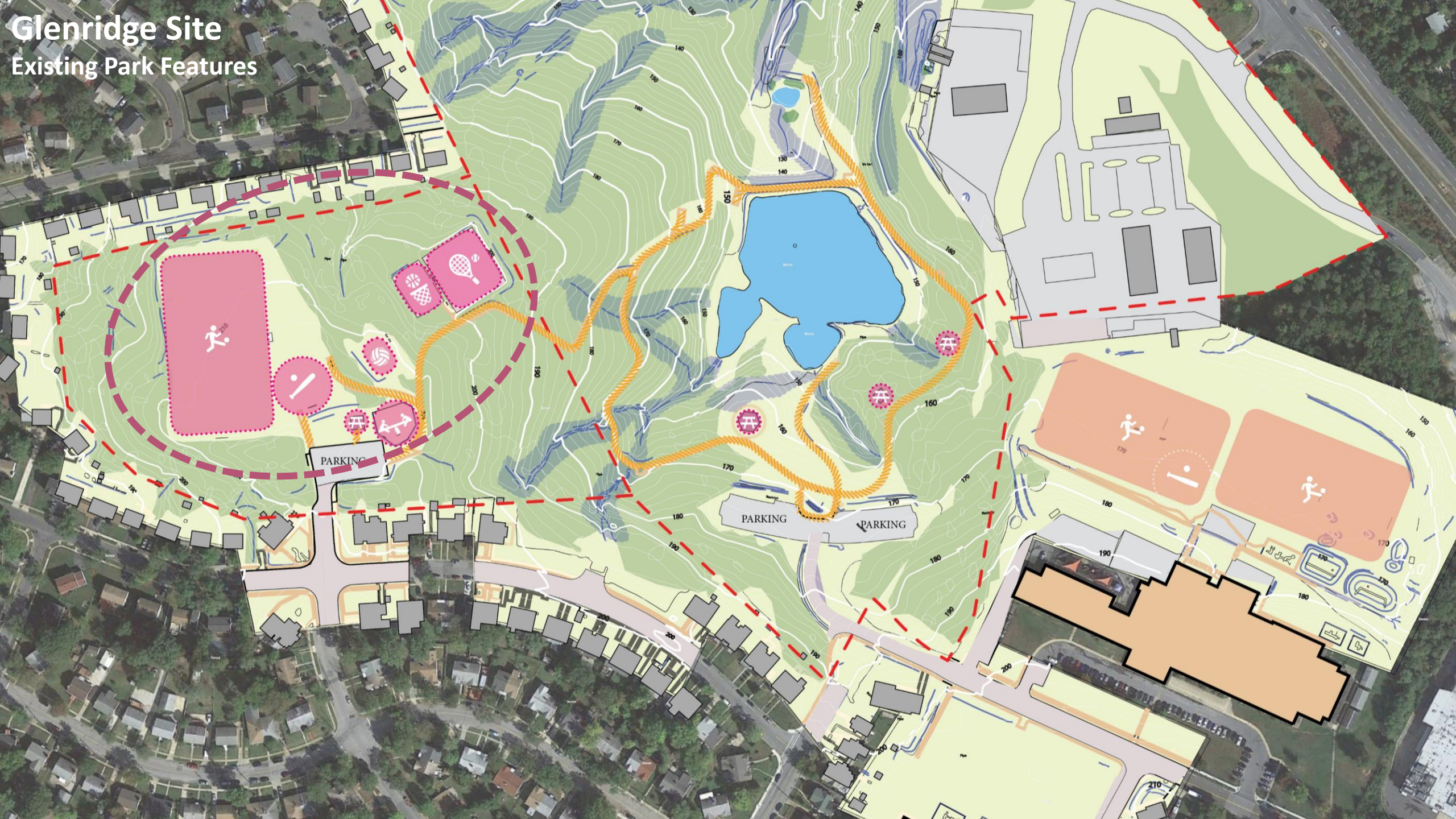
LEGEND

- PROPERTY LINE 
- BASKETBALL/TENNIS 
- PLAYING FIELD 
- ROADS 
- WALK PATHS 
- WATER 
- EXISTING BUILDING 
- TREES 
- SITE ENTRY 



Glenridge Site

Existing Park Features



Glenridge Site

Existing Conditions

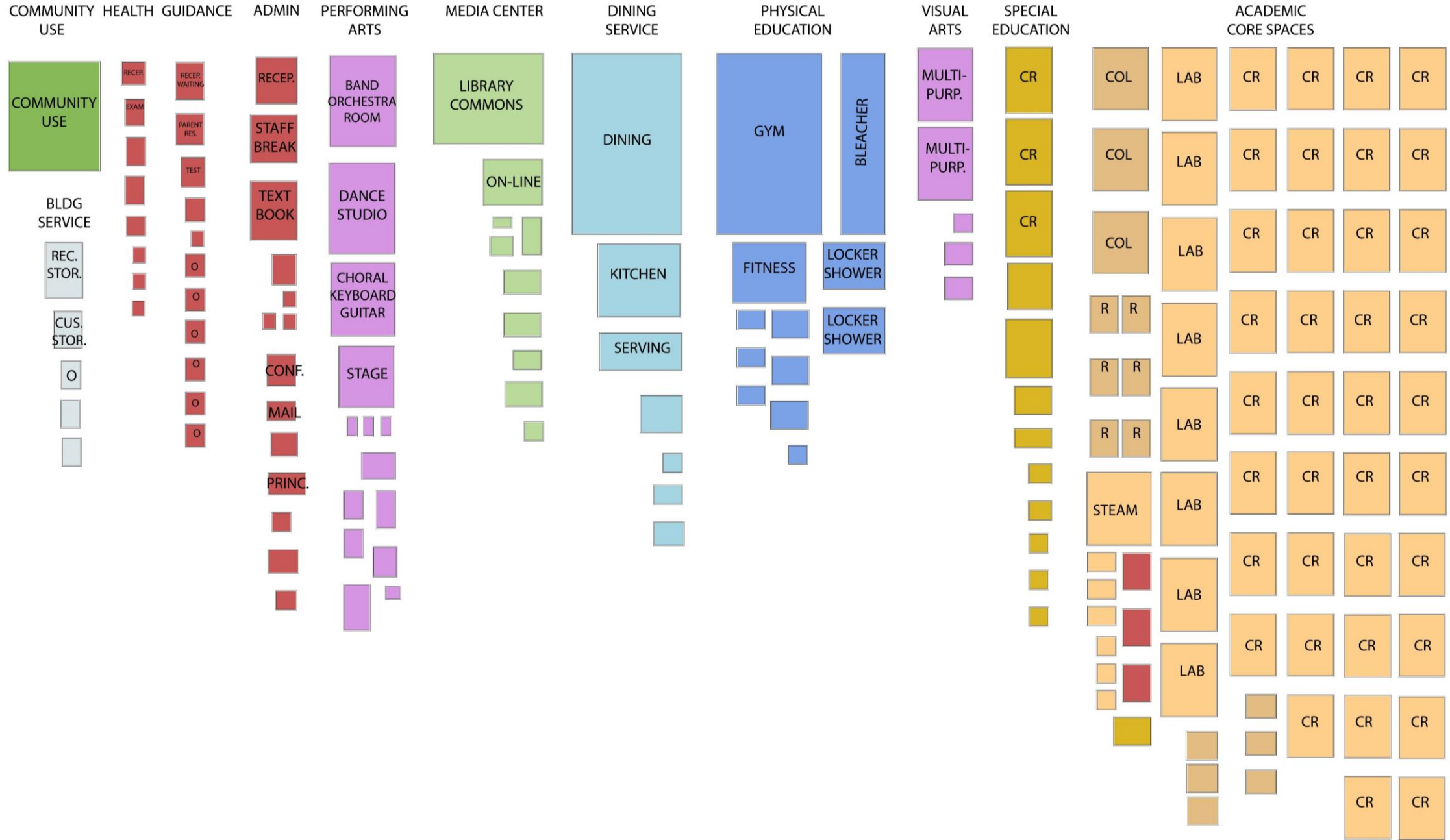


Glenridge Site

Existing Conditions



Middle School Program



Design for Middle Schools Students

Change + transition are constant

Critical stages of development:

- **Cognitive**
- **Physical**
- **Social**
- **Emotional**

Ever-present transitions

ES -> MS -> HS



Design focused on supporting each MS student's growth and success

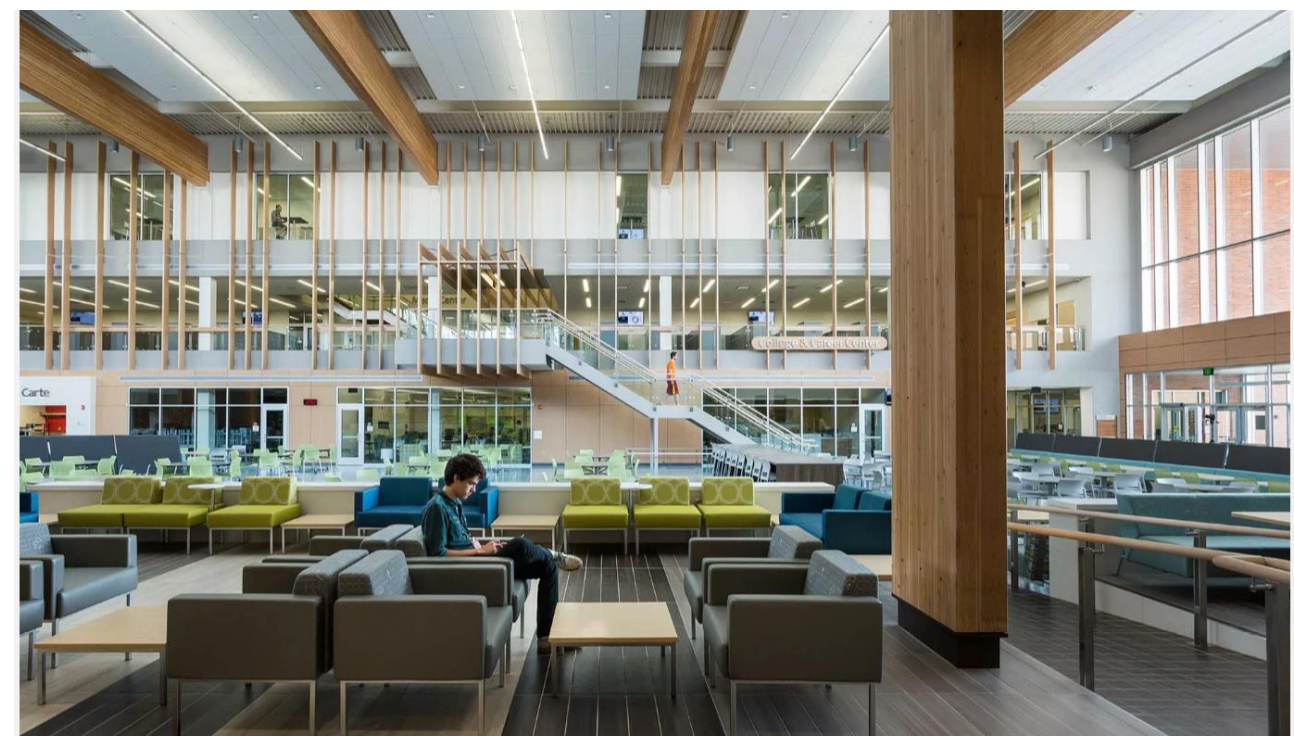
Spaces to Create



Spaces to Collaborate



Spaces to Think



Spaces to Gather



Spaces for Outdoor Learning



Sustainable Design

AIA **2030**
AIA 2030
COMMITMENT
SIGNATORY

10M⁺
SQUARE FEET OF
CERTIFIED GREEN
PROJECTS

85⁺
ENERGY STAR
RATED
PROJECTS

45⁺
LEED
ACCREDITED
PROFESSIONALS

9 
GREEN APPLE
DAY OF
SERVICE
EVENTS

45⁺
LEED
CERTIFIED
PROJECTS IN
PROCESS

58
LEED
CERTIFIED
PROJECTS
COMPLETED

20⁺
ENTERPRISE
GREEN
COMMUNITIES
PROJECTS



2⁺
NET-ZERO
SCHOOLS IN
DESIGN

**Sustainable
architecture
creates
sustainable futures.**

Sustainable Design



Building + Site =
Teaching Tool!



LEED v4 for BD+C: Schools Project Checklist

Y ? N

Credit Integrative Process 1

0 0 0 Location and Transportation 15

	Credit	LEED for Neighborhood Development Location	15
	Credit	Sensitive Land Protection	1
	Credit	High Priority Site	2
	Credit	Surrounding Density and Diverse Uses	5
	Credit	Access to Quality Transit	4
	Credit	Bicycle Facilities	1
	Credit	Reduced Parking Footprint	1
	Credit	Green Vehicles	1

0 0 0 Sustainable Sites 12

	Prereq	Construction Activity Pollution Prevention	Required
	Prereq	Environmental Site Assessment	Required
	Credit	Site Assessment	1
	Credit	Site Development - Protect or Restore Habitat	2
	Credit	Open Space	1
	Credit	Rainwater Management	3
	Credit	Heat Island Reduction	2
	Credit	Light Pollution Reduction	1
	Credit	Site Master Plan	1
	Credit	Joint Use of Facilities	1

0 0 0 Water Efficiency 12

	Prereq	Outdoor Water Use Reduction	Required
	Prereq	Indoor Water Use Reduction	Required
	Prereq	Building-Level Water Metering	Required
	Credit	Outdoor Water Use Reduction	2
	Credit	Indoor Water Use Reduction	7
	Credit	Cooling Tower Water Use	2
	Credit	Water Metering	1

0 0 0 Energy and Atmosphere 31

	Prereq	Fundamental Commissioning and Verification	Required
	Prereq	Minimum Energy Performance	Required
	Prereq	Building-Level Energy Metering	Required
	Prereq	Fundamental Refrigerant Management	Required
	Credit	Enhanced Commissioning	6
	Credit	Optimize Energy Performance	16
	Credit	Advanced Energy Metering	1
	Credit	Demand Response	2
	Credit	Renewable Energy Production	3
	Credit	Enhanced Refrigerant Management	1
	Credit	Green Power and Carbon Offsets	2

Project Name:
Date:

0 0 0 Materials and Resources 13

	Prereq	Storage and Collection of Recyclables	Required
	Prereq	Construction and Demolition Waste Management Planning	Required
	Credit	Building Life-Cycle Impact Reduction	5
	Credit	Building Product Disclosure and Optimization - Environmental Product Declarations	2
	Credit	Building Product Disclosure and Optimization - Sourcing of Raw Materials	2
	Credit	Building Product Disclosure and Optimization - Material Ingredients	2
	Credit	Construction and Demolition Waste Management	2

0 0 0 Indoor Environmental Quality 16

	Prereq	Minimum Indoor Air Quality Performance	Required
	Prereq	Environmental Tobacco Smoke Control	Required
	Prereq	Minimum Acoustic Performance	Required
	Credit	Enhanced Indoor Air Quality Strategies	2
	Credit	Low-Emitting Materials	3
	Credit	Construction Indoor Air Quality Management Plan	1
	Credit	Indoor Air Quality Assessment	2
	Credit	Thermal Comfort	1
	Credit	Interior Lighting	2
	Credit	Daylight	3
	Credit	Quality Views	1
	Credit	Acoustic Performance	1

0 0 0 Innovation 6

	Credit	Innovation	5
	Credit	LEED Accredited Professional	1

0 0 0 Regional Priority 4

	Credit	Regional Priority: Specific Credit	1
	Credit	Regional Priority: Specific Credit	1
	Credit	Regional Priority: Specific Credit	1
	Credit	Regional Priority: Specific Credit	1

0 0 0 TOTALS Possible Points: 110

Certified: 40 to 49 points, Silver: 50 to 59 points, Gold: 60 to 79 points, Platinum: 80 to 110

Stakeholder Engagement



*What one thing
would make your
new middle
school a success?*

Stakeholder Engagement



What is unique about your community that should be considered in this project?

Stakeholder Engagement



How can this new middle school help to enhance your community?

A serene landscape featuring a calm pond in the foreground, surrounded by tall reeds and grasses. In the background, a wooden gazebo is visible on a grassy area, with a dense line of trees behind it. The scene is captured in a soft, slightly desaturated light, suggesting an overcast day.

Q+A

Any questions?