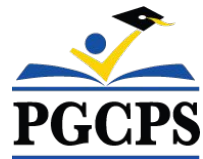




PGCPS . **ENGAGE . DESIGN . BUILD . COMMUNICATE** . PGCPS



HYATTSVILLE MIDDLE SCHOOL

CONSTRUCTION UPDATE MEETING | MAY 8th, 7:00 PM



PRINCE GEORGE'S COUNTY
EDUCATION & COMMUNITY PARTNERS

SERVICIOS DE INTERPRETACIÓN *INTERPRETING SERVICES*

La interpretación simultánea
está disponible en español.
*Simultaneous interpretation is
available in Spanish.*



SERVICIOS DE INTERPRETACIÓN

INTERPRETING SERVICES



On a computer-- At the bottom of the screen will be an interpretation globe. Click that globe and then select *Spanish*.

En una computadora-- En la parte baja de la pantalla habrá un globo de interpretación. Haga clic en ese globo y seleccione "Spanish."



On a mobile device-- At the bottom of the screen, tap the ellipses icon on the bottom right (...).

- Tap *Language Interpretation*.
- Tap *Spanish*.

En un dispositivo móvil-- En la parte baja de la pantalla, toca el icono de elipses en la parte baja derecha (...).

- Toque *Language Interpretation*.
- Toque *Spanish*.



We value your input.

- Please type your questions/comments in the Q&A area of Zoom.
- Questions and answers from this town hall will be posted on pgcpsblueprintschools.com.



Our Commitment

PGCPS is moving swiftly to deliver safe, state-of-the-art, and sustainable learning environments for our students, teachers, and communities.

Through a three-pronged approach - the traditional Capital Improvement Program, Staged Renovations, and the nation's first Public School bundled schools approach, otherwise known as the Blueprint Schools Program - we're on track to deliver over 25 modernized school facilities in just 10 years.



Agenda

- Team Introductions
- Construction Overview
- Operations Update
- Q&A

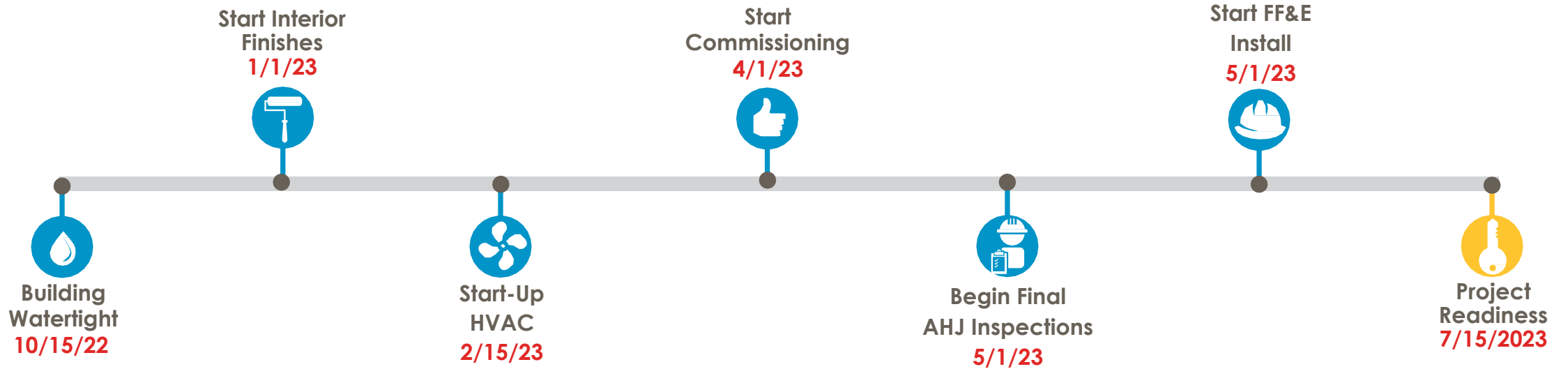


Team Introductions

- **Jason Washington**, *Director, Blueprint Schools*
- **Arland Knipe**, *Project Executive, Gilbane Building Co.*
- **Chelsea Beacom**, *Project Manager, Gilbane Building Co.*
- **Cheri Vincent**, *Senior Project Manager, Brailsford & Dunlavey*
- **Jose Lopez**, *Project Manager, Brailsford & Dunlavey*
- **Chanita Stamper**, *Principal, Hyattsville Middle School*



Construction Overview



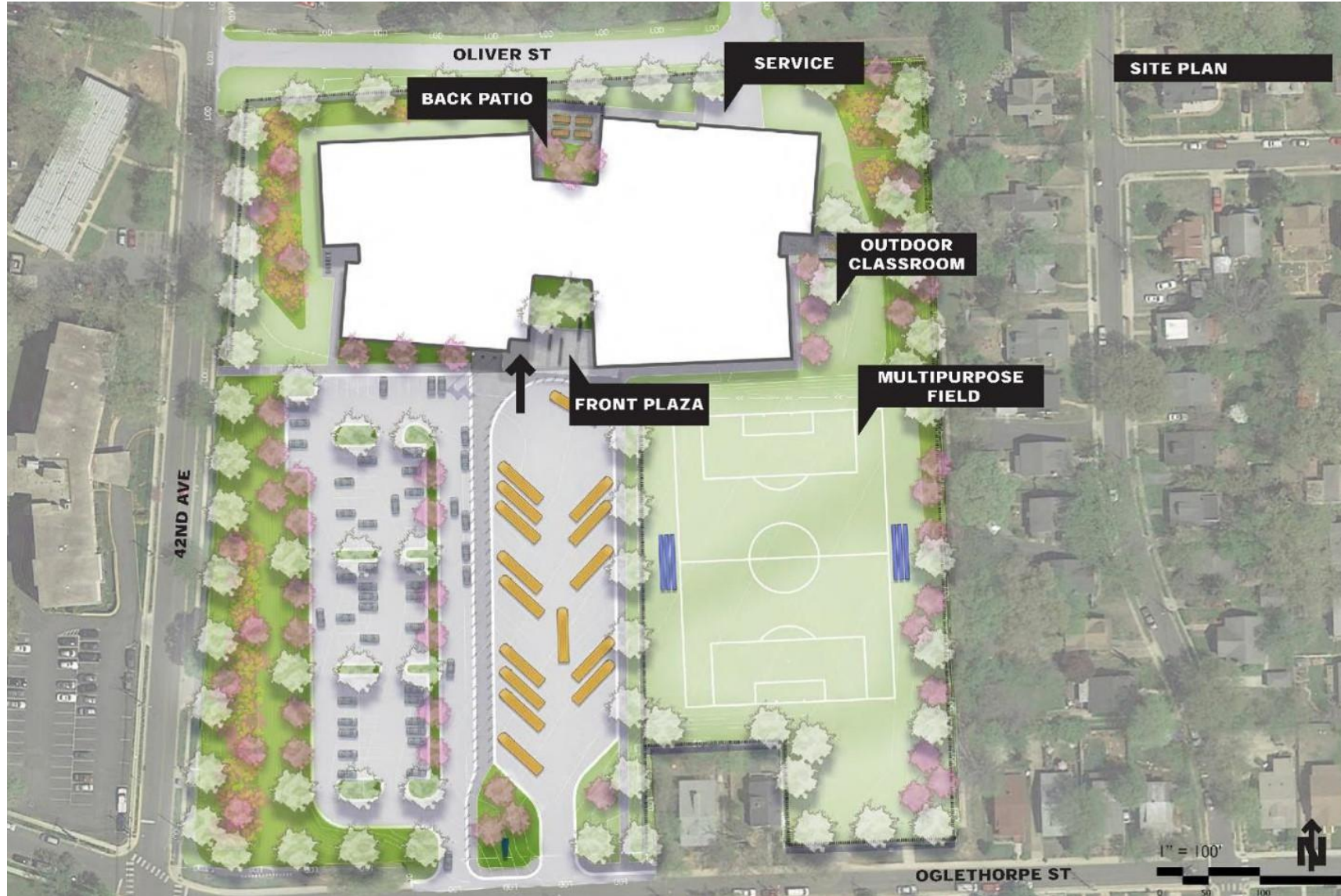


Construction Overview

| Major Completed Work | Work in Progress | Next Steps |
|--|--|---|
| Major equipment installed: RTU's, electrical switchgear and generators, boilers, HVAC chillers, and elevators. | Baffle ceiling installation, drywall close-ins, and interior wall finishing at learning stair connector and performance rooms. | Wood flooring installation in the gym to begin. |
| Interior walls completed, painting, and glass. | Kitchen equipment installation. | Installation of toilet partitions and accessories to begin. |
| Learning Stairs structure. | Controls programming and balancing. | Dropping of remaining ceiling tile in the classroom towers to be completed and installation of the ceiling grids in the performance rooms to begin. |
| Ceilings, lighting, and VCT and Ceramic tile flooring in academic areas. | Hard ceiling close-ins and tile installation at the locker rooms. | Mill and overlay on Oliver Street to begin. |
| Exterior storefront and entrance canopy. | Installation of low voltage devices and door hardware, Interior glazing, and setting casework in the classrooms. | Setting of exterior furnishing and landscaping and fencing at the west and north of the site to begin. |
| Baseball/Softball playing fields | Exterior accent color painting, dumpster enclosure CMU, and installation of entrance canopy soffit panels. | Monument sign installation and furniture installation in the classroom tower to begin. |
| Installation of gym equipment – scoreboard, basketball hoops. | Site light pole installation, turf field installation, and sidewalks at perimeter of building | PGCPS punch list for the classrooms on levels 2, 3, and 4 to begin. |



Construction Overview





Construction Overview



2nd Floor Corridor



2nd Floor Classroom



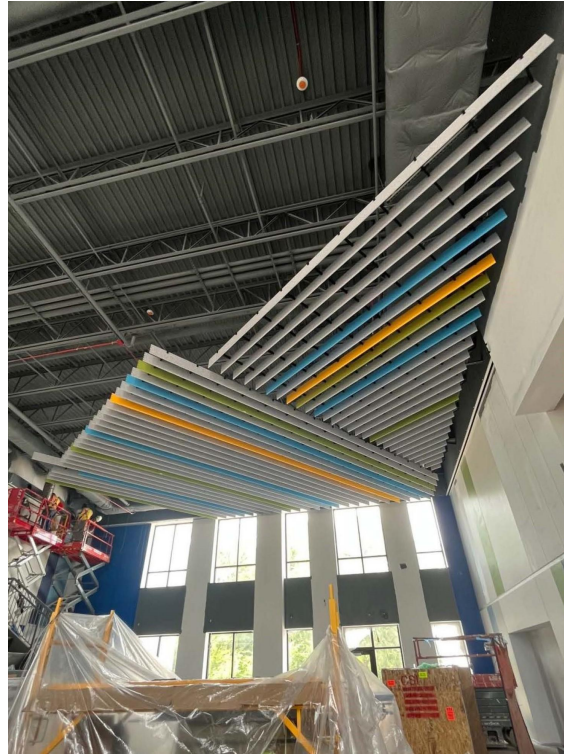
1st Floor Classroom



Construction Overview



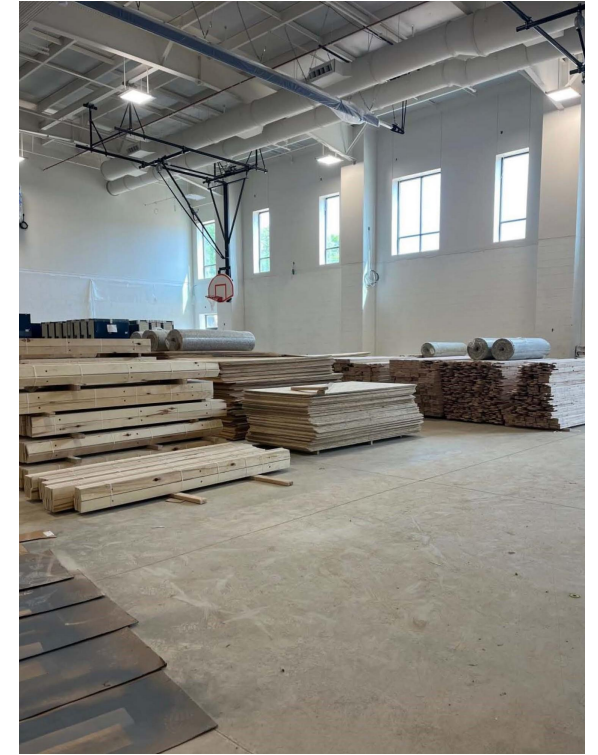
Media Center



Learning Stair Connector Baffles



Performance Rooms



Gymnasium



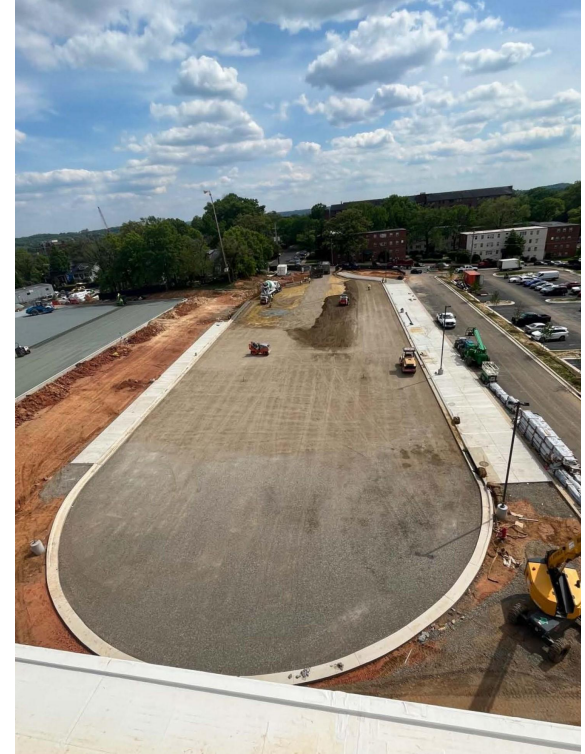
Construction Overview



Bioponds



Turf Field



Bus Loop



Construction Overview





Construction Overview





Operations Update

School Programming

- The bell schedule and uniform policy will remain the same.
- Additional programming decisions will be made and communicated by the school's principal closer to the beginning of the school year.

Muralist

- The muralist at Hyattsville Middle School will be Cita Sadeli. Ms. Sadeli, who also goes by the name MISSCHELOVE, is an art director, muralist, designer, and illustrator whose work includes major brands such as Apple and Adobe is known for her local and biographical storytelling approach.
- To learn more about Ms. Sadeli and view her work, visit her website at www.chelove.com.

Community Investment Project

- The selection of the community investment project will begin after the beginning of the school year. More information will be shared closer to that time.



- Please type your questions/comments in the Q&A area of Zoom.
- Questions and answers from this town hall will be posted on the Blueprint Schools page at bit.ly/PGCPSBlueprint.
- If you have additional questions, please send them through the Blueprint Schools Question Form at bit.ly/Blueprint-QA.





Thank You!

To submit additional questions and to view today's presentation, visit bit.ly/PGCPSBlueprint.