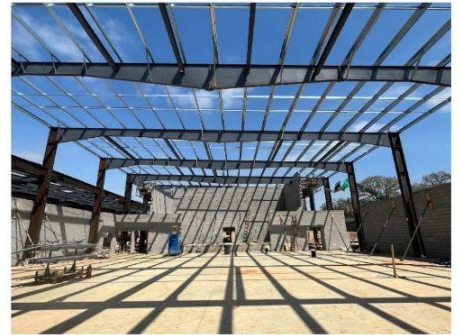




## Blueprint Schools Program Quarterly Report #6 June 2022



[www.pgcpsblueprintschools.com](http://www.pgcpsblueprintschools.com)



Angela D. Alsobrooks  
County Executive

# PGCPS Blueprint Schools

## Quarterly Report #6

### Table of Contents

**Executive Summary** | 3

**Project Profiles** | 4

**Program Progress** | 7

Construction Progress | 7

Construction Updates by Site | 7

**Community Impact** | 11

School Naming | 11

Mentor-Protégé Program | 12

Blueprint Schools Program Newsletter | 13

Blueprint Schools Program Website | 13

**Closing Statement** | 13

**Appendix** | 14

## EXECUTIVE SUMMARY

The Blueprint Schools Program (the “Program”) represents a new beginning in many ways for Prince George’s County Public Schools (“PGCPS”) and each of the impacted communities. One year ago, we were preparing for breaking ground at all six Blueprint Schools sites; acquiring requisite permits to begin demolition, rough and fine grading; mobilizing at the six Blueprint School sites; and finalizing schedules. The Program is well underway and on track to deliver six new public schools to communities across Prince George’s County.

Two of the schools are new construction and programs entirely: a middle school in Adelphi, Maryland and a K-8 Academy in Fort Washington, Maryland. In adherence to PGCPS Guidelines for Naming/Renaming Schools and Facilities ([Administrative Procedure 3500](#)), the Program developed a community-centered naming process for these two schools that involved the formation of naming committees, solicitation of community contacts, and an online voting process.


Prompts to vote on names for the Adelphi and Southern Area schools were made available in English and Spanish and distributed broadly across both towns. The Program estimates that, through our outreach process, voting prompts were sent out to over 14,000 email addresses. The top three recommendations for each school were forwarded to the Board of Education for final approval. (See page 11) On April, 28, 2022, the Board of Education officially named the schools Adelphi Middle School and Colin L. Powell K-8 Academy in alignment with the communities’ top votes. These two new schools will bring new history and tradition to Prince George’s County and the communities in which they exist.

The Program continues to provide opportunities for community members to engage in the Program. The Community Asset Program (CAP) will be led by and for each school community with support from Blueprint Schools and our program partner Prince George’s County Educational Partners (PGCECP). This program gives school communities the power to develop plans for the placement of an asset that reflects or serves their surrounding community. In addition to CAP, each school community will also get to weigh in on the design and placement of a mural in their new school.

Each school community will also have an opportunity to participate in the selection of artists to design a mural in their new school. Like the CAP, the mural project is part of the Program’s goal to represent Prince George’s County communities within Blueprint Schools facilities. The murals will be in place to encourage pride and celebration around each community’s identity, cultural vibrancy, and diversity. Furthermore, the murals will demonstrate the Program’s commitment to growth and inclusion, expression of culture, and efforts to create welcoming learning environments.

Jason Washington, Director  
*Office of Alternative Infrastructure Planning and Development*

## PROJECT PROFILES

Adelphi Middle School	
	
<p><b>Project Status:</b> Construction  <b>Neighborhood:</b> Adelphi  <b>Address:</b> 8820 Riggs Rd, Adelphi, MD 20783  <b>Grade Configuration:</b> 6-8  <b>Capacity:</b> 1,200  <b>Square Footage:</b> 144,800 sq. ft.  <b>Principal:</b> TBA</p>	<p><b>Area 2 Associate Superintendent:</b></p> <ul style="list-style-type: none"> <li>● Dr. David G. Curry, Jr.</li> </ul> <p><b>County Council Representative:</b></p> <ul style="list-style-type: none"> <li>● Vice-Chair Deni Taveras (District 2)</li> </ul> <p><b>State Legislative Representatives:</b></p> <ul style="list-style-type: none"> <li>● Senator Malcolm Augustine</li> <li>● Delegate Diana Fennell</li> <li>● Delegate Wanika Fisher</li> <li>● Delegate Julian Ivey</li> </ul> <p><b>School Board Representative:</b></p> <ul style="list-style-type: none"> <li>● Pamela Boozer-Strother (District 3)</li> </ul>

Drew-Freeman Middle School	
	
<p><b>Project Status:</b> Construction  <b>Neighborhood:</b> Suitland, Arnold Heights  <b>Address:</b> 2600 Brooks Dr, Hillcrest Heights, MD 20746  <b>Grade Configuration:</b> 6-8  <b>Capacity:</b> 1,200  <b>Square Footage:</b> 144,800 sq. ft.  <b>Principal:</b> Dallas Lee</p>	<p><b>Associate Superintendent:</b></p> <ul style="list-style-type: none"> <li>● Dr. David G. Curry, Jr.</li> </ul> <p><b>County Council Representative:</b></p> <ul style="list-style-type: none"> <li>● Rodney Streeter (District 7)</li> </ul> <p><b>State Legislative Representatives:</b></p> <ul style="list-style-type: none"> <li>● Senator Joanne Benson</li> <li>● Delegate Ereik Barron</li> <li>● Delegate Andrea Harrison</li> <li>● Delegate Jazz Lewis</li> </ul> <p><b>School Board Representative:</b></p> <ul style="list-style-type: none"> <li>● Kenneth Harris II (District 7)</li> </ul>

## PROJECT PROFILES *(continued)*



## Hyattsville Middle School



**Project Status:** Construction  
**Neighborhood:** Hyattsville, West Riverdale, University Park  
**Address:** 6001 42<sup>nd</sup> Ave., Hyattsville, MD 20781  
**Grade Configuration:** 6-8  
**Capacity:** 1,200  
**Square Footage:** 162,610 sq. ft.  
**Principal:** Chanita Stamper

**Associate Superintendent:**

- Dr. David G. Curry, Jr.

**County Council Representative:**

- Deni Taveras (District 2)

**State Legislative Representatives:**

- Senator Paul Pinsky
- Delegate Anne Healey
- Delegate Alonzo Washington
- Delegate Nicole Williams

**School Board Representative:**

- Pamela Boozer-Strother (District 3)

## Kenmoor Middle School



**Project Status:** Construction  
**Neighborhood:** Palmer Park, Kentland, Glenarden  
**Address:** 2501 Kenmoor Dr., Landover, MD 20785  
**Grade Configuration:** 6-8  
**Capacity:** 1,200  
**Square Footage:** 144,800 sq. ft.  
**Principal:** Maha Fadli

**Associate Superintendent:**

- Dr. David G. Curry, Jr.

**County Council Representative:**

- Jolene Ivey (District 5)

**State Legislative Representatives:**

- Senator Paul Pinsky
- Delegate Anne Healey
- Delegate Alonzo Washington
- Delegate Nicole Williams

**School Board Representative:**

- Shayla Adams-Stafford (District 4)

**PROJECT PROFILES** *(continued)*

**Colin L. Powell K-8 Academy**



**Project Status:** Construction  
**Neighborhood:** Tantallon,  
 Fort Washington  
**Address:** 12200 Fort Washington Rd.,  
 Fort Washington, MD 20744  
**Grade Configuration:** K-8  
**Capacity:** 2,000  
**Square Footage:** 233,865 sq. ft.  
**Principal:** TBD

**Associate Superintendents:**

- Dr. Kasandra G. Lassiter
- Dr. David G. Curry, Jr.

**County Council Representative:**

- Edward Burroughs (District 8)

**State Legislative Representatives:**

- Senator Obie Patterson
- Delegate Veronica Turner
- Delegate Kriselda Valderrama
- Delegate Jay Walker

**School Board Representative:**

- Sonya Williams (District 9)

**Walker Mill Middle School**



**Project Status:** Construction  
**Neighborhood:** Walker Mill  
**Address:** 800 Karen Blvd.,  
 Capital Heights, MD 20743  
**Grade Configuration:** 6-8  
**Capacity:** 1,200  
**Square Footage:** 144,800 sq. ft.  
**Principal:** Erin Cribbs

**Associate Superintendent:**

- Dr. David G. Curry, Jr.

**County Council Representative:**

- Derrick Davis (District 6)

**State Legislative Representatives:**

- Senator Melony Griffith
- Delegate Darryl Barnes
- Delegate Nick Charles
- Delegate Dereck Davis

**School Board Rep:**

- Belinda Queen (District 6)

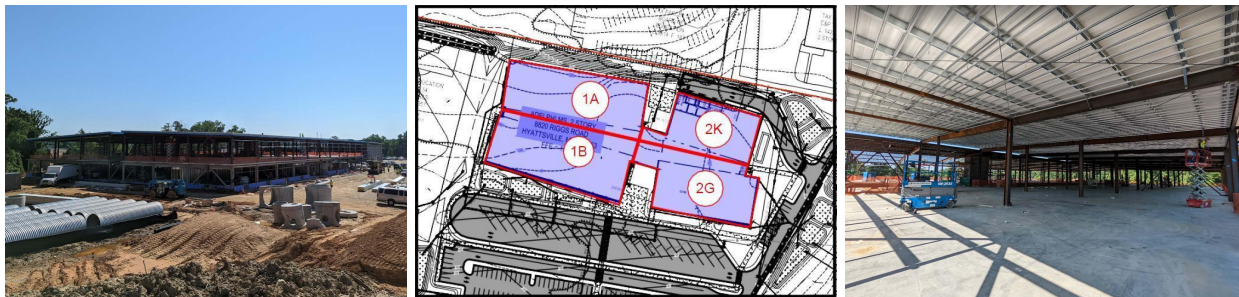
## PROGRAM PROGRESS

### *Construction Progress*

Construction activities continue at all six school sites. The Program has published ten issues of the Blueprint Schools News & Updates newsletter and continues to disseminate construction activity notices as needed throughout each impacted community. As construction reaches the completion of steel erection at all six sites, the Program will be hosting an official topping out ceremony at the Colin Powell K-8 Academy site on June 22nd.

### *Construction Updates by Site*

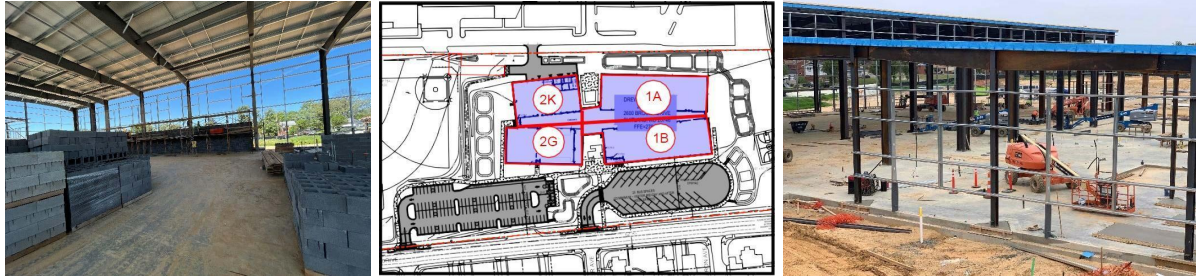
#### *Adelphi Area Middle School*



Activity	Progress	30-Day Look-Ahead
Structural steel erection	Completed	<ul style="list-style-type: none"> <li>• Installation of hat channel system in building sectors 1A, 1B, and 2K is ongoing.</li> <li>• Interior wall framing in building sectors 1B and 2K is ongoing.</li> <li>• MEP ceiling rough-in in building sector 1B is ongoing.</li> <li>• Installation of MEPF hangers in level 2 of building sectors 1A and 1B to be completed.</li> <li>• Interior CMU block walls in building sector 2G to be completed.</li> <li>• Exterior brick around the perimeter of the building to be completed.</li> <li>• Installation of exterior wall panels in building sector 2G to continue.</li> <li>• Installation of site storm utilities to continue.</li> </ul>
Elevated concrete deck pours	Completed	
Building perimeter exterior knee wall framing	Completed	
Interior CMU block elevator shaft walls	Completed	
Installation of roof panels in building sectors 1A and 1B	Completed	
Forming and pouring of concrete stage and ramp	Completed	

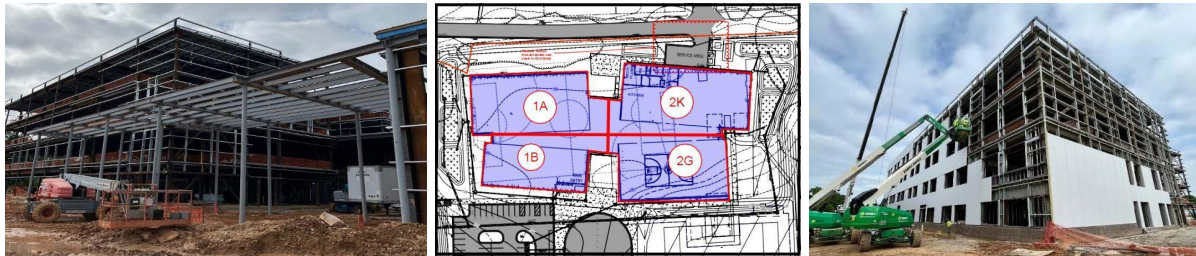


**Drew-Freeman Middle School**



Activity	Progress	30-Day Look-Ahead
Steel erection at building sectors 1B and 2K	Completed	<ul style="list-style-type: none"> <li>• Installation of MEPF in first floor and exterior brick in building sectors 1A and 1B is ongoing.</li> <li>• Installation of fireproofing in building sectors 2G and 2K is ongoing.</li> <li>• Installation of interior CMU block walls to continue.</li> <li>• Installation of roof panels in building sector 1B and 2K is ongoing.</li> </ul>
Installation of metal decking in all building sectors	Completed	
Installation of concrete slabs in building sector	Completed	
Installation of building perimeter knee wall in building sectors 1A, 1B and 2G	Completed	
All elevated concrete decks in building sector 1	Completed	

**Hyattsville Middle School**

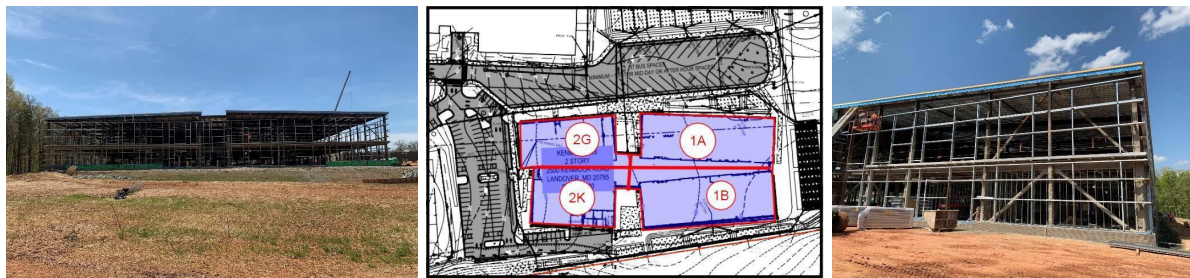


Activity	Progress	30-Day Look-Ahead
Primary steel erection at sectors 1B, 2G, and 2K	Completed	<ul style="list-style-type: none"> <li>• Exterior metal wall panel installation at building sector 2K to begin.</li> <li>• MEPF hanger installation at building sectors 1A and 1B is ongoing.</li> <li>• Installation of HVAC ductwork at building sector 1A (2nd and 3rd floors) to continue.</li> </ul>
Metal panel roof at building sectors 2K and 2G	Completed	



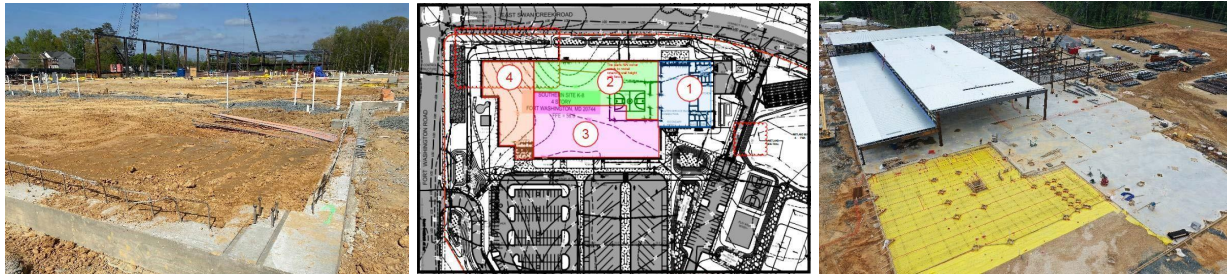
Secondary steel installation at building sector 1A	Completed	<ul style="list-style-type: none"> <li>• Installation of interior metal stairs (Stair 2) to begin.</li> <li>• Fireproofing at 1B sector to continue.</li> <li>• TPO roof installation to begin.</li> </ul>
Concrete slab on metal deck floors at sector 1B	Completed	
Underground telecom duct bank installation at west side of site	Completed	

***Kenmoor Middle School***



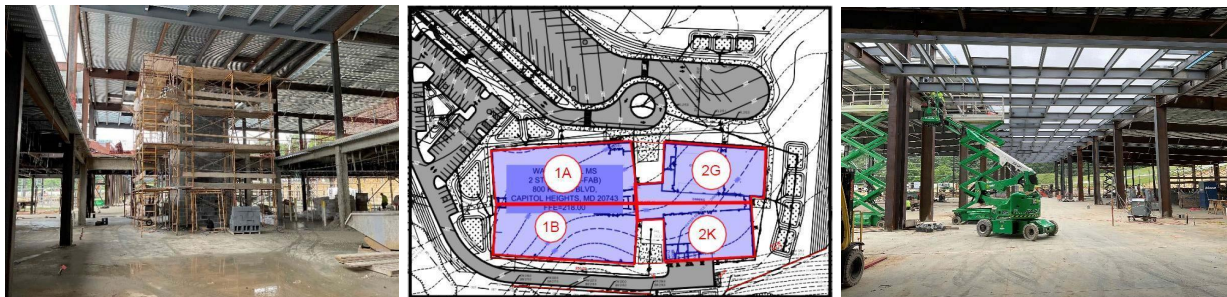
Activity	Progress	30-Day Look-Ahead
All elevated concrete deck pours	Completed	<ul style="list-style-type: none"> <li>• Installation of fireproofing lath system in building sectors 1A (level 2), 1B (level2), and 2K is ongoing.</li> <li>• Interior wall framing in building sectors 1A and 2K is ongoing.</li> <li>• MEP ceiling and wall rough-in in building sectors 1B (level 2) and 2K is ongoing.</li> <li>• Interior CMU block walls and installation of the roof panels in building sector 2G to be completed.</li> <li>• Installation of exterior wall panels in building sectors 1A, 1B, and 2K to continue.</li> <li>• Installation of site sanitary sewer utility to be completed.</li> </ul>
All primary and secondary steel	Completed	
Roof decking	Completed	
Brick masonry walls and backfill at the perimeter of the building	Completed	
Interior wall framing on level 1 of sectors 1A and 1B	Completed	

**Southern Area K-8**



Activity	Progress	30-Day Look-Ahead
Slab on grade at east area, main gym, north center area, and 4-story tower	Completed	<ul style="list-style-type: none"> <li>Interior CMU block wall construction to begin.</li> <li>TPO roofing installation at building sequence 1 to begin.</li> <li>Concrete slab on deck at 4-story tower to begin.</li> <li>Steel erection at 3-story tower to begin.</li> <li>Stabilization of playfields to be completed.</li> </ul>
Removal of surcharge dirt at SW end of the building pad and 3-story tower	Completed	
Steel erection at building sequences 1, 2, and 3	Completed	
Storm utility work along west side of building pad	Completed	
Concrete building foundations at west entrance area	Completed	

**Walker Mill**



Activity	Progress	30-Day Look-Ahead
Steel erection and detailing of steel in all building sectors	Completed	<ul style="list-style-type: none"> <li>Installation of roof panels at building sector 1A to be completed.</li> <li>Installation of roof panels at building sector 2G to be completed.</li> <li>Exterior brick walls and installation of ceiling metal lath in building sector 1B to begin.</li> <li>Exterior wall panels building sector 1B &amp; 1A to begin.</li> <li>Installation of CMU in building sector 2G to begin.</li> </ul>
Secondary steel erection in all building sectors	Completed	
Perimeter knee wall installation in building sectors 1B and 2K	Completed	
Installation of roof panels in building sectors 1B and 2K	Completed	

## COMMUNITY IMPACT

### School Naming Process

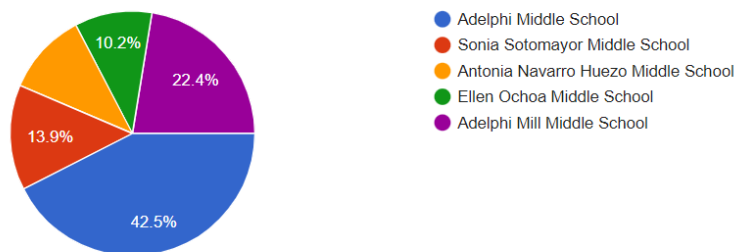
As part of the PGCPs Blueprint Schools Program, six new schools are being constructed in various areas of Prince George’s County, Maryland. Four of the six projects are modernizations to existing schools and two are new construction: a middle school in Adelphi, MD and a K-8 Academy in Fort Washington, Maryland. Adelphi and Fort Washington community members requested an opportunity to name the new public schools. In response, Blueprint Schools Program developed a community-centered naming process, in alignment with PGCPs Guidelines for Naming/Renaming Schools and Facilities ([Administrative Procedure 3500](#)), that involved the formation of naming committees, solicitation of community contacts, and an online voting process.

Voting prompts for the Adelphi and Southern Area schools were made available in English and Spanish and distributed through PGCPs Communications and Community Engagement Office’s SchoolMax portal (to feeder school communities), and neighborhood-based groups via naming committee members and school district/county representatives. Blueprint Schools Program estimates that, through this outreach process, voting prompts were sent out to over 14,000 email addresses.

### *Adelphi Area Middle School voting results at-a-glance:*

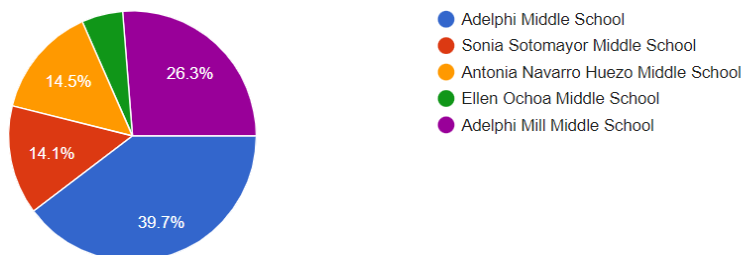
CAST YOUR VOTE:

459 responses



EMITA SU VOTO:

297 responses

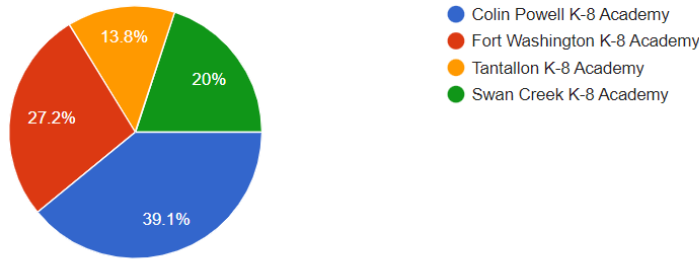




*Southern Area K-8 voting results at-a-glance:*

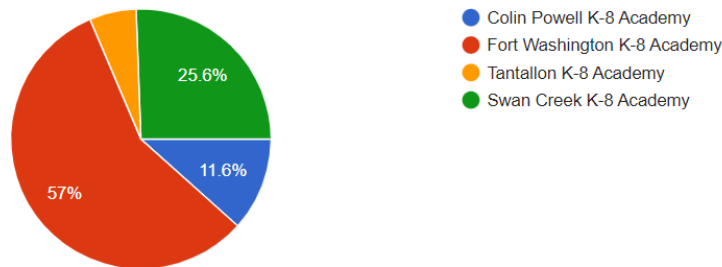
CAST YOUR VOTE:

942 responses



EMITA SU VOTO:

86 responses



The top three recommendations for each school were forwarded to the Board of Education for final approval. (See page 11) On April, 28, 2022, the Board of Education officially named the schools Adelphi Middle School and Colin L. Powell K-8 Academy in alignment with the communities' top votes.

***Mentor-Protégé Program***

The initial training sessions for the 2nd cohort of the Blueprint Schools Mentor Protégé Program, a partnership program of Prince George's County Education & Community Partners (PGCECP) and Prince George's County Public Schools (PGCPS), was completed on May 24, 2022. Sixteen firms participated in this Cohort, covering disciplines including Window Treatments, Low Voltage Electrical, Security Systems, Finished Carpentry, Material Supply, Furniture, Fixtures, and Equipment. Participation was particularly high for this cohort. As shared in the Blueprint Schools Program Quarterly Report #3, the program provides minority and county-based businesses access to financial, technical, and management training from Gilbane subject matter experts over eight two-hour weekly sessions. This program increases local businesses' exposure to the industry and opportunities to receive contracts or subcontracts.

Post-graduation, this cohort will move to the mentorship portion of the program. Firms with the ability to bond, finance, and contract on the Blueprint Schools project have been assigned Gilbane mentors and will start engaging in June. The second group will continue their journey in mentorship through monthly courses and coaching, which will help these protégés increase their competencies and capacity. The first installment of additional workshops for this cohort will be a workshop titled “Grow Your Business,” focusing on business development strategies that assists small firms in getting larger contracts. The Gilbane internal team of Michael Burke and Eben Smith will be the presenters for this session. The second session is titled “Virtual Bookkeeping, Establishing Your Back Office” with guest presenter Janelle Miley, Chief Executive Officer of GLOBAL Strategies, LLC. These sessions will begin on June 21, 2022.

### ***Blueprint Schools Program Newsletter***

The *Blueprint Schools News & Updates* newsletter continues to serve as a great resource to stakeholders for program updates, construction updates, and Community Investment Program highlights. To date, ten issues have been released to over 790 subscribers with an average open rate of 47.5%.

### ***Blueprint Schools Program Website***

The Program website continues to be an effective source of information and news for both internal and external stakeholders. It has received, over the last three months, 2,200+ visitors and 45,000 page views. The website contains a variety of information including project updates, procurement forecasts, outreach events, Steering Committee information, community meeting presentations, and links to Blueprint Schools News & Updates. School profile pages include FAQs, site maps, resources, downloads, and other project information.

## **CLOSING STATEMENT**

As we approach the midpoint of the Program’s second year, we are encouraged to see the great progress being made at the school construction sites, and remain committed to our goal of delivering six, dynamic schools on time in Summer 2023.

## APPENDIX